



Verification Report

Applicant : Shenzhen Huafurui Technology Co., Ltd.
Address : Unit 1401 & 1402, 14/F, Jinqi Zhigu Mansion (No. 4 Building of Chongwen Garden), Crossing of the Liuxian Street and Tangling Road, Taoyuan Street, Nanshan District, Shenzhen, 518055, P.R. China

Report on the submitted samples said to be:

Sample Name(s) : Smartphone
Trade Mark : CUBOT
Part No. : NOTE 50
Sample Received Date : May 15, 2023
Testing Period : May 15, 2023 ~ May 22, 2023
Date of Report : May 23, 2023
Testing Location : 901, No.40 Building, Xialang Industrial Zone, Heshuikou Community, Matian Street, Guangming District, Shenzhen, Guangdong, China
Results : Please refer to next page(s).

TEST REQUEST	CONCLUSION
As specified by client, based on the performed tests on submitted sample, the result of Lead(Pb), Cadmium(Cd), Mercury(Hg), Hexavalent Chromium(Cr(VI)), PBBs, PBDEs, Dibutyl Phthalate(DBP), Butylbenzyl Phthalate(BBP), Di-2-ethylhexyl Phthalate(DEHP) and Diisobutyl phthalate(DIBP) content comply with the limits set by RoHS Directive 2011/65/EU with amendment (EU) 2015/863.	PASS

Signed for and on behalf of LCS

Lily dan



**Results:****A. EU RoHS Directive 2011/65/EU and its amendment directives**

Test method: With reference to IEC 62321-1:2013&IEC 62321-2:2021&IEC 62321-3-1:2013, Screening by X-ray Fluorescence Spectroscopy (XRF)

Sample No.	Sample Description	Results						Date of sample submission/ Resubmission
		Cd	Pb	Hg	Cr [▼]	Br [▼]		
						PBBs	PBDEs	
1	Black plastic shell	BL	BL	BL	BL	BL	BL	2023-05-15
2	Black plastic adhesive	BL	BL	BL	BL	BL	BL	2023-05-15
3	Black glass	BL	BL	BL	BL	BL	BL	2023-05-15
4	Black plastic shell	BL	BL	BL	BL	BL	BL	2023-05-15
5	Grey plastic sheet	BL	BL	BL	BL	BL	BL	2023-05-15
6	Black metal sheet	BL	BL	BL	BL	/	/	2023-05-15
7	Silver metal sheet	BL	BL	BL	BL	/	/	2023-05-15
8	Silver metal sheet	BL	BL	BL	BL	/	/	2023-05-15
9	Black plastic sheet	BL	BL	BL	BL	BL	BL	2023-05-15
10	Gold metal sheet	BL	BL	BL	BL	/	/	2023-05-15
11	Black plastic sheet	BL	BL	BL	BL	BL	BL	2023-05-15
12	Gold metal screw	BL	BL	BL	BL	/	/	2023-05-15
13	Black foam	BL	BL	BL	BL	BL	BL	2023-05-15
14	Gold metal sheet	BL	BL	BL	BL	/	/	2023-05-15
15	Black plastic sheet	BL	BL	BL	BL	BL	BL	2023-05-15
16	Transparent plastic sheet	BL	BL	BL	BL	BL	BL	2023-05-15
17	White plastic sheet	BL	BL	BL	BL	BL	BL	2023-05-15
18	Black plastic cable	BL	BL	BL	BL	BL	BL	2023-05-15
19	Black plastic sheet	BL	BL	BL	BL	BL	BL	2023-05-15
20	Gold metal needle	BL	BL	BL	BL	/	/	2023-05-15
21	Red metal wire	BL	BL	BL	BL	/	/	2023-05-15
22	Transparent plastic sheet	BL	BL	BL	BL	BL	BL	2023-05-15
23	White plastic sheet	BL	BL	BL	BL	BL	BL	2023-05-15
24	Silver metal sheet	BL	BL	BL	BL	/	/	2023-05-15
25	Black plastic sheet	BL	BL	BL	BL	BL	BL	2023-05-15
26	Gold metal needle	BL	BL	BL	BL	/	/	2023-05-15
27	Magnet	BL	BL	BL	BL	/	/	2023-05-15
28	Silver metal sheet	BL	BL	BL	BL	/	/	2023-05-15
29	Yellow plastic cable	BL	BL	BL	BL	BL	BL	2023-05-15





Sample No.	Sample Description	Results						Date of sample submission/ Resubmission
		Cd	Pb	Hg	Cr [▼]	Br [▼]		
						PBBs	PBDEs	
30	Black foam	BL	BL	BL	BL	BL	BL	2023-05-15
31	Silver metal sheet	BL	BL	BL	BL	/	/	2023-05-15
32	Grey plastic dry adhesive	BL	BL	BL	BL	BL	BL	2023-05-15
33	Gold metal needle	BL	BL	BL	BL	/	/	2023-05-15
34	Black plastic sheet	BL	BL	BL	BL	BL	BL	2023-05-15
35	Black foam	BL	BL	BL	BL	BL	BL	2023-05-15
36	Silver metal sheet	BL	BL	BL	BL	/	/	2023-05-15
37	Yellow plastic cable	BL	BL	BL	BL	BL	BL	2023-05-15
38	Black foam	BL	BL	BL	BL	BL	BL	2023-05-15
39	Silver metal sheet	BL	BL	BL	BL	/	/	2023-05-15
40	Black plastic wire cover	BL	BL	BL	BL	BL	BL	2023-05-15
41	Silver metal wire	BL	BL	BL	BL	/	/	2023-05-15
42	White plastic wire	BL	BL	BL	BL	BL	BL	2023-05-15
43	Black soft plastic	BL	BL	BL	BL	BL	BL	2023-05-15
44	Black soft plastic	BL	BL	BL	BL	BL	BL	2023-05-15
45	Silver metal screw	BL	BL	BL	BL	/	/	2023-05-15
46	Black gold screw	BL	BL	BL	BL	/	/	2023-05-15
47	Black plastic sheet	BL	BL	BL	BL	BL	BL	2023-05-15
48	Grey plastic tape	BL	BL	BL	BL	BL	BL	2023-05-15
49	Red plastic wire cover	BL	BL	BL	BL	BL	BL	2023-05-15
50	Black plastic wire cover	BL	BL	BL	BL	BL	BL	2023-05-15
51	Silver metal wire	BL	BL	BL	BL	/	/	2023-05-15
52	Silver metal sheet	BL	BL	BL	BL	/	/	2023-05-15
53	Red metal wire	BL	BL	BL	BL	/	/	2023-05-15
54	Magnet	BL	BL	BL	BL	/	/	2023-05-15
55	Silver plastic sheet	BL	BL	BL	BL	BL	BL	2023-05-15
56	Black foam	BL	BL	BL	BL	BL	BL	2023-05-15
57	Transparent plastic sheet	BL	BL	BL	BL	BL	BL	2023-05-15
58	Grey foam	BL	BL	BL	BL	BL	BL	2023-05-15
59	Silver metal sheet	BL	BL	BL	BL	/	/	2023-05-15
60	Black plastic sheet	BL	BL	BL	BL	BL	BL	2023-05-15
61	Gold metal needle	BL	BL	BL	BL	/	/	2023-05-15
62	Black PCB board	BL	BL	BL	BL	BL	BL	2023-05-15



Shenzhen LCS Compliance Testing Laboratory Ltd.

Add: 901, No.40 Building, Xialang Industrial Zone, Heshuikou Community, Matian Street, Guangming District, Shenzhen, Guangdong, China

Tel: +(86) 0755-82591330 | E-mail: webmaster@lcs-cert.com | Web: www.lcs-cert.com

Scan code to check authenticity



Sample No.	Sample Description	Results						Date of sample submission/ Resubmission
		Cd	Pb	Hg	Cr [▼]	Br [▼]		
						PBBs	PBDEs	
63	Brown chip capacitor	BL	BL	BL	BL	BL	BL	2023-05-15
64	Black IC	BL	BL	BL	BL	BL	BL	2023-05-15
65	Black diode	BL	BL	BL	BL	BL	BL	2023-05-15
66	Black chip resistor	BL	BL	BL	BL	BL	BL	2023-05-15
67	Black IC	BL	BL	BL	BL	BL	BL	2023-05-15
68	Black plastic sheet	BL	BL	BL	BL	BL	BL	2023-05-15
69	Gold metal needle	BL	BL	BL	BL	/	/	2023-05-15
70	Tin solder	BL	BL	BL	BL	/	/	2023-05-15
71	Silver crystal oscillator	BL	BL	BL	BL	/	/	2023-05-15
72	Gold metal needle	BL	BL	BL	BL	/	/	2023-05-15
73	Black transistor	BL	BL	BL	BL	BL	BL	2023-05-15
74	Gold metal sheet	BL	BL	BL	BL	/	/	2023-05-15
75	Yellow tape	BL	BL	BL	BL	BL	BL	2023-05-15
76	Red plastic wire cover	BL	BL	BL	BL	BL	BL	2023-05-15
77	Blue plastic wire cover	BL	BL	BL	BL	BL	BL	2023-05-15
78	Silver metal wire	BL	BL	BL	BL	/	/	2023-05-15
79	Black foam	BL	BL	BL	BL	BL	BL	2023-05-15
80	Silver metal sheet	BL	BL	BL	BL	/	/	2023-05-15
81	Silver metal ring	BL	BL	BL	BL	/	/	2023-05-15
82	Grey foam	BL	BL	BL	BL	BL	BL	2023-05-15
83	Silver metal needle	BL	BL	BL	BL	/	/	2023-05-15
84	Silver metal sheet	BL	BL	BL	BL	/	/	2023-05-15
85	Golden thread	BL	BL	BL	BL	/	/	2023-05-15
86	Gold metal sheet	BL	BL	BL	BL	/	/	2023-05-15
87	Green PCB board	BL	BL	BL	BL	BL	BL	2023-05-15
88	Gold metal sheet	BL	BL	BL	BL	/	/	2023-05-15
89	Silver metal sheet	BL	BL	BL	BL	/	/	2023-05-15
90	Yellow plastic cable	BL	BL	BL	BL	BL	BL	2023-05-15
91	Silver metal sheet	BL	BL	BL	BL	/	/	2023-05-15
92	Transparent plastic sheet	BL	BL	BL	BL	BL	BL	2023-05-15
93	Black plastic cable	BL	BL	BL	BL	BL	BL	2023-05-15
94	Black foam	BL	BL	BL	BL	BL	BL	2023-05-15
95	Silver plastic foam	BL	BL	BL	BL	BL	BL	2023-05-15
96	Silver metal sheet	BL	BL	BL	BL	/	/	2023-05-15



Shenzhen LCS Compliance Testing Laboratory Ltd.

Add: 901, No.40 Building, Xialang Industrial Zone, Heshuikou Community, Matian Street, Guangming District, Shenzhen, Guangdong, China

Tel: +(86) 0755-82591330 | E-mail: webmaster@lcs-cert.com | Web: www.lcs-cert.com

Scan code to check authenticity



Sample No.	Sample Description	Results						Date of sample submission/ Resubmission
		Cd	Pb	Hg	Cr [▼]	Br [▼]		
						PBBs	PBDEs	
97	Silver metal ring	BL	BL	BL	BL	/	/	2023-05-15
98	Gold metal sheet	BL	BL	BL	BL	/	/	2023-05-15
99	Magnet	BL	BL	BL	BL	/	/	2023-05-15
100	Magnet	BL	BL	BL	BL	/	/	2023-05-15
101	Gold metal needle	BL	BL	BL	BL	/	/	2023-05-15
102	Black plastic sheet	BL	BL	BL	BL	BL	BL	2023-05-15
103	Gold wire	BL	BL	BL	BL	/	/	2023-05-15
104	Transparent plastic sheet	BL	BL	BL	BL	BL	BL	2023-05-15
105	Yellow plastic cable	BL	BL	BL	BL	BL	BL	2023-05-15
106	Silver metal sheet	BL	BL	BL	BL	/	/	2023-05-15
107	Black plastic sheet	BL	BL	BL	BL	BL	BL	2023-05-15
108	Transparent glass	BL	BL	BL	BL	BL	BL	2023-05-15
109	Blue glass	BL	BL	BL	BL	BL	BL	2023-05-15
110	Black chip capacitor	BL	BL	BL	BL	BL	BL	2023-05-15
111	Gold metal needle	BL	BL	BL	BL	/	/	2023-05-15
112	Black plastic sheet	BL	BL	BL	BL	BL	BL	2023-05-15
113	Black IC	BL	BL	BL	BL	BL	BL	2023-05-15
114	Yellow plastic sheet	BL	BL	BL	BL	BL	BL	2023-05-15
115	Black foam	BL	BL	BL	BL	BL	BL	2023-05-15
116	Yellow plastic cable	BL	BL	BL	BL	BL	BL	2023-05-15
117	Transparent glass	BL	BL	BL	BL	BL	BL	2023-05-15
118	Black plastic sheet	BL	BL	BL	BL	BL	BL	2023-05-15
119	Blue glass	BL	BL	BL	BL	BL	BL	2023-05-15
120	Gold metal needle	BL	BL	BL	BL	/	/	2023-05-15
121	Black plastic sheet	BL	BL	BL	BL	BL	BL	2023-05-15
122	Brown chip capacitor	BL	BL	BL	BL	BL	BL	2023-05-15
123	White plastic sheet	BL	BL	BL	BL	BL	BL	2023-05-15
124	Gold metal needle	BL	BL	BL	BL	/	/	2023-05-15
125	Black plastic sheet	BL	BL	BL	BL	BL	BL	2023-05-15
126	Yellow plastic cable	BL	BL	BL	BL	BL	BL	2023-05-15
127	Black foam	BL	BL	BL	BL	BL	BL	2023-05-15
128	Transparent glass	BL	BL	BL	BL	BL	BL	2023-05-15
129	Black chip capacitor	BL	BL	BL	BL	BL	BL	2023-05-15
130	Black chip resistor	BL	BL	BL	BL	BL	BL	2023-05-15
131	Yellow plastic cable	BL	BL	BL	BL	BL	BL	2023-05-15



Shenzhen LCS Compliance Testing Laboratory Ltd.

Add: 901, No.40 Building, Xialang Industrial Zone, Heshuikou Community, Matian Street, Guangming District, Shenzhen, Guangdong, China

Tel: +(86) 0755-82591330 | E-mail: webmaster@lcs-cert.com | Web: www.lcs-cert.com

Scan code to check authenticity



Sample No.	Sample Description	Results						Date of sample submission/ Resubmission
		Cd	Pb	Hg	Cr [▼]	Br [▼]		
						PBBs	PBDEs	
132	Brown chip capacitor	BL	BL	BL	BL	BL	BL	2023-05-15
133	Black IC	BL	BL	BL	BL	BL	BL	2023-05-15
134	Black plastic cable	BL	BL	BL	BL	BL	BL	2023-05-15
135	Silver metal needle	BL	BL	BL	BL	/	/	2023-05-15
136	Black plastic sheet	BL	BL	BL	BL	BL	BL	2023-05-15
137	Grey plastic gauze	BL	BL	BL	BL	BL	BL	2023-05-15
138	Gold metal sheet	BL	BL	BL	BL	/	/	2023-05-15
139	Green plastic cable	BL	BL	BL	BL	BL	BL	2023-05-15
140	White LED light	BL	BL	BL	BL	BL	BL	2023-05-15
141	White PCB board	BL	BL	BL	BL	BL	BL	2023-05-15
142	Black foam	BL	BL	BL	BL	BL	BL	2023-05-15
143	Transparent glass	BL	BL	BL	BL	BL	BL	2023-05-15
144	Black glass	BL	BL	BL	BL	BL	BL	2023-05-15
145	Black plastic sheet	BL	BL	BL	BL	BL	BL	2023-05-15
146	Silver plastic sheet	BL	BL	BL	BL	BL	BL	2023-05-15
147	Glass	BL	BL	BL	BL	BL	BL	2023-05-15
148	Grey foam	BL	BL	BL	BL	BL	BL	2023-05-15
149	Silver plastic sheet	BL	BL	BL	BL	BL	BL	2023-05-15
150	White plastic sheet	BL	BL	BL	BL	BL	BL	2023-05-15
151	Silver plastic sheet	BL	BL	BL	BL	BL	BL	2023-05-15
152	White plastic sheet	BL	BL	BL	BL	BL	BL	2023-05-15
153	Silver plastic sheet	BL	BL	BL	BL	BL	BL	2023-05-15
154	Transparent plastic sheet	BL	BL	BL	BL	BL	BL	2023-05-15
155	Silver plastic sheet	BL	BL	BL	BL	BL	BL	2023-05-15
156	Black plastic sheet	BL	BL	BL	BL	BL	BL	2023-05-15
157	Transparent plastic adhesive	BL	BL	BL	BL	BL	BL	2023-05-15
158	Grey gold plate	BL	BL	BL	BL	/	/	2023-05-15
159	Silver metal sheet	BL	BL	BL	BL	/	/	2023-05-15
160	Black IC	BL	BL	BL	BL	BL	BL	2023-05-15
161	Black PCB board	BL	BL	BL	BL	BL	BL	2023-05-15
162	Silver metal sheet	BL	BL	BL	BL	/	/	2023-05-15
163	Tin solder	BL	BL	BL	BL	/	/	2023-05-15
164	Black IC	BL	BL	BL	BL	BL	BL	2023-05-15
165	Brown chip capacitor	BL	BL	BL	BL	BL	BL	2023-05-15
166	Silver metal sheet	BL	BL	BL	BL	/	/	2023-05-15



Shenzhen LCS Compliance Testing Laboratory Ltd.

Add: 901, No.40 Building, Xialang Industrial Zone, Heshuikou Community, Matian Street, Guangming District, Shenzhen, Guangdong, China

Tel: +(86) 0755-82591330 | E-mail: webmaster@lcs-cert.com | Web: www.lcs-cert.com

Scan code to check authenticity



Sample No.	Sample Description	Results						Date of sample submission/ Resubmission
		Cd	Pb	Hg	Cr [▼]	Br [▼]		
						PBBs	PBDEs	
167	Black IC	BL	BL	BL	BL	BL	BL	2023-05-15
168	Black IC	BL	BL	BL	BL	BL	BL	2023-05-15
169	Black IC	BL	BL	BL	BL	BL	BL	2023-05-15
170	Yellow plastic label sheet	BL	BL	BL	BL	BL	BL	2023-05-15
171	White plastic sheet	BL	BL	BL	BL	BL	BL	2023-05-15
172	Silver metal sheet	BL	BL	BL	BL	/	/	2023-05-15
173	White plastic sheet	BL	BL	BL	BL	BL	BL	2023-05-15
174	White plastic sheet	BL	BL	BL	BL	BL	BL	2023-05-15
175	Silver metal needle	BL	BL	BL	BL	/	/	2023-05-15
176	White plastic wire cover	BL	BL	BL	BL	BL	BL	2023-05-15
177	Pink plastic wire cover	BL	BL	BL	BL	BL	BL	2023-05-15
178	Black plastic wire cover	BL	BL	BL	BL	BL	BL	2023-05-15
179	White plastic wire cover	BL	BL	BL	BL	BL	BL	2023-05-15
180	Green plastic wire cover	BL	BL	BL	BL	BL	BL	2023-05-15
181	Gold wire	BL	BL	BL	BL	/	/	2023-05-15
182	White soft plastic	BL	BL	BL	BL	BL	BL	2023-05-15
183	Silver metal sheet	BL	BL	BL	BL	/	/	2023-05-15
184	Transparent plastic sheet	BL	BL	BL	BL	BL	BL	2023-05-15
185	White plastic sheet	BL	BL	BL	BL	BL	BL	2023-05-15
186	Silver metal sheet	BL	BL	BL	BL	/	/	2023-05-15
187	Grey plastic sheet	BL	BL	BL	BL	BL	BL	2023-05-15
188	Silver metal needle	BL	BL	BL	BL	/	/	2023-05-15
189	Blue PCB board	BL	BL	BL	BL	BL	BL	2023-05-15
190	Tin solder	BL	BL	BL	BL	/	/	2023-05-15
191	White plastic sheet	BL	BL	BL	BL	BL	BL	2023-05-15
192	Silver metal sheet	BL	BL	BL	BL	/	/	2023-05-15
193	Silver metal needle	BL	BL	BL	BL	/	/	2023-05-15
194	Grey plastic sheet	BL	BL	BL	BL	BL	BL	2023-05-15
195	White plastic wire cover	BL	BL	BL	BL	BL	BL	2023-05-15
196	White soft plastic	BL	BL	BL	BL	BL	BL	2023-05-15
197	White soft plastic	BL	BL	BL	BL	BL	BL	2023-05-15
198	White plastic sheet	BL	BL	BL	BL	BL	BL	2023-05-15



Shenzhen LCS Compliance Testing Laboratory Ltd.

Add: 901, No.40 Building, Xialang Industrial Zone, Heshuikou Community, Matian Street, Guangming District, Shenzhen, Guangdong, China

Tel: +(86) 0755-82591330 | E-mail: webmaster@lcs-cert.com | Web: www.lcs-cert.com

Scan code to check authenticity



Sample No.	Sample Description	Results						Date of sample submission/ Resubmission
		Cd	Pb	Hg	Cr▼	Br▼		
						PBBs	PBDEs	
199	White plastic sheet	BL	BL	BL	BL	BL	BL	2023-05-15
200	Black plastic mesh	BL	BL	BL	BL	BL	BL	2023-05-15
201	Tin solder	BL	BL	BL	BL	/	/	2023-05-15
202	Green PCB board	BL	BL	BL	BL	BL	BL	2023-05-15

Note:

- Results were obtained by XRF for primary screening, and further chemical testing by ICP(for Cd, Pb, Hg), UV-Vis(for Cr(VI)) and GC-MS(for PBBs, PBDEs) are recommended to be performed, if the concentration exceeds the below warning value according to IEC 62321-3-1:2013(Unit: mg/kg).

Element	Polymers	Metals	Composite material
Cd	$BL \leq (70-3\sigma) < X < (130+3\sigma) \leq OL$	$BL \leq (70-3\sigma) < X < (130+3\sigma) \leq OL$	$LOD < X < (150+3\sigma) \leq OL$
Pb	$BL \leq (700-3\sigma) < X < (1300+3\sigma) \leq OL$	$BL \leq (700-3\sigma) < X < (1300+3\sigma) \leq OL$	$BL \leq (500-3\sigma) < X < (1500+3\sigma) \leq OL$
Hg	$BL \leq (700-3\sigma) < X < (1300+3\sigma) \leq OL$	$BL \leq (700-3\sigma) < X < (1300+3\sigma) \leq OL$	$BL \leq (500-3\sigma) < X < (1500+3\sigma) \leq OL$
Cr	$BL \leq (700-3\sigma) < X$	$BL \leq (700-3\sigma) < X$	$BL \leq (500-3\sigma) < X$
Br	$BL \leq (300-3\sigma) < X$	N/A	$BL \leq (250-3\sigma) < X$

Remark:

- BL= Below Limit
 - OL= Over Limit
 - X= The range of needing to do further testing
 - 3σ= The reproducibility of analytical instruments
 - N/A= Not applicable
 - LOD= Detection limit
- The XRF screening test for RoHS elements – The reading may be different to the actual content in the sample be of non-uniformity composition.
 - The maximum permissible limit is quoted from the document RoHS Directive 2011/65/EU with amendment (EU) 2015/863.
 - ▼=For restricted substances PBBs and PBDEs, the results show the total Br content, the restricted substance was Cr(VI), and the results showed the total Cr content.





RoHS Restricted Substances	Maximum Concentration Value (mg/kg) (by weight in homogenous materials)
Cadmium(Cd)	100
Lead(Pb)	1000
Mercury(Hg)	1000
Hexavalent Chromium(Cr(VI))	1000
Polybrominated biphenyls(PBBs)	1000
Polybrominated diphenylethers(PBDEs)	1000
Dibutyl Phthalate(DBP)	1000
Butylbenzyl Phthalate(BBP)	1000
Di-(2-ethylhexyl) Phthalate(DEHP)	1000
Diisobutyl phthalate(DIBP)	1000

Disclaimers:

This XRF Screening report is for reference purposes only. The applicant shall make its/his/her own judgment as to whether the information provided in this XRF screening report is sufficient for its/his/her purposes. The result shown in this XRF screening report will differ based on various factors, including but not limited to, the sample size, thickness, area, surface flatness, equipment parameters and matrix effect (e.g. plastic, rubber, metal, glass, ceramic etc.). Further wet chemical pre-treatment with relevant chemical equipment analysis are required to obtain quantitative data.





B. EU RoHS Directive 2011/65/EU with amendment (EU) 2015/863 on Lead(Pb), Cadmium(Cd), Mercury(Hg), Hexavalent Chromium(Cr(VI)), PBBs, PBDEs, DBP, BBP, DEHP & DIBP content

Test method:

Lead(Pb) & Cadmium(Cd) Content:

With reference to IEC 62321-5:2013, by acid digestion and analysis was performed by inductively coupled plasma optical emission spectrometer (ICP-OES) or atomic absorption spectrometer (AAS).

Mercury(Hg) Content:

With reference to IEC 62321-4:2013+AMD1:2017 CSV, by acid digestion and analysis was performed by inductively coupled plasma optical emission spectrometer (ICP-OES).

Hexavalent Chromium(Cr(VI)) Content:

With reference to IEC 62321-7-1:2015 or IEC 62321-7-2:2017, analysis was performed by UV-visible spectrophotometer (UV-Vis).

PBBs & PBDEs Content:

With reference to IEC 62321-6:2015, by solvent extraction and analysis was performed by gas chromatographic-mass spectrometer (GC-MS).

Phthalates(DBP, BBP, DEHP & DIBP) Content:

With reference to IEC 62321-8:2017, by solvent extraction and analysis was performed by gas chromatographic-mass spectrometer (GC-MS).

1) The test results of Phthalates(DBP, BBP, DEHP & DIBP)

Tested Items	MDL (mg/kg)	Results (mg/kg)				Limit (mg/kg)
		4	5	9	13	
Dibutyl Phthalate(DBP) Content	50	N.D.	N.D.	N.D.	N.D.	1000
Butylbenzyl Phthalate(BBP) Content	50	N.D.	N.D.	N.D.	N.D.	1000
Di-(2-ethylhexyl) Phthalate(DEHP) Content	50	N.D.	N.D.	N.D.	N.D.	1000
Diisobutyl phthalate(DIBP) Content	50	N.D.	N.D.	N.D.	N.D.	1000

Tested Items	MDL (mg/kg)	Results (mg/kg)				Limit (mg/kg)
		17	18	29	37	
Dibutyl Phthalate(DBP) Content	50	N.D.	N.D.	N.D.	N.D.	1000
Butylbenzyl Phthalate(BBP) Content	50	N.D.	N.D.	N.D.	N.D.	1000
Di-(2-ethylhexyl) Phthalate(DEHP) Content	50	N.D.	N.D.	N.D.	N.D.	1000
Diisobutyl phthalate(DIBP) Content	50	N.D.	N.D.	N.D.	N.D.	1000





Tested Items	MDL (mg/kg)	Results (mg/kg)				Limit (mg/kg)
		47	144	152	153	
Dibutyl Phthalate(DBP) Content	50	N.D.	N.D.	N.D.	N.D.	1000
Butylbenzyl Phthalate(BBP) Content	50	N.D.	N.D.	N.D.	N.D.	1000
Di-(2-ethylhexyl) Phthalate(DEHP) Content	50	N.D.	N.D.	N.D.	N.D.	1000
Diisobutyl phthalate(DIBP) Content	50	N.D.	N.D.	N.D.	N.D.	1000

Tested Items	MDL (mg/kg)	Results (mg/kg)				Limit (mg/kg)
		154	155	195	199	
Dibutyl Phthalate(DBP) Content	50	N.D.	N.D.	N.D.	N.D.	1000
Butylbenzyl Phthalate(BBP) Content	50	N.D.	N.D.	N.D.	N.D.	1000
Di-(2-ethylhexyl) Phthalate(DEHP) Content	50	N.D.	N.D.	N.D.	N.D.	1000
Diisobutyl phthalate(DIBP) Content	50	N.D.	N.D.	N.D.	N.D.	1000

Tested Items	MDL (mg/kg)	Results (mg/kg)	Limit (mg/kg)
		1+2+3+11+15+16	
Dibutyl Phthalate(DBP) Content	50	N.D.	1000
Butylbenzyl Phthalate(BBP) Content	50	N.D.	1000
Di-(2-ethylhexyl) Phthalate(DEHP) Content	50	N.D.	1000
Diisobutyl phthalate(DIBP) Content	50	N.D.	1000

Tested Items	MDL (mg/kg)	Results (mg/kg)	Limit (mg/kg)
		19+22+23+25+30+32	
Dibutyl Phthalate(DBP) Content	50	N.D.	1000
Butylbenzyl Phthalate(BBP) Content	50	N.D.	1000
Di-(2-ethylhexyl) Phthalate(DEHP) Content	50	N.D.	1000
Diisobutyl phthalate(DIBP) Content	50	N.D.	1000





Tested Items	MDL (mg/kg)	Results (mg/kg)	Limit (mg/kg)
		34+35+38+40+42+43	
Dibutyl Phthalate(DBP) Content	50	N.D.	1000
Butylbenzyl Phthalate(BBP) Content	50	N.D.	1000
Di-(2-ethylhexyl) Phthalate(DEHP) Content	50	N.D.	1000
Diisobutyl phthalate(DIBP) Content	50	N.D.	1000

Tested Items	MDL (mg/kg)	Results (mg/kg)	Limit (mg/kg)
		44+48+49+50+55+56	
Dibutyl Phthalate(DBP) Content	50	N.D.	1000
Butylbenzyl Phthalate(BBP) Content	50	N.D.	1000
Di-(2-ethylhexyl) Phthalate(DEHP) Content	50	N.D.	1000
Diisobutyl phthalate(DIBP) Content	50	N.D.	1000

Tested Items	MDL (mg/kg)	Results (mg/kg)	Limit (mg/kg)
		57+58+60+62+63+64	
Dibutyl Phthalate(DBP) Content	50	N.D.	1000
Butylbenzyl Phthalate(BBP) Content	50	N.D.	1000
Di-(2-ethylhexyl) Phthalate(DEHP) Content	50	N.D.	1000
Diisobutyl phthalate(DIBP) Content	50	N.D.	1000

Tested Items	MDL (mg/kg)	Results (mg/kg)	Limit (mg/kg)
		65+66+67+68+73+75	
Dibutyl Phthalate(DBP) Content	50	N.D.	1000
Butylbenzyl Phthalate(BBP) Content	50	N.D.	1000
Di-(2-ethylhexyl) Phthalate(DEHP) Content	50	N.D.	1000
Diisobutyl phthalate(DIBP) Content	50	N.D.	1000





Tested Items	MDL (mg/kg)	Results (mg/kg)	Limit (mg/kg)
		76+77+79+82+87+90	
Dibutyl Phthalate(DBP) Content	50	N.D.	1000
Butylbenzyl Phthalate(BBP) Content	50	N.D.	1000
Di-(2-ethylhexyl) Phthalate(DEHP) Content	50	N.D.	1000
Diisobutyl phthalate(DIBP) Content	50	N.D.	1000

Tested Items	MDL (mg/kg)	Results (mg/kg)	Limit (mg/kg)
		92+93+94+95+102+104	
Dibutyl Phthalate(DBP) Content	50	N.D.	1000
Butylbenzyl Phthalate(BBP) Content	50	N.D.	1000
Di-(2-ethylhexyl) Phthalate(DEHP) Content	50	N.D.	1000
Diisobutyl phthalate(DIBP) Content	50	N.D.	1000

Tested Items	MDL (mg/kg)	Results (mg/kg)	Limit (mg/kg)
		105+107+108+109+110+112	
Dibutyl Phthalate(DBP) Content	50	N.D.	1000
Butylbenzyl Phthalate(BBP) Content	50	N.D.	1000
Di-(2-ethylhexyl) Phthalate(DEHP) Content	50	N.D.	1000
Diisobutyl phthalate(DIBP) Content	50	N.D.	1000

Tested Items	MDL (mg/kg)	Results (mg/kg)	Limit (mg/kg)
		113+114+115+116+117+118	
Dibutyl Phthalate(DBP) Content	50	N.D.	1000
Butylbenzyl Phthalate(BBP) Content	50	N.D.	1000
Di-(2-ethylhexyl) Phthalate(DEHP) Content	50	N.D.	1000
Diisobutyl phthalate(DIBP) Content	50	N.D.	1000





Tested Items	MDL (mg/kg)	Results (mg/kg)	Limit (mg/kg)
		119+121+122+123+125+126	
Dibutyl Phthalate(DBP) Content	50	N.D.	1000
Butylbenzyl Phthalate(BBP) Content	50	N.D.	1000
Di-(2-ethylhexyl) Phthalate(DEHP) Content	50	N.D.	1000
Diisobutyl phthalate(DIBP) Content	50	N.D.	1000

Tested Items	MDL (mg/kg)	Results (mg/kg)	Limit (mg/kg)
		127+128+129+130+131+132	
Dibutyl Phthalate(DBP) Content	50	N.D.	1000
Butylbenzyl Phthalate(BBP) Content	50	N.D.	1000
Di-(2-ethylhexyl) Phthalate(DEHP) Content	50	N.D.	1000
Diisobutyl phthalate(DIBP) Content	50	N.D.	1000

Tested Items	MDL (mg/kg)	Results (mg/kg)	Limit (mg/kg)
		133+134+136+137+139+140	
Dibutyl Phthalate(DBP) Content	50	N.D.	1000
Butylbenzyl Phthalate(BBP) Content	50	N.D.	1000
Di-(2-ethylhexyl) Phthalate(DEHP) Content	50	N.D.	1000
Diisobutyl phthalate(DIBP) Content	50	N.D.	1000

Tested Items	MDL (mg/kg)	Results (mg/kg)	Limit (mg/kg)
		141+142+143+145+146+147	
Dibutyl Phthalate(DBP) Content	50	N.D.	1000
Butylbenzyl Phthalate(BBP) Content	50	N.D.	1000
Di-(2-ethylhexyl) Phthalate(DEHP) Content	50	N.D.	1000
Diisobutyl phthalate(DIBP) Content	50	N.D.	1000





Tested Items	MDL (mg/kg)	Results (mg/kg)	Limit (mg/kg)
		148+149+150+151+156+157	
Dibutyl Phthalate(DBP) Content	50	N.D.	1000
Butylbenzyl Phthalate(BBP) Content	50	N.D.	1000
Di-(2-ethylhexyl) Phthalate(DEHP) Content	50	N.D.	1000
Diisobutyl phthalate(DIBP) Content	50	N.D.	1000

Tested Items	MDL (mg/kg)	Results (mg/kg)	Limit (mg/kg)
		160+161+164+165+167+168	
Dibutyl Phthalate(DBP) Content	50	N.D.	1000
Butylbenzyl Phthalate(BBP) Content	50	N.D.	1000
Di-(2-ethylhexyl) Phthalate(DEHP) Content	50	N.D.	1000
Diisobutyl phthalate(DIBP) Content	50	N.D.	1000

Tested Items	MDL (mg/kg)	Results (mg/kg)	Limit (mg/kg)
		169+170+171+173+174+182	
Dibutyl Phthalate(DBP) Content	50	N.D.	1000
Butylbenzyl Phthalate(BBP) Content	50	N.D.	1000
Di-(2-ethylhexyl) Phthalate(DEHP) Content	50	N.D.	1000
Diisobutyl phthalate(DIBP) Content	50	N.D.	1000

Tested Items	MDL (mg/kg)	Results (mg/kg)	Limit (mg/kg)
		184+185+187+189+191+194	
Dibutyl Phthalate(DBP) Content	50	N.D.	1000
Butylbenzyl Phthalate(BBP) Content	50	N.D.	1000
Di-(2-ethylhexyl) Phthalate(DEHP) Content	50	N.D.	1000
Diisobutyl phthalate(DIBP) Content	50	N.D.	1000





Tested Items	MDL (mg/kg)	Results (mg/kg)				Limit (mg/kg)
		176	177	178	179	
Dibutyl Phthalate(DBP) Content	50	N.D.	N.D.	N.D.	N.D.	1000
Butylbenzyl Phthalate(BBP) Content	50	N.D.	N.D.	N.D.	N.D.	1000
Di-(2-ethylhexyl) Phthalate(DEHP) Content	50	N.D.	N.D.	N.D.	N.D.	1000
Diisobutyl phthalate(DIBP) Content	50	N.D.	N.D.	N.D.	N.D.	1000

Tested Items	MDL (mg/kg)	Results (mg/kg)	Limit (mg/kg)
		180	
Dibutyl Phthalate(DBP) Content	50	N.D.	1000
Butylbenzyl Phthalate(BBP) Content	50	N.D.	1000
Di-(2-ethylhexyl) Phthalate(DEHP) Content	50	N.D.	1000
Diisobutyl phthalate(DIBP) Content	50	N.D.	1000

Tested Items	MDL (mg/kg)	Results (mg/kg)	Limit (mg/kg)
		196+197+198+200+202	
Dibutyl Phthalate(DBP) Content	50	N.D.	1000
Butylbenzyl Phthalate(BBP) Content	50	N.D.	1000
Di-(2-ethylhexyl) Phthalate(DEHP) Content	50	N.D.	1000
Diisobutyl phthalate(DIBP) Content	50	N.D.	1000

Note:

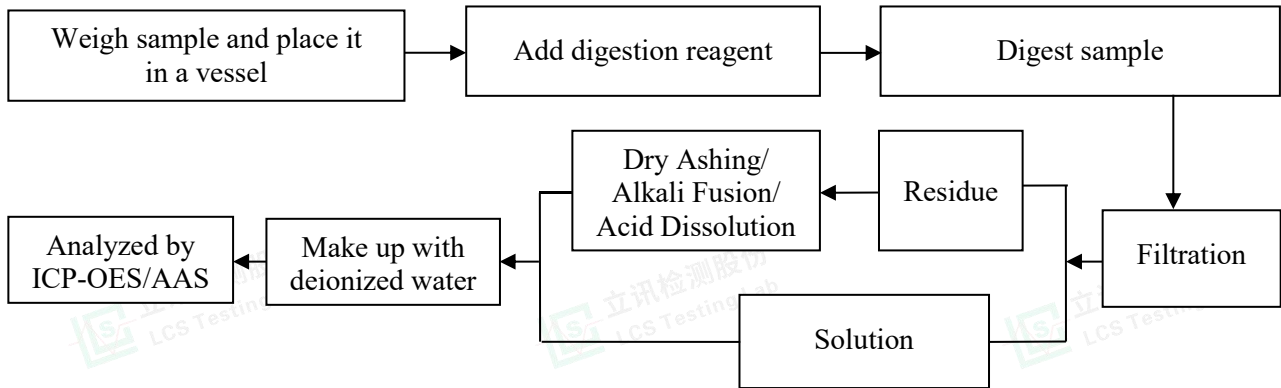
- MDL = Method Detection Limit
- N.D. = Not Detected (<MDL)
- mg/kg = milligrams per kilogram
- According to customer's requirement, only the appointed materials have been tested.



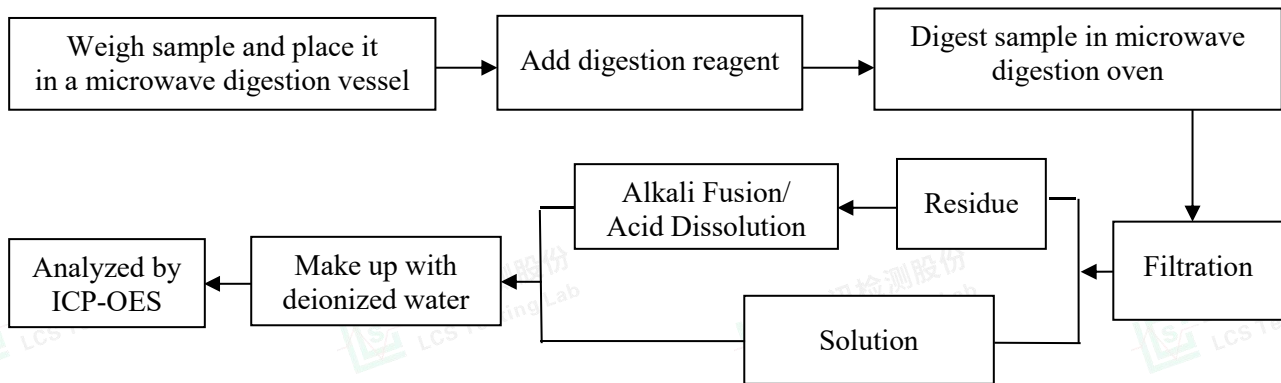


Test Process

1. Lead(Pb) & Cadmium(Cd): IEC 62321-5:2013

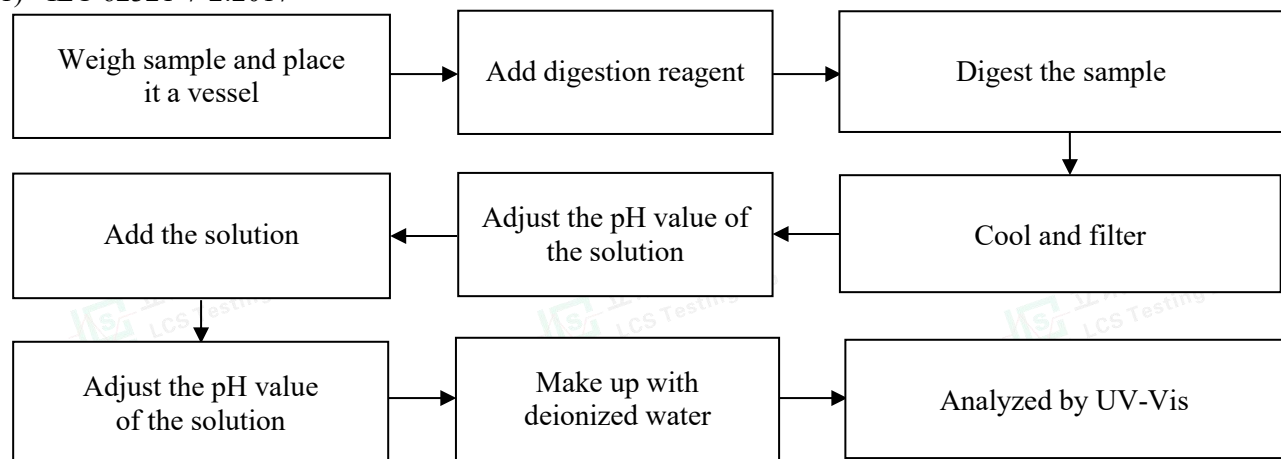


2. Mercury(Hg): IEC 62321-4:2013+AMD1:2017 CSV



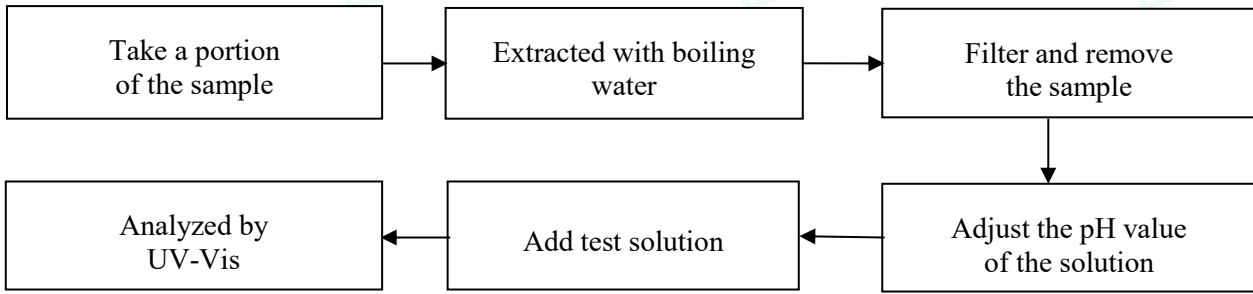
3. Hexavalent Chromium(Cr(VI))

1) IEC 62321-7-2:2017

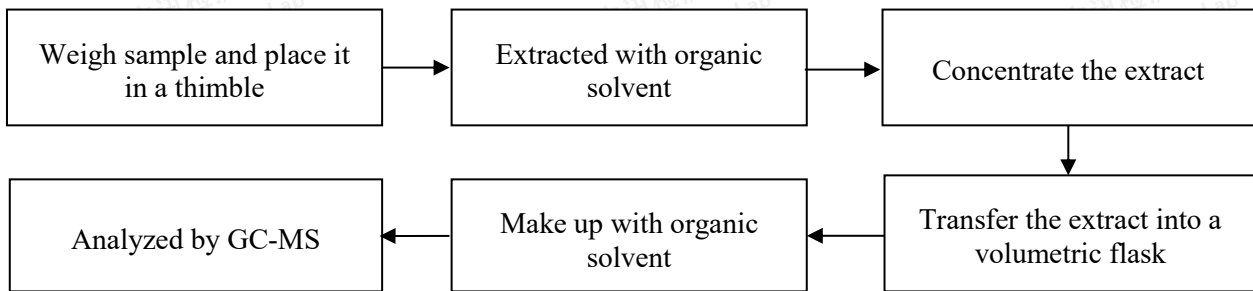




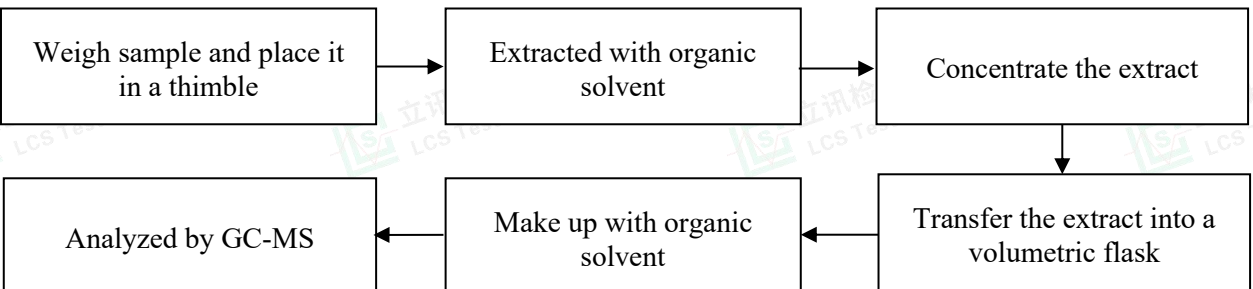
2) IEC 62321-7-1:2015



4. Polybrominated Biphenyls(PBBs) & Polybrominated Diphenyl Ethers(PBDEs) : IEC 62321-6:2015



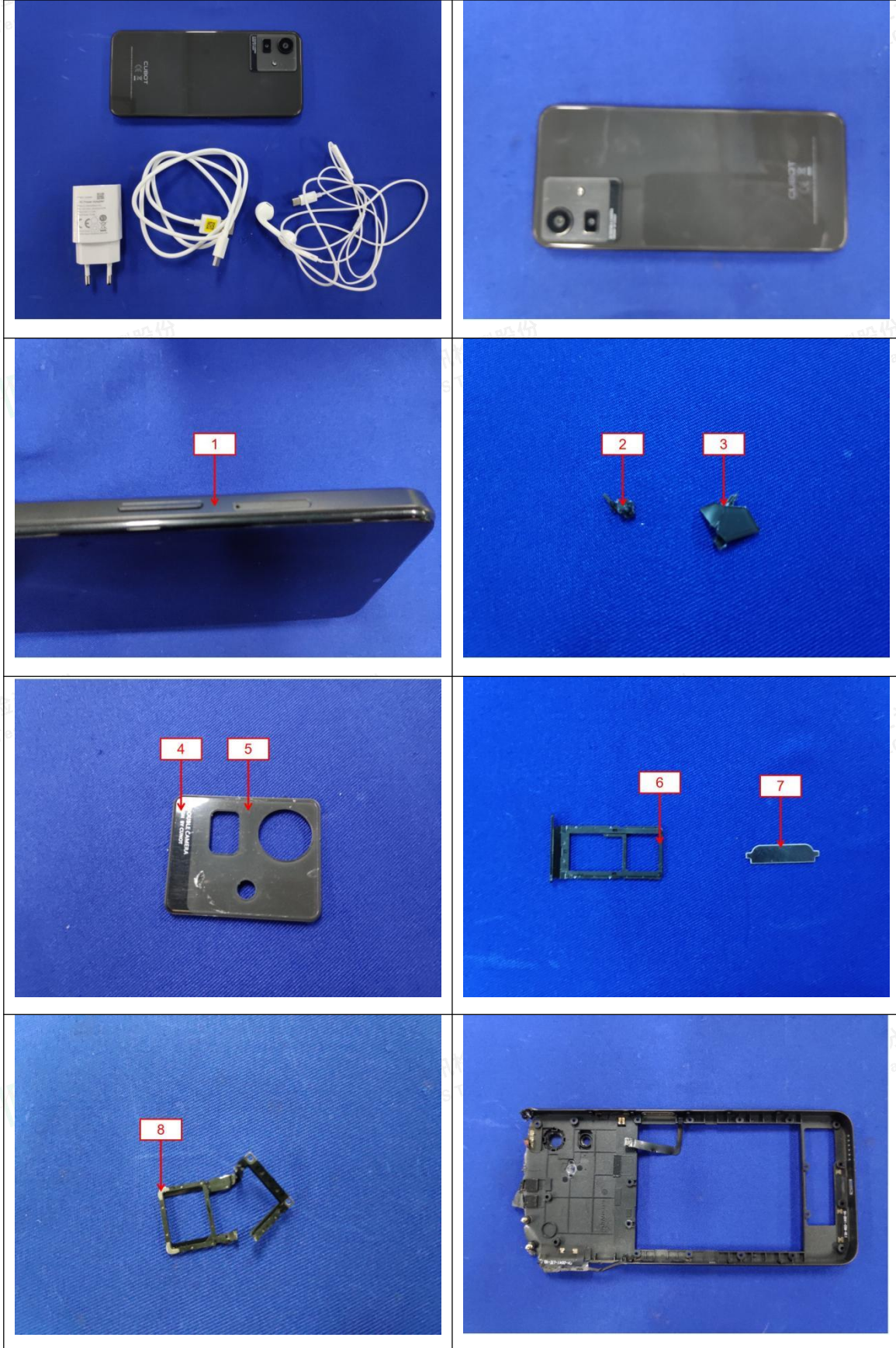
5. Phthalates(DBP, BBP, DEHP & DIBP) : IEC 62321-8:2017

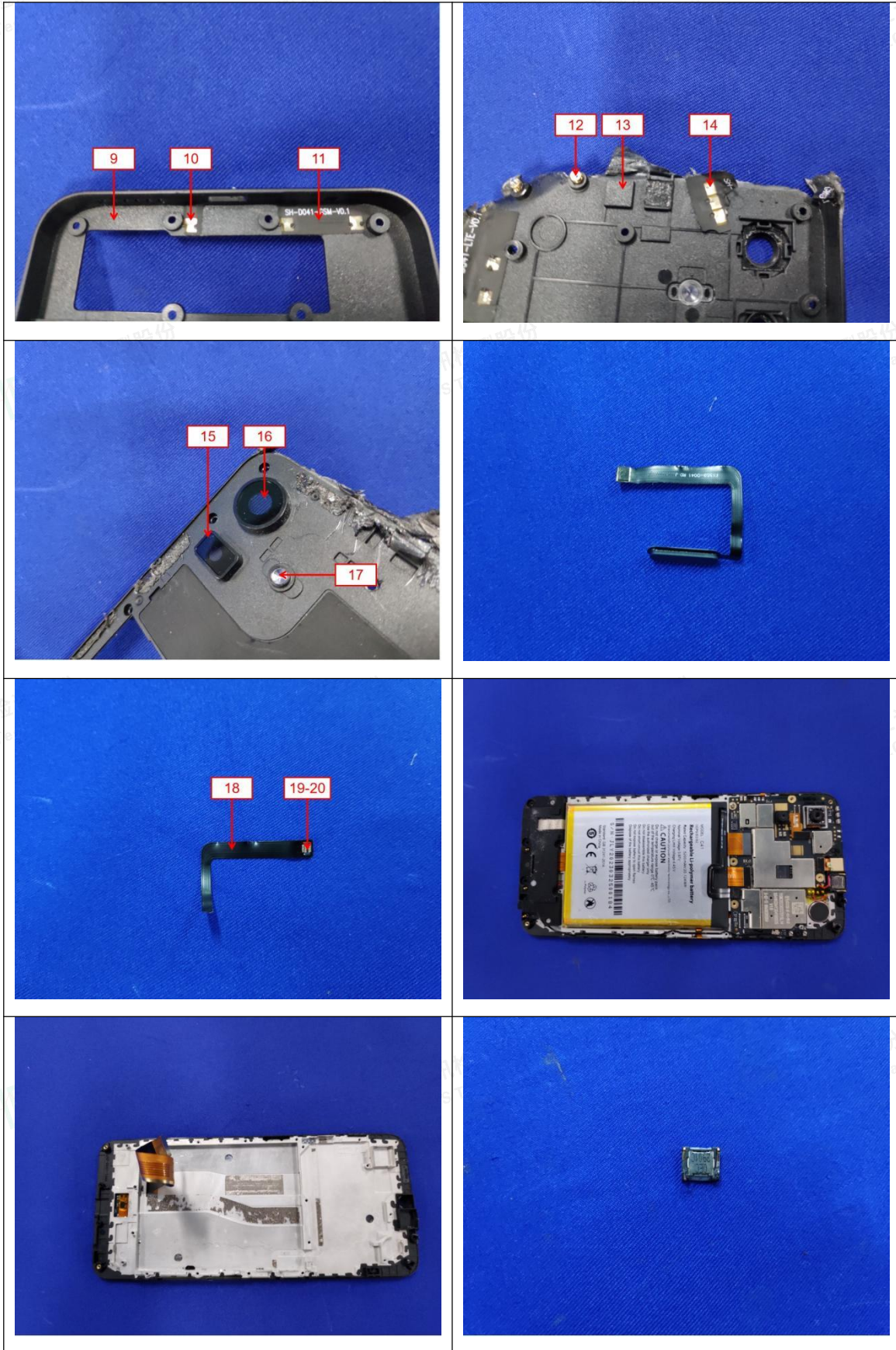


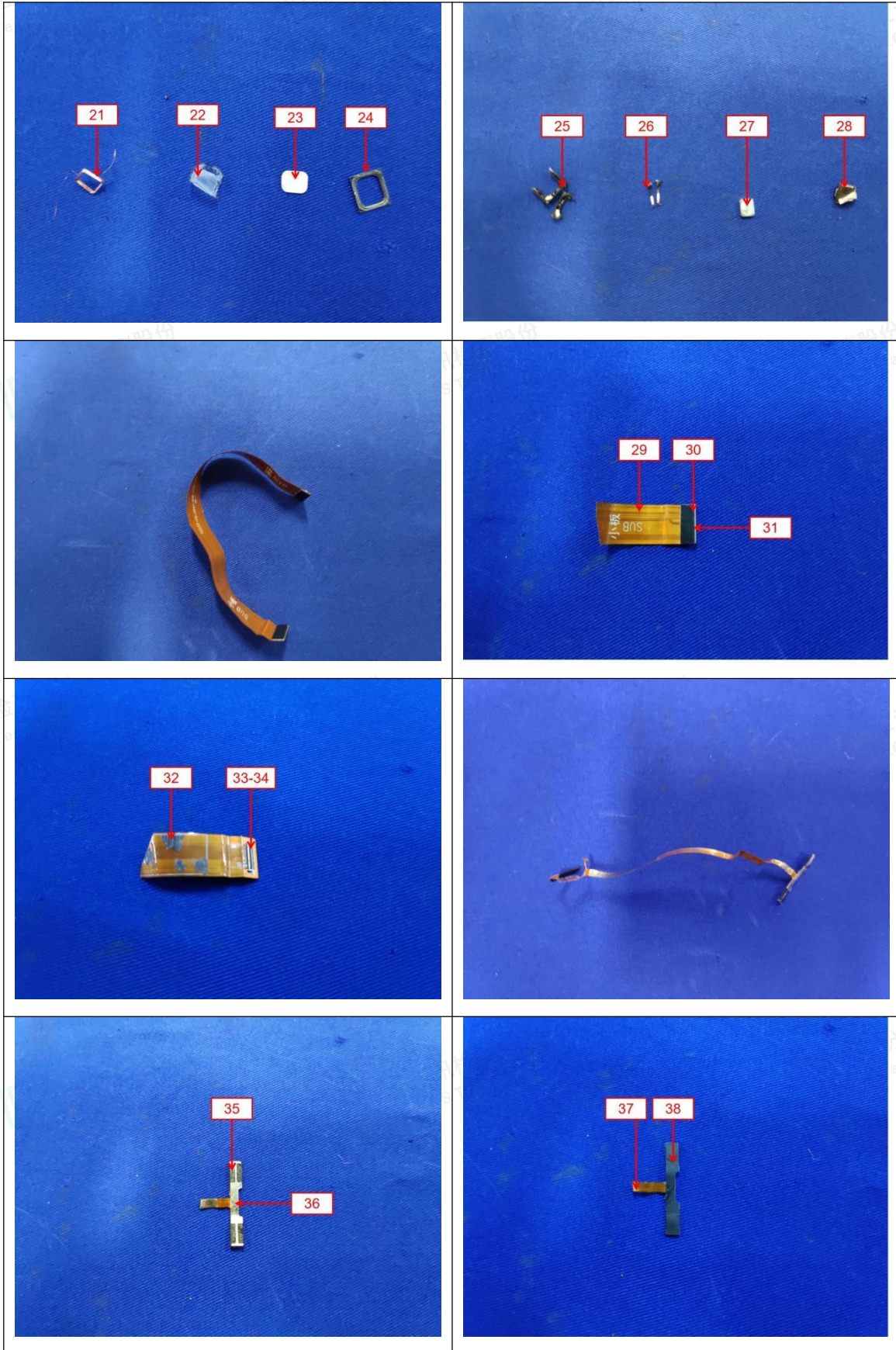


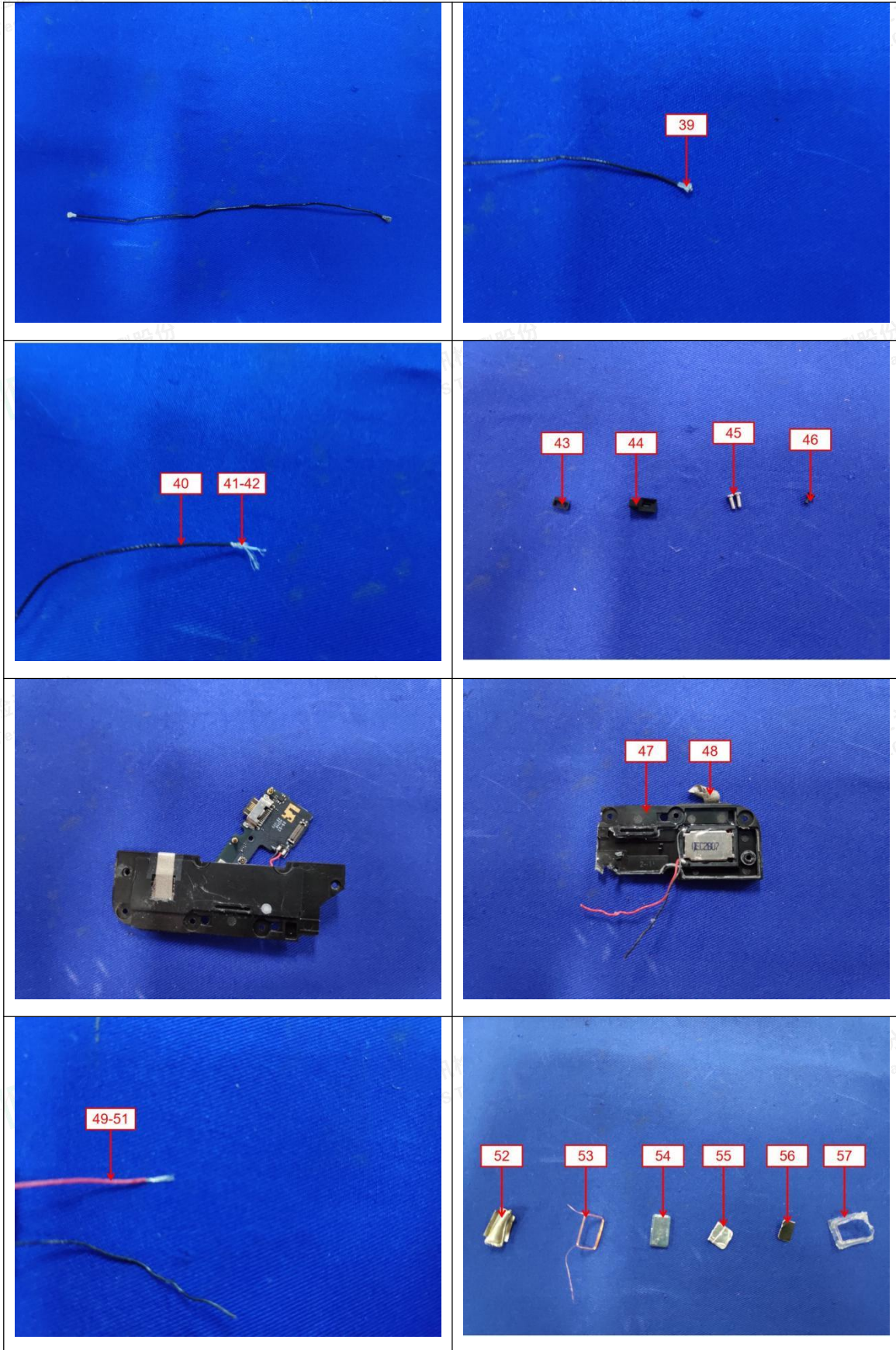
The photo(s) of the sample

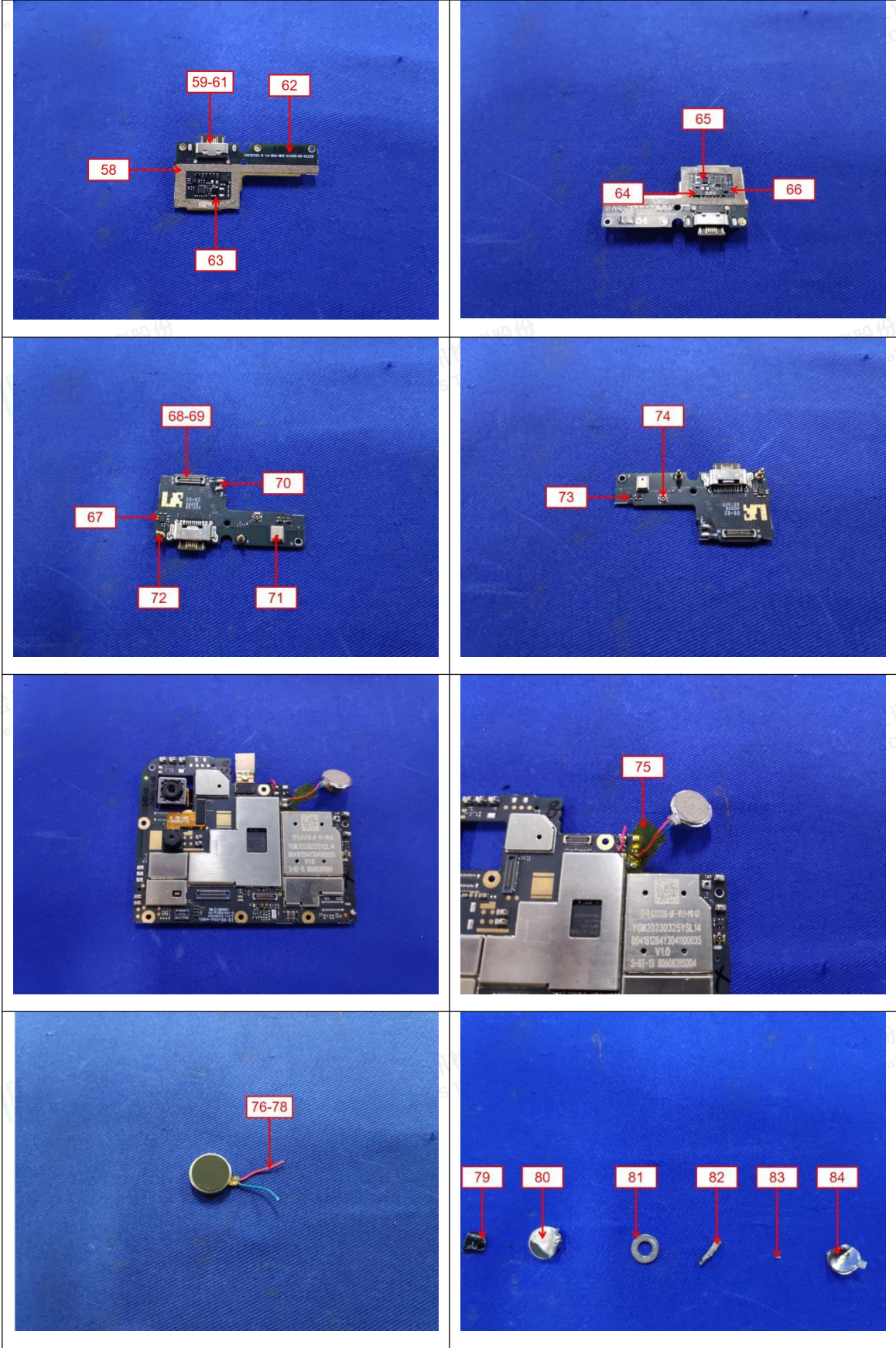


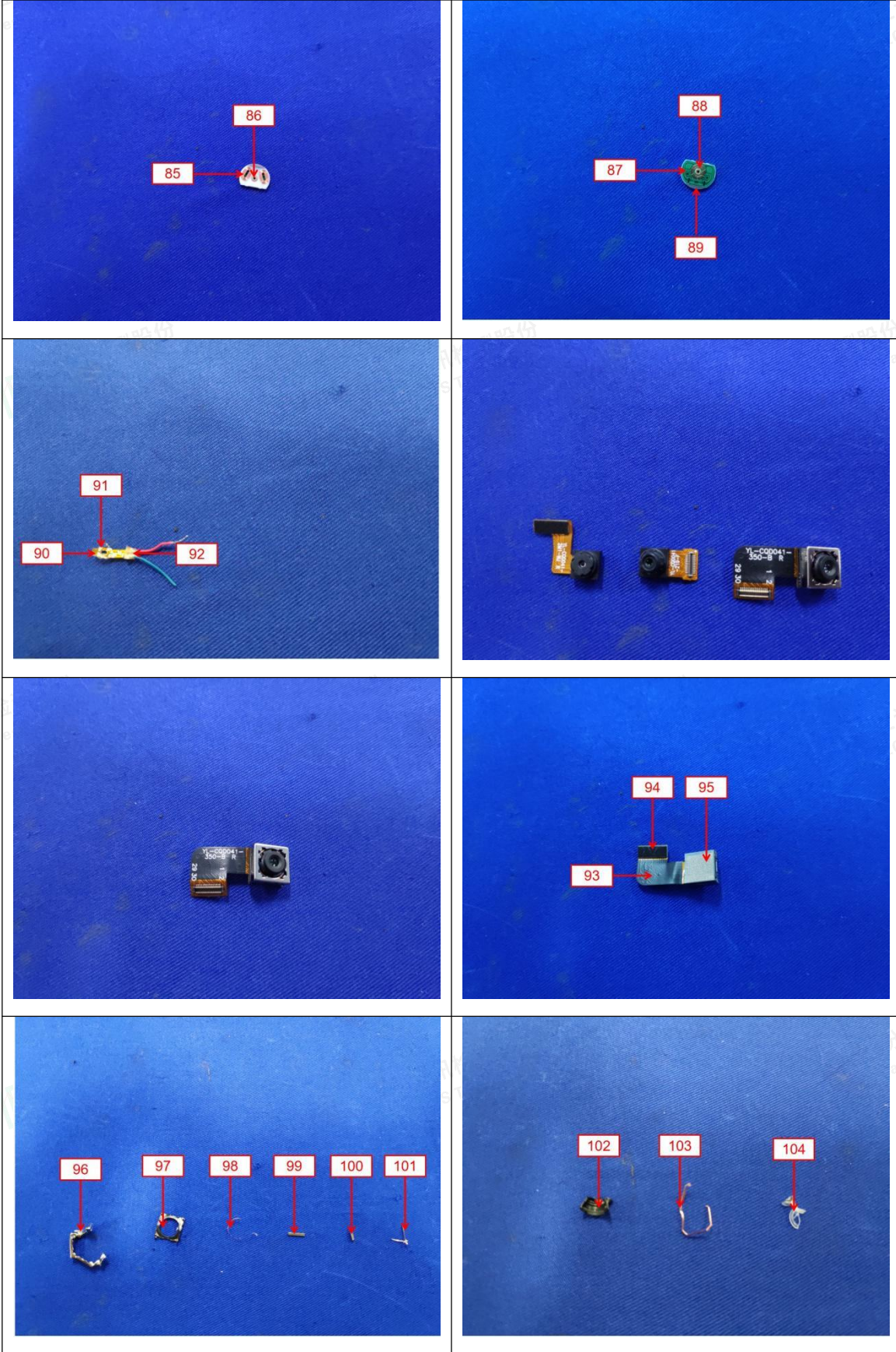


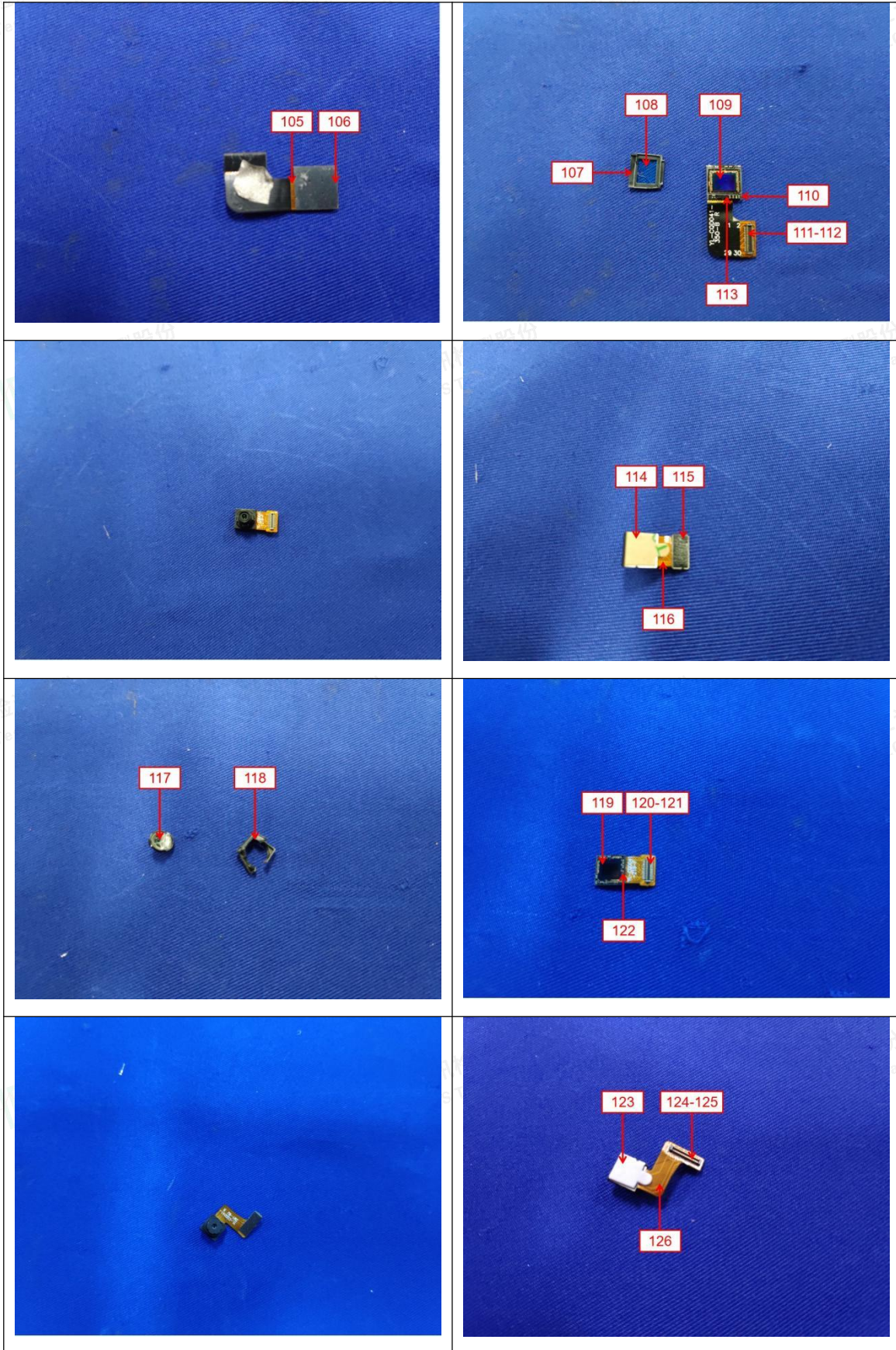




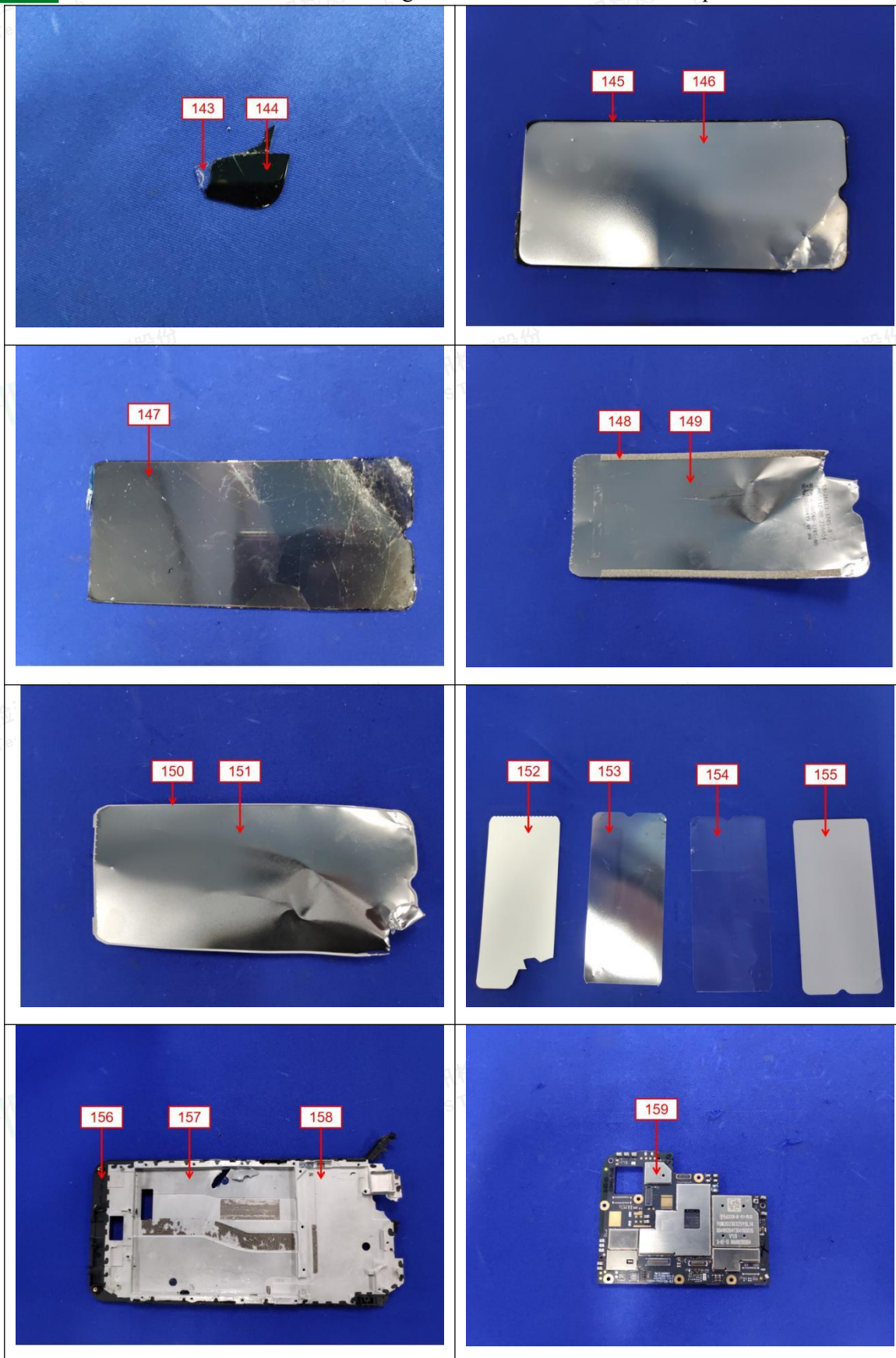


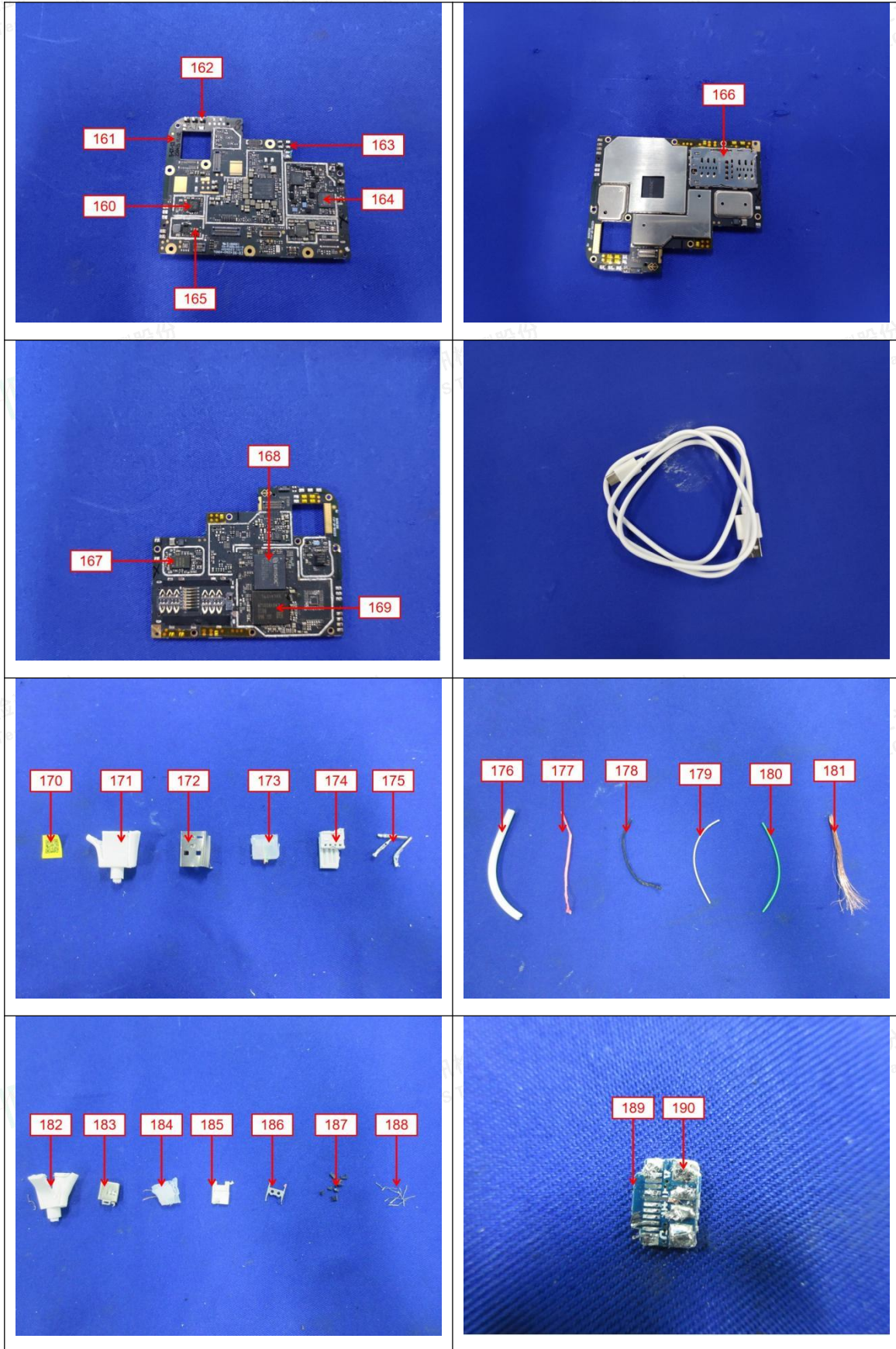


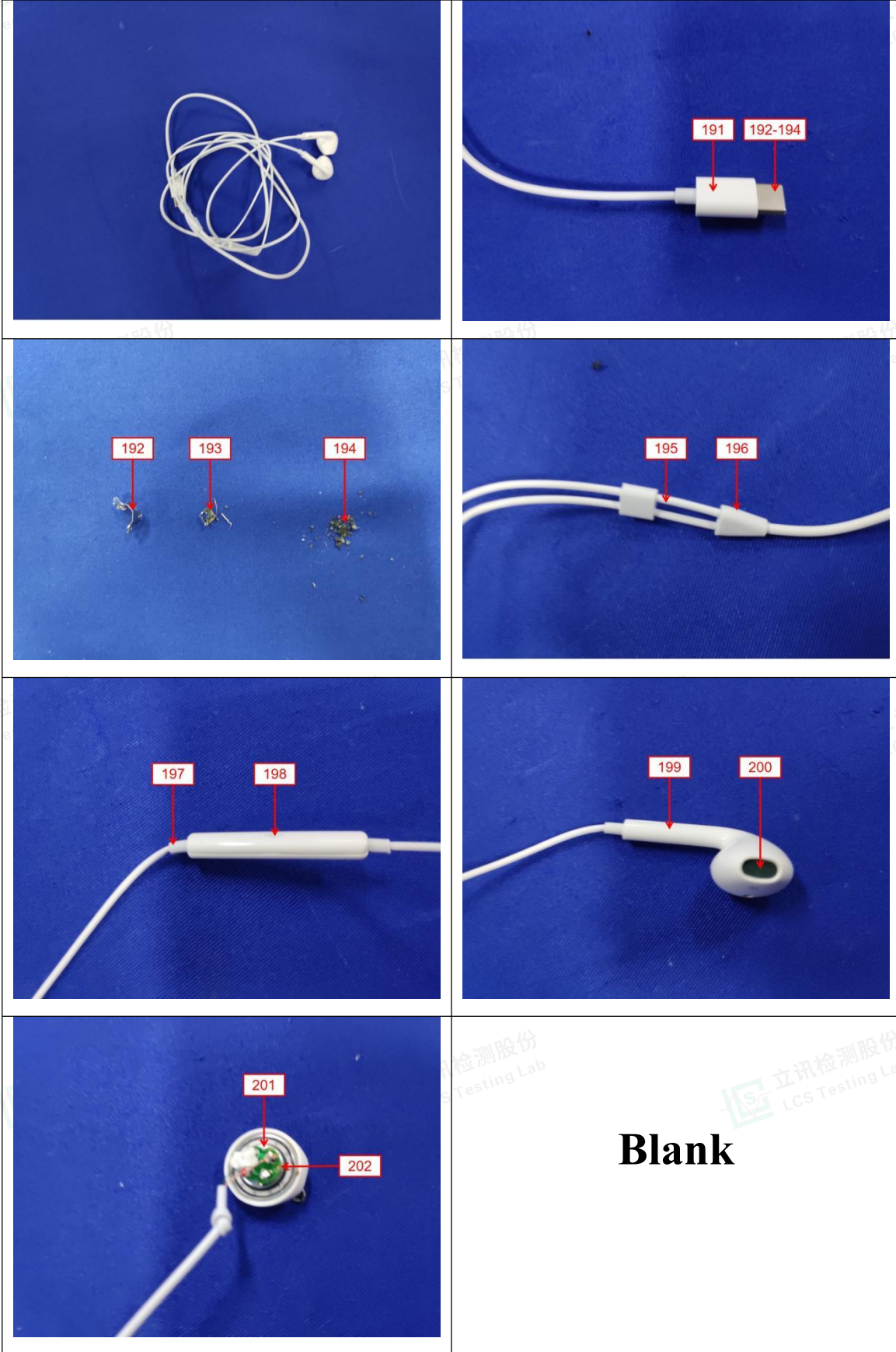














Statement:

1. The test report is invalid without the signature of the approver and the special seal for the company's report;
2. The company name, address and sample information shown on the report were provided by the applicant who should be responsible for the authenticity which are not verified by LCS;
3. The test results in this report are only responsible for the tested samples;
4. Without written approval of LCS, this report can't be reproduced except in full;
5. In case of any discrepancy between the corresponding Chinese and English contents in the test report, the Chinese version shall prevail.

*** End of Report ***

