



TEST REPORT

Report No.: 2401T77469E

Date: June 25, 2024

Page 1 of 44

Shenzhen Huafurui Technology Co., Ltd

Unit 601-03, 6/F, Block A, Building 1, Ganfeng Technology Building, No. 993 Jiaxian Road, Xiangjiaotang Community, Bantian Street, Longgang District, Shenzhen, P.R. China

Report on the submitted samples said to be:

Sample Description:	Smartphone
Style/Item No.:	MAX 5
Country of Origin:	China
Brand:	CUBOT
Sample Receiving Date:	May 22,2024
Lately Re-submit Date:	June 05,2024
Testing Period:	May 22,2024 - June 11,2024
Result:	Please refer to next page(s).

Signed for and on behalf of

BACL

Checked by: _____
Queenie Lee

Approved by: _____
Len Xie

Bay Area Compliance Laboratories Corp. (Shenzhen)

5/F. (B-West), 6&7/F., The 3rd Phase of Wanli Industrial Building D, Shihua Road, Fubao Community, Fubao Subdistrict, Futian District, Shenzhen, Guangdong, China

Tel: +86-755-33320018 Fax: +86-755-33320008

QB-CH-R001 (V1.0)



TEST REPORT

Report No.: 2401T77469E

Date: June 25, 2024

Page 2 of 44

Summary of Test Result:

TEST REQUEST

CONCLUSION

A RoHS Directive 2011/65/EU and amendment directives (EU) 2015/863 on Lead, Cadmium, Mercury, Hexavalent Chromium, PBBs & PBDEs, Phthalates (DBP, BBP, DEHP, DIBP) content

A.1 XRF screening test

Pass

A.2 Wet Chemical Testing

A.2.1 Chromium VI (Cr(VI)) Content

Pass

A.2.2 PBBs & PBDEs content

Pass

A.3 Phthalates (DBP, BBP, DEHP, DIBP) content

Pass

TEST REPORT

Report No.: 2401T77469E

Date: June 25, 2024

Page 3 of 44

A RoHS Directive 2011/65/EU and amendment directives (EU) 2015/863 on Lead, Cadmium, Mercury, Hexavalent Chromium, PBBs & PBDEs, Phthalates (DBP, BBP, DEHP, DIBP) content

A.1 XRF screening test

Test method: IEC 62321-3-1:2013

Seq No.	Tested Part(s)	Result				
		Pb	Cd	Hg	Cr	Br
(1)	White PVC(cover, plug, type-C cable)	BL	BL	BL	BL	BL
(2)	Silvery metal(cover, plug, type-C cable)	BL	BL	BL	BL	---
(3)	White plastic(inner cover, plug, type-C cable)	BL	BL	BL	BL	BL
(4)	Black plastic(pin holder, plug, type-C cable)	BL	BL	BL	BL	BL
(5)	Silvery metal(hook, plug, type-C cable)	BL	BL	BL	BL	---
(6)	Silvery metal(pin, plug, type-C cable)	BL	BL	BL	BL	---
(7)	Translucent plastic(PCB cover, plug, type-C cable)	BL	BL	BL	BL	BL
(8)	Brown body(SMD capacitor, PCB, small plug, type-C cable)	BL	BL	BL	BL	BL
(9)	White printed blue coated beige plastic with coppery metal(PCB, small plug, type-C cable)	BL	BL	BL	BL	BL
(10)	Silvery solder(PCB, small plug, type-C cable)	BL	BL	BL	BL	---
(11)	White PVC(wire jacket, type-C cable)	BL	BL	BL	BL	BL
(12)	Green plastic(inner wire jacket, type-C cable)	BL	BL	BL	BL	BL
(13)	White plastic(inner wire jacket, type-C cable)	BL	BL	BL	BL	BL
(14)	Yellow plastic(inner wire jacket, type-C cable)	BL	BL	BL	BL	BL
(15)	Black PVC(inner wire jacket, type-C cable)	BL	BL	BL	BL	BL
(16)	Pink PVC(inner wire jacket, type-C cable)	BL	BL	BL	BL	BL
(17)	Coppery metal(inner wire, type-C cable)	BL	BL	BL	BL	---
(18)	White plastic(cover, plug, earphone)	BL	BL	BL	BL	BL
(19)	Silvery metal(cover, plug, earphone)	BL	BL	BL	BL	---
(20)	Black plastic(inner cover, plug, earphone)	BL	BL	BL	BL	BL
(21)	Black plastic(pin holder, plug, earphone)	BL	BL	BL	BL	BL
(22)	Silvery metal(hook, plug, earphone)	BL	BL	BL	BL	---
(23)	Silvery metal(pin, plug, earphone)	BL	BL	BL	BL	---
(24)	White soft plastic(PCB cover, plug, earphone)	BL	BL	BL	BL	BL
(25)*	White printed blue coated beige plastic with coppery metal(PCB, plug, earphone)	BL	BL	BL	BL	X
(26)	Silvery solder(PCB, plug, earphone, raw material)	BL	BL	BL	BL	---

TEST REPORT

Report No.: 2401T77469E

Date: June 25, 2024

Page 4 of 44

Seq No.	Tested Part(s)	Result				
		Pb	Cd	Hg	Cr	Br
(27)	Black printed white plastic(cover, controller, earphone)	BL	BL	BL	BL	BL
(28)	Silvery plastic(cover, MIC, PCB, controller, earphone)	BL	BL	BL	BL	BL
(29)*	Green coated beige plastic with coppery metal(PCB, MIC, PCB, controller, earphone)	BL	BL	BL	BL	X
(30)	Silvery metal(slice, MIC, PCB, controller, earphone)	BL	BL	BL	BL	---
(31)	Silvery metal(loop, MIC, PCB, controller, earphone)	BL	BL	BL	BL	---
(32)	Black plastic(loop, MIC, PCB, controller, earphone)	BL	BL	BL	BL	BL
(33)	Yellow clear plastic(loop, MIC, PCB, controller, earphone)	BL	BL	BL	BL	BL
(34)	Silvery plastic(film, MIC, PCB, controller, earphone)	BL	BL	BL	BL	BL
(35)	Silvery metal(film holder, MIC, PCB, controller, earphone)	BL	BL	BL	BL	---
(36)	Clear plastic with adhesive(sticker, switch, PCB, controller, earphone)	BL	BL	BL	BL	BL
(37)	Silvery metal(clip, switch, PCB, controller, earphone)	BL	BL	BL	BL	---
(38)*#2	Black body(SMD resistor, PCB, controller, earphone)	OL (3146)	BL	BL	X	BL
(39)	Blue coated beige plastic with coppery metal(PCB, controller, earphone)	BL	BL	BL	BL	BL
(40)	Silvery solder(PCB, controller, earphone, raw material)	BL	BL	BL	BL	---
(41)	White soft plastic(clip wire, controller, earphone)	BL	BL	BL	BL	BL
(42)	Black printed white plastic(cover, speaker, earphone)	BL	BL	BL	BL	BL
(43)	Black fabric with adhesive(net, cover, speaker, earphone)	BL	BL	BL	BL	BL
(44)	White soft plastic(sleeve, cover, speaker, earphone)	BL	BL	BL	BL	BL
(45)	White foam with adhesive(sticker, speaker, earphone)	BL	BL	BL	BL	BL
(46)	White dry glue with red dry glue(PCB, speaker, earphone)	BL	BL	BL	BL	BL
(47)*	Green coated brown plastic with coppery metal(PCB, speaker, earphone)	BL	BL	BL	BL	X
(48)	Silvery solder(PCB, speaker, earphone, raw material)	BL	BL	BL	BL	---
(49)	Silvery metal(cover, speaker, earphone)	BL	BL	BL	BL	---
(50)	Clear plastic with red dry glue(sticker, speaker, earphone)	BL	BL	BL	BL	BL
(51)	Coppery metal(coil, speaker, earphone)	BL	BL	BL	BL	---
(52)	Silvery metal(slice, speaker, earphone)	BL	BL	BL	BL	---
(53)	Silvery magnet(slice, speaker, earphone)	BL	BL	BL	BL	BL
(54)	Silvery metal(bowl, speaker, earphone)	BL	BL	BL	BL	---
(55)	White soft plastic(clip wire, wire jacket, earphone)	BL	BL	BL	BL	BL

TEST REPORT

Report No.: 2401T77469E

Date: June 25, 2024

Page 5 of 44

Seq No.	Tested Part(s)	Result				
		Pb	Cd	Hg	Cr	Br
(56)	White soft plastic(thick wire jacket, speaker, earphone)	BL	BL	BL	BL	BL
(57)	White soft plastic(thin wire jacket, speaker, earphone)	BL	BL	BL	BL	BL
(58)	Golden enameled wire(inner wire, speaker, earphone)	BL	BL	BL	BL	BL
(59)	Black enameled wire(inner wire, speaker, earphone)	BL	BL	BL	BL	BL
(60)	Red enameled wire(inner wire, speaker, earphone)	BL	BL	BL	BL	BL
(61)	Green enameled wire(inner wire, speaker, earphone)	BL	BL	BL	BL	BL
(62)	Blue enameled wire(inner wire, speaker, earphone)	BL	BL	BL	BL	BL
(63)	Silvery metal(pin, adapter)	BL	BL	BL	BL	---
(64)	White plastic(pin holder, adapter)	BL	BL	BL	BL	BL
(65)	Black printed white plastic(shell, adapter)	BL	BL	BL	BL	BL
(66)	Silvery metal(slice, main PCB, adapter)	BL	BL	BL	BL	---
(67)	Clear double faced adhesive tape(slice, main PCB, adapter)	BL	BL	BL	BL	BL
(68)	Black plastic(insulation sheet, main PCB, adapter)	BL	BL	BL	BL	BL
(69)	Silvery metal(contact chip, main PCB, adapter)	BL	BL	BL	BL	---
(70)	Black dry glue(main PCB, adapter)	BL	BL	BL	BL	BL
(71)	White dry glue(main PCB, adapter)	BL	BL	BL	BL	BL
(72)	Silvery metal(cover, USB socket, small PCB, adapter)	BL	BL	BL	BL	---
(73)	Black plastic(pin holder, USB socket, small PCB, adapter)	BL	BL	BL	BL	BL
(74)	Silvery metal(pin, USB socket, small PCB, adapter)	BL	BL	BL	BL	---
(75)	Black body(IC, small PCB, adapter)	BL	BL	BL	BL	BL
(76)	Black/white body(SMD resistor, small PCB, adapter)	BL	BL	BL	BL	BL
(77)	Brown body(SMD capacitor, small PCB, adapter)	BL	BL	BL	BL	BL
(78)*	White printed green coated beige plastic with coppery metal(small PCB, adapter)	BL	BL	BL	BL	X
(79)	Red printed silvery body(capacitor"C10" "C11", main PCB, adapter)	BL	BL	BL	BL	BL
(80)	Black printed blue body(capacitor"CY1", main PCB, adapter)	BL	BL	BL	BL	BL
(81)	Gray printed brown plastic(sleeve, capacitor"C1" "C2", main PCB, adapter)	BL	BL	BL	BL	BL
(82)	Silvery body(capacitor"C1" "C2", main PCB, adapter)	BL	BL	BL	BL	BL
(83)	Gray printed black plastic(sleeve, capacitor"C3", main PCB, adapter)	BL	BL	BL	BL	BL
(84)	Silvery body(capacitor"C3", main PCB, adapter)	BL	BL	BL	BL	BL
(85)	Black printed yellow body(capacitor"CX1", main PCB, adapter)	BL	BL	BL	BL	BL

TEST REPORT

Report No.: 2401T77469E

Date: June 25, 2024

Page 6 of 44

Seq No.	Tested Part(s)	Result				
		Pb	Cd	Hg	Cr	Br
(86)	White printed black body(capacitor"NTC1", main PCB, adapter)	BL	BL	BL	BL	BL
(87)	Silvery metal(pin, capacitor"NTC1", main PCB, adapter)	BL	BL	BL	BL	---
(88)	Brown body(fuse, PCB, adapter)	BL	BL	BL	BL	BL
(89)	Black plastic(sleeve, inductor"L1", PCB, adapter)	BL	BL	BL	BL	BL
(90)	Coppery metal(coil, inductor"L1", PCB, adapter)	BL	BL	BL	BL	---
(91)	Black magnet(coil holder, inductor"L1", PCB, adapter)	BL	BL	BL	BL	BL
(92)	Black printed clear plastic with adhesive(tape, transformer, PCB, adapter)	BL	BL	BL	BL	BL
(93)	Yellow plastic with adhesive(tape, transformer, PCB, adapter)	BL	BL	BL	BL	BL
(94)	Silvery metal(pin, transformer, PCB, adapter)	BL	BL	BL	BL	---
(95)	Black magnet(frame, transformer, PCB, adapter)	BL	BL	BL	BL	BL
(96)	Black plastic(frame, transformer, PCB, adapter)	BL	BL	BL	BL	BL
(97)	Coppery metal(coil, transformer, PCB, adapter)	BL	BL	BL	BL	---
(98)	Yellow enameled wire(coil, transformer, PCB, adapter)	BL	BL	BL	BL	BL
(99)	Black plastic(sleeve, coil, transformer, PCB, adapter)	BL	BL	BL	BL	BL
(100)	Translucent plastic(sleeve, coil, transformer, PCB, adapter)	BL	BL	BL	BL	BL
(101)	Black plastic(cover, triode "Q1", PCB, adapter)	BL	BL	BL	BL	BL
(102)*1	Coppery metal with silvery solder(triode "Q1", PCB, adapter)	OL (880208)	BL	BL	BL	---
(103)	Silvery metal(pin, triode "Q1", PCB, adapter)	BL	BL	BL	BL	---
(104)	Black body(big IC, PCB, adapter)	BL	BL	BL	BL	BL
(105)	Black body(middle IC, PCB, adapter)	BL	BL	BL	BL	BL
(106)	Black body(small IC, PCB, adapter)	BL	BL	BL	BL	BL
(107)	Black body(SMD bridge rectifier, PCB, adapter)	BL	BL	BL	BL	BL
(108)	Black body(big SMD diode, PCB, adapter)	BL	BL	BL	BL	BL
(109)	Black body(small SMD diode, PCB, adapter)	BL	BL	BL	BL	BL
(110)	Black body(big SMD resistor, PCB, adapter)	BL	BL	BL	BL	BL
(111)	Black body(middle SMD resistor, PCB, adapter)	BL	BL	BL	BL	BL
(112)	Black body(small SMD resistor, PCB, adapter)	BL	BL	BL	BL	BL
(113)	Brown body(SMD capacitor, PCB, adapter)	BL	BL	BL	BL	BL
(114)	Gray body(SMD capacitor, PCB, adapter)	BL	BL	BL	BL	BL

TEST REPORT

Report No.: 2401T77469E

Date: June 25, 2024

Page 7 of 44

Seq No.	Tested Part(s)	Result				
		Pb	Cd	Hg	Cr	Br
(115)*	White printed green coated beige plastic with coppery metal(PCB, adapter)	BL	BL	BL	BL	X
(116)	Silvery solder(PCB, adapter)	BL	BL	BL	BL	---
(117)	Black plated silvery metal(SIM tray, Smart phone)	BL	BL	BL	BL	---
(118)	Black plastic(SIM tray, Smart phone)	BL	BL	BL	BL	BL
(119)	Clear glass(rear cover, Smart phone)	BL	BL	BL	BL	BL
(120)	Black plastic with adhesive(rear cover, Smart phone)	BL	BL	BL	BL	BL
(121)	Black foam with adhesive(stick, rear cover, Smart phone)	BL	BL	BL	BL	BL
(122)	Black plated silvery metal(cover, button, Smart phone)	BL	BL	BL	BL	---
(123)	Black plastic(cover, button, Smart phone)	BL	BL	BL	BL	BL
(124)	Black plastic(middle cover, Smart phone)	BL	BL	BL	BL	BL
(125)	Black coated clear glass(big camera cover, middle cover, Smart phone)	BL	BL	BL	BL	BL
(126)	Black coated clear glass(small camera cover, middle cover, Smart phone)	BL	BL	BL	BL	BL
(127)	Clear plastic(LED cover, middle cover, Smart phone)	BL	BL	BL	BL	BL
(128)	Black printed silvery metal(screw, middle cover, Smart phone)	BL	BL	BL	BL	BL
(129)	Silvery metal(screw, middle cover, Smart phone)	BL	BL	BL	BL	---
(130)	Black printed silvery body(fingerprint recognition, Smart phone)	BL	BL	BL	BL	BL
(131)	White printed black plastic with coppery metal(FPC, fingerprint recognition, Smart phone)	BL	BL	BL	BL	BL
(132)	Black plastic(cover, socket, FPC, fingerprint recognition, Smart phone)	BL	BL	BL	BL	BL
(133)	Golden metal(pin, socket, FPC, fingerprint recognition, Smart phone)	BL	BL	BL	BL	---
(134)	Black printed brown plastic with coppery metal(LED FPC, middle cover, Smart phone)	BL	BL	BL	BL	BL
(135)	Yellow body(LED, middle cover, Smart phone)	BL	BL	BL	BL	BL
(136)	Black plastic(shell, big speaker, Smart phone)	BL	BL	BL	BL	BL
(137)	Clear dry glue(shell, big speaker, Smart phone)	BL	BL	BL	BL	BL
(138)	Black plastic(wire jacket, big speaker, Smart phone)	BL	BL	BL	BL	BL
(139)	Red plastic(wire jacket, big speaker, Smart phone)	BL	BL	BL	BL	BL
(140)	Silvery metal(wire, big speaker, Smart phone)	BL	BL	BL	BL	---
(141)	Silvery solder(big speaker, Smart phone)	BL	BL	BL	BL	---
(142)	Silvery metal(contact chip, big speaker, Smart phone)	BL	BL	BL	BL	---
(143)	Black plastic(frame, big speaker, Smart phone)	BL	BL	BL	BL	BL

TEST REPORT

Report No.: 2401T77469E

Date: June 25, 2024

Page 8 of 44

Seq No.	Tested Part(s)	Result				
		Pb	Cd	Hg	Cr	Br
(144)	Silvery metal(frame, big speaker, Smart phone)	BL	BL	BL	BL	---
(145)	Clear plastic with red/black dry glue(film, big speaker, Smart phone)	BL	BL	BL	BL	BL
(146)	Silvery metal(film, big speaker, Smart phone)	BL	BL	BL	BL	---
(147)	Coppery metal(coil, big speaker, Smart phone)	BL	BL	BL	BL	---
(148)	Silvery metal(slice, big speaker, Smart phone)	BL	BL	BL	BL	---
(149)	Silvery magnet(slice, big speaker, Smart phone)	BL	BL	BL	BL	BL
(150)	Silvery metal(base, big speaker, Smart phone)	BL	BL	BL	BL	---
(151)	Black fabric with adhesive(net, holder, small speaker, earphone)	BL	BL	BL	BL	BL
(152)	Black plastic(holder, small speaker, earphone)	BL	BL	BL	BL	BL
(153)	Black plastic(wire jacket, small speaker, Smart phone)	BL	BL	BL	BL	BL
(154)	Red plastic(wire jacket, small speaker, Smart phone)	BL	BL	BL	BL	BL
(155)	Silvery metal(wire, small speaker, Smart phone)	BL	BL	BL	BL	---
(156)	Black fabric with adhesive(net, small speaker, Smart phone)	BL	BL	BL	BL	BL
(157)	Black dry glue(small speaker, Smart phone)	BL	BL	BL	BL	BL
(158)	Silvery solder(small speaker, Smart phone)	BL	BL	BL	BL	---
(159)	Silvery metal(contact chip, small speaker, Smart phone)	BL	BL	BL	BL	---
(160)	Black plastic(frame, small speaker, Smart phone)	BL	BL	BL	BL	BL
(161)	Silvery metal(cover, small speaker, Smart phone)	BL	BL	BL	BL	---
(162)	Black/silvery metal(film, small speaker, Smart phone)	BL	BL	BL	BL	---
(163)	Clear plastic(film, small speaker, Smart phone)	BL	BL	BL	BL	BL
(164)	Coppery metal(coil, small speaker, Smart phone)	BL	BL	BL	BL	---
(165)	Silvery magnet(slice, small speaker, Smart phone)	BL	BL	BL	BL	BL
(166)	Silvery metal(base, small speaker, Smart phone)	BL	BL	BL	BL	---
(167)	Black plastic(frame, back small camera, Smart phone)	BL	BL	BL	BL	BL
(168)	Black plastic(cover, back small camera, Smart phone)	BL	BL	BL	BL	BL
(169)	Clear plastic(lens, back small camera, Smart phone)	BL	BL	BL	BL	BL
(170)	Black body(IC, back small camera, Smart phone)	BL	BL	BL	BL	BL
(171)	Silvery metal(cover, back middle camera, Smart phone)	BL	BL	BL	BL	---
(172)	Silvery magnet(back middle camera, Smart phone)	BL	BL	BL	BL	BL
(173)	Silvery metal(loop, back middle camera, Smart phone)	BL	BL	BL	BL	---

TEST REPORT

Report No.: 2401T77469E

Date: June 25, 2024

Page 9 of 44

Seq No.	Tested Part(s)	Result				
		Pb	Cd	Hg	Cr	Br
(174)	Coppery metal(coil, back middle camera, Smart phone)	BL	BL	BL	BL	---
(175)	Black plastic(cover, back middle camera, Smart phone)	BL	BL	BL	BL	BL
(176)	Clear plastic(big lens, back middle camera, Smart phone)	BL	BL	BL	BL	BL
(177)	Clear plastic(small lens, back middle camera, Smart phone)	BL	BL	BL	BL	BL
(178)	Black plastic(gasket, back middle camera, Smart phone)	BL	BL	BL	BL	BL
(179)	Blue glass(lens, back middle camera, Smart phone)	BL	BL	BL	BL	BL
(180)	Black body(big IC, back middle camera, Smart phone)	BL	BL	BL	BL	BL
(181)	Brown body(SMD capacitor, back middle camera, Smart phone)	BL	BL	BL	BL	BL
(182)	Black body(small IC, back middle camera, Smart phone)	BL	BL	BL	BL	BL
(183)	White printed black/brown plastic with coppery metal(FPC, back small/middle camera, Smart phone)	BL	BL	BL	BL	BL
(184)	Black plastic(socket, FPC, back small/middle camera, Smart phone)	BL	BL	BL	BL	BL
(185)	Golden metal(pin, socket, FPC, back small/middle camera, Smart phone)	BL	BL	BL	BL	---
(186)	Silvery metal(stiffening plate, FPC, back small/middle camera, Smart phone)	BL	BL	BL	BL	---
(187)	Silvery metal(cover, back big camera, Smart phone)	BL	BL	BL	BL	---
(188)	Silvery magnet(back big camera, Smart phone)	BL	BL	BL	BL	BL
(189)	Silvery metal(loop, back big camera, Smart phone)	BL	BL	BL	BL	---
(190)	Coppery metal(coil, back big camera, Smart phone)	BL	BL	BL	BL	---
(191)	Black plastic(cover, back big camera, Smart phone)	BL	BL	BL	BL	BL
(192)	Clear plastic(big lens, back big camera, Smart phone)	BL	BL	BL	BL	BL
(193)	Clear plastic(middle lens, back big camera, Smart phone)	BL	BL	BL	BL	BL
(194)	Clear plastic(small lens, back big camera, Smart phone)	BL	BL	BL	BL	BL
(195)	Black plated silvery metal(gasket, back big camera, Smart phone)	BL	BL	BL	BL	---
(196)	Black plastic(big gasket, back big camera, Smart phone)	BL	BL	BL	BL	BL
(197)	Black plastic(middle gasket, back big camera, Smart phone)	BL	BL	BL	BL	BL
(198)	Black plastic(small gasket, back big camera, Smart phone)	BL	BL	BL	BL	BL
(199)	Black plastic(frame, back big camera, Smart phone)	BL	BL	BL	BL	BL
(200)	Blue glass(gasket, front camera, Smart phone), back big camera, Smart phone)	BL	BL	BL	BL	BL
(201)	Black body(big IC, back big camera, Smart phone)	BL	BL	BL	BL	BL
(202)	Brown body(SMD capacitor, back big camera, Smart phone)	BL	BL	BL	BL	BL
(203)	Black body(small IC, back middle camera, Smart phone)	BL	BL	BL	BL	BL

Bay Area Compliance Laboratories Corp. (Shenzhen)

5/F. (B-West), 6&7/F., The 3rd Phase of Wanli Industrial Building D, Shihua Road, Fubao Community, Fubao Subdistrict, Futian District, Shenzhen, Guangdong, China

QB-CH-R001 (V1.0)

Tel: +86-755-33320018 Fax: +86-755-33320008

TEST REPORT

Report No.: 2401T77469E

Date: June 25, 2024

Page 10 of 44

Seq No.	Tested Part(s)	Result				
		Pb	Cd	Hg	Cr	Br
(204)	White printed black/brown plastic with coppery metal(FPC, back big camera, Smart phone)	BL	BL	BL	BL	BL
(205)	Black plastic(socket, FPC, back big camera, Smart phone)	BL	BL	BL	BL	BL
(206)	Golden metal(pin, socket, FPC, back big camera, Smart phone)	BL	BL	BL	BL	---
(207)	Silvery metal(stiffening plate, FPC, back big camera, Smart phone)	BL	BL	BL	BL	---
(208)	Black plastic(cover, front camera, Smart phone)	BL	BL	BL	BL	BL
(209)	Black plated silvery metal(gasket, front camera, Smart phone)	BL	BL	BL	BL	---
(210)	Clear plastic(lens, front camera, Smart phone)	BL	BL	BL	BL	BL
(211)	Black plastic(frame, front camera, Smart phone)	BL	BL	BL	BL	BL
(212)	Blue glass(lens, front camera, Smart phone)	BL	BL	BL	BL	BL
(213)	Black body(IC, front camera, Smart phone)	BL	BL	BL	BL	BL
(214)	Brown body(SMD capacitor, front camera, Smart phone)	BL	BL	BL	BL	BL
(215)	Brown plastic with coppery metal(FPC, front camera, Smart phone)	BL	BL	BL	BL	BL
(216)	Black plastic(pin holder, socket, FPC, front camera, Smart phone)	BL	BL	BL	BL	BL
(217)	Silvery metal(pin, socket, FPC, front camera, Smart phone)	BL	BL	BL	BL	---
(218)	Black foam with adhesive(stick, front camera, Smart phone)	BL	BL	BL	BL	BL
(219)	Silvery metal(stiffening plate, FPC, front camera, Smart phone)	BL	BL	BL	BL	---
(220)	Black foam with adhesive(sticker, motor, Smart phone)	BL	BL	BL	BL	BL
(221)	Clear dry glue(motor, Smart phone)	BL	BL	BL	BL	BL
(222)	Silvery metal(cover, motor, Smart phone)	BL	BL	BL	BL	---
(223)	Brown plastic with coppery metal(FPC, motor, Smart phone)	BL	BL	BL	BL	BL
(224)	Clear plastic with adhesive(inner sticker, motor, Smart phone)	BL	BL	BL	BL	BL
(225)	Silvery magnet(loop, motor, Smart phone)	BL	BL	BL	BL	BL
(226)	Silvery metal(pole, motor, Smart phone)	BL	BL	BL	BL	---
(227)	Coppery metal(bearing, motor, Smart phone)	BL	BL	BL	BL	---
(228)	Coppery metal(coil, motor, Smart phone)	BL	BL	BL	BL	---
(229)	Silvery metal(rotor, motor, Smart phone)	BL	BL	BL	BL	---
(230)	White plastic(holder, motor, Smart phone)	BL	BL	BL	BL	BL
(231)	Green coated brown plastic with coppery metal(PCB, motor, Smart phone)	BL	BL	BL	BL	BL
(232)	Black printed brown plastic with coppery metal(big FPC, PCB connect, Smart phone)	BL	BL	BL	BL	BL

TEST REPORT

Report No.: 2401T77469E

Date: June 25, 2024

Page 11 of 44

Seq No.	Tested Part(s)	Result				
		Pb	Cd	Hg	Cr	Br
(233)	Black plastic(pin holder, socket, big FPC, PCB connect, Smart phone)	BL	BL	BL	BL	BL
(234)	Silvery metal(pin, socket, big FPC, PCB connect, Smart phone)	BL	BL	BL	BL	---
(235)	Black printed brown plastic with coppery metal(small FPC, PCB connect, Smart phone)	BL	BL	BL	BL	BL
(236)	Black plastic(pin holder, socket, small FPC, PCB connect, Smart phone)	BL	BL	BL	BL	BL
(237)	Silvery metal(pin, socket, small FPC, PCB connect, Smart phone)	BL	BL	BL	BL	---
(238)	Silvery metal(cover, plug, connecting line, PCB, Smart phone)	BL	BL	BL	BL	---
(239)	Black plastic(pin holder, plug, connecting line, PCB, Smart phone)	BL	BL	BL	BL	BL
(240)	Silvery metal(pin, plug, connecting line, PCB, Smart phone)	BL	BL	BL	BL	---
(241)	Black plastic(wire jacket, connecting line, PCB, Smart phone)	BL	BL	BL	BL	BL
(242)	White plastic(wire jacket, connecting line, PCB, Smart phone)	BL	BL	BL	BL	BL
(243)	Silvery metal(net, connecting line, PCB, Smart phone)	BL	BL	BL	BL	---
(244)	White plastic(inner wire jacket, connecting line, PCB, Smart phone)	BL	BL	BL	BL	BL
(245)	Silvery metal(inner wire, connecting line, PCB, Smart phone)	BL	BL	BL	BL	---
(246)	Black plastic with adhesive(sticker, SIM socket, small PCB, Smart phone)	BL	BL	BL	BL	BL
(247)	Silvery metal(cover, SIM socket, small PCB, Smart phone)	BL	BL	BL	BL	---
(248)	Silvery metal(hook, SIM socket, small PCB, Smart phone)	BL	BL	BL	BL	---
(249)	Silvery metal(pole, SIM socket, small PCB, Smart phone)	BL	BL	BL	BL	---
(250)	Silvery metal(rivet, pole, SIM socket, small PCB, Smart phone)	BL	BL	BL	BL	---
(251)	Black plastic(pin holder, SIM socket, small PCB, Smart phone)	BL	BL	BL	BL	BL
(252)	Silvery metal(pin, SIM socket, small PCB, Smart phone)	BL	BL	BL	BL	---
(253)	Silvery metal(cover, power socket, small PCB, Smart phone)	BL	BL	BL	BL	---
(254)	Black plastic(pin holder, power socket, small PCB, Smart phone)	BL	BL	BL	BL	BL
(255)	Golden metal(pin, power socket, small PCB, Smart phone)	BL	BL	BL	BL	---
(256)	Black plastic(pin holder, big FPC socket, small PCB, Smart phone)	BL	BL	BL	BL	BL
(257)	Silvery metal(pin, big FPC socket, small PCB, Smart phone)	BL	BL	BL	BL	---
(258)	Black plastic(pin holder, small FPC socket, small PCB, Smart phone)	BL	BL	BL	BL	BL
(259)	Silvery metal(pin, small FPC socket, small PCB, Smart phone)	BL	BL	BL	BL	---
(260)	Golden metal(cover, connect socket, small PCB, Smart phone)	BL	BL	BL	BL	---
(261)	Black plastic(pin holder, connect socket, small PCB, Smart phone)	BL	BL	BL	BL	BL
(262)	Golden metal(pin, connect socket, small PCB, Smart phone)	BL	BL	BL	BL	---

Bay Area Compliance Laboratories Corp. (Shenzhen)

5/F. (B-West), 6&7/F., The 3rd Phase of Wanli Industrial Building D, Shihua Road, Fubao Community, Fubao Subdistrict, Futian District, Shenzhen, Guangdong, China

QB-CH-R001 (V1.0)

Tel: +86-755-33320018 Fax: +86-755-33320008

TEST REPORT

Report No.: 2401T77469E

Date: June 25, 2024

Page 12 of 44

Seq No.	Tested Part(s)	Result				
		Pb	Cd	Hg	Cr	Br
(263)	Silvery body(MIC, small PCB, Smart phone)	BL	BL	BL	BL	BL
(264)	Black body(square IC, small PCB, Smart phone)	BL	BL	BL	BL	BL
(265)	Black body(mirror surface square IC, small PCB, Smart phone)	BL	BL	BL	BL	BL
(266)	Black body(big rectangle IC, small PCB, Smart phone)	BL	BL	BL	BL	BL
(267)	Black body(small rectangle IC, small PCB, Smart phone)	BL	BL	BL	BL	BL
(268)	Black body(SMD diode, small PCB, Smart phone)	BL	BL	BL	BL	BL
(269)	Brown body(SMD capacitor, small PCB, Smart phone)	BL	BL	BL	BL	BL
(270)	White printed black coated beige plastic with coppery metal(small PCB, Smart phone)	BL	BL	BL	BL	BL
(271)	Silvery solder(small PCB, Smart phone)	BL	BL	BL	BL	---
(272)	Silvery metal(pin, small PCB, Smart phone)	BL	BL	BL	BL	---
(273)	Silvery metal(contact chip, small PCB, Smart phone)	BL	BL	BL	BL	---
(274)	Silvery metal(stator, Smart phone)	BL	BL	BL	BL	---
(275)	Coppery metal with adhesive(sticker, main PCB, Smart phone)	BL	BL	BL	BL	BL
(276)	Silvery metal(cover, main PCB, Smart phone)	BL	BL	BL	BL	---
(277)	Black plastic(pin holder, big FPC socket, main PCB, Smart phone)	BL	BL	BL	BL	BL
(278)	Silvery metal(pin, big FPC socket, main PCB, Smart phone)	BL	BL	BL	BL	---
(279)	Black plastic(pin holder, middle FPC socket, main PCB, Smart phone)	BL	BL	BL	BL	BL
(280)	Silvery metal(pin, middle FPC socket, main PCB, Smart phone)	BL	BL	BL	BL	---
(281)	Black plastic(pin holder, small FPC socket, main PCB, Smart phone)	BL	BL	BL	BL	BL
(282)	Silvery metal(pin, small FPC socket, main PCB, Smart phone)	BL	BL	BL	BL	---
(283)	Black plastic(pin holder, big socket, main PCB, Smart phone)	BL	BL	BL	BL	BL
(284)	Silvery metal(pin holder, big socket, main PCB, Smart phone)	BL	BL	BL	BL	---
(285)	Black plastic(pin holder, small socket, main PCB, Smart phone)	BL	BL	BL	BL	BL
(286)	Silvery metal(pin, small socket, main PCB, Smart phone)	BL	BL	BL	BL	---
(287)	Silvery metal(cover, antennae socket, main PCB, Smart phone)	BL	BL	BL	BL	---
(288)	Black plastic(pin, antennae socket, main PCB, Smart phone)	BL	BL	BL	BL	BL
(289)	Silvery metal(pin, antennae socket, main PCB, Smart phone)	BL	BL	BL	BL	---
(290)	Golden metal(cover, connect socket, main PCB, Smart phone)	BL	BL	BL	BL	---
(291)	Black plastic(pin holder, connect socket, main PCB, Smart phone)	BL	BL	BL	BL	BL
(292)	Golden metal(pin, connect socket, main PCB, Smart phone)	BL	BL	BL	BL	---

Bay Area Compliance Laboratories Corp. (Shenzhen)

5/F. (B-West), 6&7/F., The 3rd Phase of Wanli Industrial Building D, Shihua Road, Fubao Community, Fubao Subdistrict, Futian District, Shenzhen, Guangdong, China

QB-CH-R001 (V1.0)

Tel: +86-755-33320018 Fax: +86-755-33320008

TEST REPORT

Report No.: 2401T77469E

Date: June 25, 2024

Page 13 of 44

Seq No.	Tested Part(s)	Result				
		Pb	Cd	Hg	Cr	Br
(293)	Black body(huge square IC, main PCB, Smart phone)	BL	BL	BL	BL	BL
(294)	Black body(big square IC, main PCB, Smart phone)	BL	BL	BL	BL	BL
(295)	Black body(middle square IC, main PCB, Smart phone)	BL	BL	BL	BL	BL
(296)	Black body(small square IC, main PCB, Smart phone)	BL	BL	BL	BL	BL
(297)	Black body(big rectangle IC, main PCB, Smart phone)	BL	BL	BL	BL	BL
(298)	Black body(small rectangle IC, main PCB, Smart phone)	BL	BL	BL	BL	BL
(299)	Black body(big mirror surface IC, main PCB, Smart phone)	BL	BL	BL	BL	BL
(300)	Black body(middle mirror surface IC, main PCB, Smart phone)	BL	BL	BL	BL	BL
(301)	Black body(small mirror surface IC, main PCB, Smart phone)	BL	BL	BL	BL	BL
(302)	Silvery body(SMD crystal oscillator, main PCB, Smart phone)	BL	BL	BL	BL	BL
(303)	Gray body(SMD inductor, main PCB, Smart phone)	BL	BL	BL	BL	BL
(304)	Brown body(SMD capacitor, main PCB, Smart phone)	BL	BL	BL	BL	BL
(305)	White body(SMD EC, main PCB, Smart phone)	BL	BL	BL	BL	BL
(306)	Blue body(SMD EC, main PCB, Smart phone)	BL	BL	BL	BL	BL
(307)	Silvery body(SMD MIC, main PCB, Smart phone)	BL	BL	BL	BL	BL
(308)	Gray body(SMD EC, main PCB, Smart phone)	BL	BL	BL	BL	BL
(309)	Black body(SMD diode, main PCB, Smart phone)	BL	BL	BL	BL	BL
(310)	Black body(SMD inductor, main PCB, Smart phone)	BL	BL	BL	BL	BL
(311)	Black soft plastic(sleeve, photosensitive element, main PCB, Smart phone)	BL	BL	BL	BL	BL
(312)	Black body(photosensitive element, main PCB, Smart phone)	BL	BL	BL	BL	BL
(313)	Black printed beige plastic with coppery metal(main PCB, Smart phone)	BL	BL	BL	BL	BL
(314)	Silvery solder(main PCB, Smart phone)	BL	BL	BL	BL	---
(315)	Silvery metal(pin, main PCB, Smart phone)	BL	BL	BL	BL	---
(316)	Black plastic with adhesive(side button, main PCB, Smart phone)	BL	BL	BL	BL	BL
(317)	Shivery metal(clips, side button, main PCB, Smart phone)	BL	BL	BL	BL	---
(318)	White printed black/brown plastic with coppery metal(FPC, side button, main PCB, Smart phone)	BL	BL	BL	BL	BL
(319)	Silvery metal(stiffening plate, FPC, side button, main PCB, Smart phone)	BL	BL	BL	BL	---
(320)	Black plastic(front cover, Smart phone)	BL	BL	BL	BL	BL
(321)	Silvery metal(front cover, Smart phone)	BL	BL	BL	BL	---
(322)	Coppery metal(nut, front cover, Smart phone, semi-product)	BL	BL	BL	BL	---

TEST REPORT

Report No.: 2401T77469E

Date: June 25, 2024

Page 14 of 44

Seq No.	Tested Part(s)	Result				
		Pb	Cd	Hg	Cr	Br
(323)	Black/silvery plastic with adhesive(sticker, front cover, Smart phone)	BL	BL	BL	BL	BL
(324)	Silvery double faced adhesive tape(sticker, front cover, Smart phone)	BL	BL	BL	BL	BL
(325)	Clear double faced adhesive tape(sticker, front cover, Smart phone)	BL	BL	BL	BL	BL
(326)	Coppery metal(slice, front cover, Smart phone)	BL	BL	BL	BL	---
(327)	Pale golden metal(slice, front cover, Smart phone)	BL	BL	BL	BL	---
(328)	Coppery metal with adhesive(sticker, screen, Smart phone)	BL	BL	BL	BL	BL
(329)	Yellow clear plastic with adhesive(sticker, screen, Smart phone)	BL	BL	BL	BL	BL
(330)	Black body(SMD diode, FPC, screen, Smart phone)	BL	BL	BL	BL	BL
(331)	Black body(SMD resistor, FPC, screen, Smart phone)	BL	BL	BL	BL	BL
(332)	Brown body(SMD capacitor, FPC, screen, Smart phone)	BL	BL	BL	BL	BL
(333)	Black printed brown plastic with coppery metal(FPC, screen, Smart phone)	BL	BL	BL	BL	BL
(334)	Silvery solder(FPC, screen, Smart phone)	BL	BL	BL	BL	---
(335)	Black plastic(pin holder, socket, FPC, screen, Smart phone)	BL	BL	BL	BL	BL
(336)	Golden metal(pin, socket, FPC, screen, Smart phone)	BL	BL	BL	BL	---
(337)	Silvery metal(base, screen, Smart phone)	BL	BL	BL	BL	---
(338)	Gray plastic(frame, screen, Smart phone)	BL	BL	BL	BL	BL
(339)	Silvery plastic(film, screen, Smart phone)	BL	BL	BL	BL	BL
(340)	Clear plastic(film, screen, Smart phone)	BL	BL	BL	BL	BL
(341)	White plastic(film, screen, Smart phone)	BL	BL	BL	BL	BL
(342)	Silvery silvery plastic(film, screen, Smart phone)	BL	BL	BL	BL	BL
(343)	Iridescent clear plastic(film, screen, Smart phone)	BL	BL	BL	BL	BL
(344)	White body(LED, screen, Smart phone)	BL	BL	BL	BL	BL
(345)	White printed brown plastic with coppery metal(LED FPC, screen, Smart phone)	BL	BL	BL	BL	BL
(346)	Black plastic with adhesive(tape, LED FPC, screen, Smart phone)	BL	BL	BL	BL	BL
(347)	Silvery plastic with adhesive(polaroid, LED FPC, screen, Smart phone)	BL	BL	BL	BL	BL
(348)	Black glass with liquid crystal(screen, Smart phone)	BL	BL	BL	BL	BL
(349)	Clear plastic with adhesive(tape, battery, Smart phone)	BL	BL	BL	BL	BL
(350)	Black plastic with adhesive(tape, battery, Smart phone)	BL	BL	BL	BL	BL
(351)	Green plastic with adhesive(tape, battery, Smart phone)	BL	BL	BL	BL	BL
(352)	Black body(big IC, FPC, battery, Smart phone)	BL	BL	BL	BL	BL

TEST REPORT

Report No.: 2401T77469E

Date: June 25, 2024

Page 15 of 44

Seq No.	Tested Part(s)	Result				
		Pb	Cd	Hg	Cr	Br
(353)	Black body(small IC, FPC, battery, Smart phone)	BL	BL	BL	BL	BL
(354)	Black body(SMD resistor, FPC, battery, Smart phone)	BL	BL	BL	BL	BL
(355)	Brown body(SMD capacitor, FPC, battery, Smart phone)	BL	BL	BL	BL	BL
(356)	White printed black plastic with coppery metal(FPC, battery, Smart phone)	BL	BL	BL	BL	BL
(357)	Silvery solder(FPC, battery, Smart phone)	BL	BL	BL	BL	---
(358)	Blue dry glue(FPC, battery, Smart phone)	BL	BL	BL	BL	BL
(359)	Silvery metal(contact chip, FPC, battery, Smart phone)	BL	BL	BL	BL	---
(360)	Black plastic(pin holder, socket, FPC, battery, Smart phone)	BL	BL	BL	BL	BL
(361)	Golden/silvery metal(pin, socket, FPC, battery, Smart phone)	BL	BL	BL	BL	---
(362)*	White/black printed brown plastic with coppery metal(PCB, battery, Smart phone)	BL	BL	BL	BL	X

Note:

--- = Not Applicable.

* = Screening by XRF and detected by chemical method. The test result of chemical method please refer to next pages.

*1 = As claimed by the material declaration submitted by the client, the materials of the sample No. 102 is high melting temperature type solders. And according to RoHS directive 2011/65/EU and its amendments, Lead is exempted in high melting temperature type solders (i.e. lead-based alloys containing 85 % by weight or more lead).

*2 = As claimed by the material declaration submitted by the client, the materials of the sample No. 38 is ceramic. And according to RoHS directive 2011/65/EU and its amendments, Lead is exempted in electronic ceramic parts (e.g. piezoelectronic devices).

TEST REPORT

Report No.: 2401T77469E

Date: June 25, 2024

Page 16 of 44

Remark:

i Result were obtained by XRF for primary screening, and further chemical testing by ICP (for Cd, Pb, Hg), UV-Vis (for Cr(VI)) and GC-MS (for PBBs, PBDEs) are recommended to be performed, if the concentration exceeds the below warning value according to IEC62321-3-1:2013.

Element	Unit	Polymers	Metal	Composite Material
Cd	mg/kg	BL≤70-3σ<X <130+3σ≤OL	BL≤70-3σ<X <130+3σ≤OL	BL≤50-3σ<X <150+3σ≤OL
Pb	mg/kg	BL≤700-3σ<X <1300+3σ≤OL	BL≤700-3σ<X <1300+3σ≤OL	BL≤500-3σ<X <1500+3σ≤OL
Hg	mg/kg	BL≤700-3σ<X <1300+3σ≤OL	BL≤700-3σ<X <1300+3σ≤OL	BL≤500-3σ<X <1500+3σ≤OL
Cr	mg/kg	BL≤700-3σ<X	BL≤700-3σ<X	BL≤500-3σ<X
Br	mg/kg	BL≤300-3σ<X	--	BL≤250-3σ<X

Note:

BL = Below Limit

OL = Over Limit

IN/X = Inconclusive (questionable, need further chemical analysis)

ii The XRF screening test for RoHS elements – The reading may be different to the actual content in the sample be of non-uniformity composition.

iii The maximum permissible limit is quoted from the RoHS directive 2011/65/EU:

RoHS Restricted Substances	Maximum Concentration Value (mg/kg) (by weight in homogenous materials)
Cadmium (Cd)	100
Lead (Pb)	1000
Mercury (Hg)	1000
Hexavalent Chromium (Cr(VI))	1000
Polybrominated biphenyls (PBBs)	1000
Polybrominated diphenylethers (PBDEs)	1000

Disclaimers:

This XRF Screening report is for reference purposes only. The applicant shall make its/his/her own judgment as to whether the information provided in this XRF screening report is sufficient for its/his/her purposes.

The result shown in this XRF screening report will differ based on various factors, including but not limited to, the sample size, thickness, area, surface flatness, equipment parameters and matrix effect (e.g. plastic, rubber, metal, glass, ceramic etc.). Further wet chemical pre-treatment with relevant chemical equipment analysis are required to obtain quantitative data.

TEST REPORT

Report No.: 2401T77469E

Date: June 25, 2024

Page 17 of 44

A.2 Wet Chemical Testing

A.2.1 Chromium VI (Cr(VI)) Content

Chromium VI (Cr(VI)) Content(In Non-metal)

Test method: IEC 62321-7-2:2017

Item	Unit	MDL	Result						Limit
			(38)						
hexavalent chromium(Cr(VI))	mg/kg	10	N.D.						1000
Conclusion	/	/	Pass						/

A.2.2 PBBs & PBDEs content

Test method: IEC 62321-6:2015

Item	Unit	MDL	Result						Limit
			(25)	(29)	(47)	(78)	(115)	(362)	
Monobromobiphenyl (MonoBB)	mg/kg	50	N.D.	N.D.	N.D.	N.D.	N.D.	N.D.	-
Dibromobiphenyl(DiBB)	mg/kg	50	N.D.	N.D.	N.D.	N.D.	N.D.	N.D.	-
Tribromobiphenyl(TriBB)	mg/kg	50	N.D.	N.D.	N.D.	N.D.	N.D.	N.D.	-
Tetrabromobiphenyl(TetraBB)	mg/kg	50	N.D.	N.D.	N.D.	N.D.	N.D.	N.D.	-
Pentabromobiphenyl(PentaBB)	mg/kg	50	N.D.	N.D.	N.D.	N.D.	N.D.	N.D.	-
Hexabromobiphenyl(HexaBB)	mg/kg	50	N.D.	N.D.	N.D.	N.D.	N.D.	N.D.	-
Heptabromobiphenyl (HeptaBB)	mg/kg	50	N.D.	N.D.	N.D.	N.D.	N.D.	N.D.	-
Octabromobiphenyl(OctaBB)	mg/kg	50	N.D.	N.D.	N.D.	N.D.	N.D.	N.D.	-
Nonabromobiphenyl(NonaBB)	mg/kg	50	N.D.	N.D.	N.D.	N.D.	N.D.	N.D.	-
Decabromobiphenyl(DecaBB)	mg/kg	50	N.D.	N.D.	N.D.	N.D.	N.D.	N.D.	-
Monobromodiphenyl ether (MonoBDE)	mg/kg	50	N.D.	N.D.	N.D.	N.D.	N.D.	N.D.	-
Dibromodiphenyl ether (DiBDE)	mg/kg	50	N.D.	N.D.	N.D.	N.D.	N.D.	N.D.	-
Tribromodiphenyl ether (TriBDE)	mg/kg	50	N.D.	N.D.	N.D.	N.D.	N.D.	N.D.	-
Tetrabromodiphenyl ether (TetraBDE)	mg/kg	50	N.D.	N.D.	N.D.	N.D.	N.D.	N.D.	-
Pentabromodiphenyl ether (PentaBDE)	mg/kg	50	N.D.	N.D.	N.D.	N.D.	N.D.	N.D.	-
Hexabromodiphenyl ether (HexaBDE)	mg/kg	50	N.D.	N.D.	N.D.	N.D.	N.D.	N.D.	-

TEST REPORT

Report No.: 2401T77469E

Date: June 25, 2024

Page 18 of 44

Item	Unit	MDL	Result						Limit
			(25)	(29)	(47)	(78)	(115)	(362)	
Heptabromodiphenyl ether (HeptaBDE)	mg/kg	50	N.D.	N.D.	N.D.	N.D.	N.D.	N.D.	-
Octabromodiphenyl ether (OctaBDE)	mg/kg	50	N.D.	N.D.	N.D.	N.D.	N.D.	N.D.	-
Nonabromodiphenyl ether (NonaBDE)	mg/kg	50	N.D.	N.D.	N.D.	N.D.	N.D.	N.D.	-
Decabromodiphenyl ether (DecaBDE)	mg/kg	50	N.D.	N.D.	N.D.	N.D.	N.D.	N.D.	-
sum of MonoBDE, DiBDE, TriBDE, TetraBDE, PentaBDE, HexaBDE, HeptaBDE, OctaBDE, NonaBDE, DecaBDE	mg/kg	-	/	/	/	/	/	/	1000
sum of MonoBB, DiBB, TriBB, TetraBB, PentaBB, HexaBB, HeptaBB, OctaBB, NonaBB, DecaBB	mg/kg	-	/	/	/	/	/	/	1000
Conclusion	/	/	Pass	Pass	Pass	Pass	Pass	Pass	/

A.3 Phthalates(DBP, BBP, DEHP, DIBP)content

Test method: IEC 62321-8:2017

Item	Unit	MDL	Result						Limit
			(1)	(3)+(4)+(7)	(9)+(25)+(29)	(11)	(12)+(13)+(14)	(15)	
Dibutyl Phthalate(DBP)	mg/kg	30	N.D.	N.D.	N.D.	N.D.	N.D.	N.D.	1000
Benzyl Butyl Phthalate(BBP)	mg/kg	30	N.D.	N.D.	N.D.	N.D.	N.D.	N.D.	1000
Bis-(2-ethylhexyl) Phthalate (DEHP)	mg/kg	30	N.D.	N.D.	N.D.	N.D.	37	39	1000
Diisobutyl phthalate(DIBP)	mg/kg	30	N.D.	N.D.	N.D.	N.D.	N.D.	N.D.	1000
Conclusion	/	/	Pass	Pass	Pass	Pass	Pass	Pass	/

TEST REPORT

Report No.: 2401T77469E

Date: June 25, 2024

Page 19 of 44

Item	Unit	MDL	Result						Limit
			(16)	(18)+(27)+ (42)	(20)+(21)+ (28)	(24)+(41)+ (44)	(32)+(33)+ (34)	(36)+(67)+ (92)	
Dibutyl Phthalate(DBP)	mg/kg	30	N.D.	N.D.	N.D.	N.D.	N.D.	N.D.	1000
Benzyl Butyl Phthalate(BBP)	mg/kg	30	N.D.	N.D.	N.D.	N.D.	N.D.	N.D.	1000
Bis-(2-ethylhexyl) Phthalate (DEHP)	mg/kg	30	34	N.D.	N.D.	N.D.	N.D.	N.D.	1000
Diisobutyl phthalate(DIBP)	mg/kg	30	N.D.	N.D.	N.D.	N.D.	N.D.	N.D.	1000
Conclusion	/	/	Pass	Pass	Pass	Pass	Pass	Pass	/

Item	Unit	MDL	Result						Limit
			(39)+(47)+ (78)	(43)+(156)	(45)+(121)+ (218)	(46)+(50)+ (70)	(55)+(56)+ (57)	(58)+(59)+ (60)	
Dibutyl Phthalate(DBP)	mg/kg	30	N.D.	N.D.	N.D.	N.D.	N.D.	N.D.	1000
Benzyl Butyl Phthalate(BBP)	mg/kg	30	N.D.	N.D.	N.D.	N.D.	N.D.	N.D.	1000
Bis-(2-ethylhexyl) Phthalate (DEHP)	mg/kg	30	N.D.	N.D.	N.D.	N.D.	55	N.D.	1000
Diisobutyl phthalate(DIBP)	mg/kg	30	N.D.	N.D.	N.D.	N.D.	N.D.	N.D.	1000
Conclusion	/	/	Pass	Pass	Pass	Pass	Pass	Pass	/

Item	Unit	MDL	Result						Limit
			(61)+(62)+ (98)	(64)+(68)+ (73)	(65)+(124)	(71)+(137)+ (157)	(75)+(79)+ (80)	(81)+(83)+ (89)	
Dibutyl Phthalate(DBP)	mg/kg	30	N.D.	N.D.	N.D.	N.D.	N.D.	N.D.	1000
Benzyl Butyl Phthalate(BBP)	mg/kg	30	N.D.	N.D.	N.D.	N.D.	N.D.	N.D.	1000
Bis-(2-ethylhexyl) Phthalate (DEHP)	mg/kg	30	N.D.	N.D.	N.D.	N.D.	N.D.	N.D.	1000
Diisobutyl phthalate(DIBP)	mg/kg	30	N.D.	N.D.	N.D.	N.D.	N.D.	N.D.	1000
Conclusion	/	/	Pass	Pass	Pass	Pass	Pass	Pass	/

Item	Unit	MDL	Result						Limit
			(82)+(84)+ (85)	(86)+(88)+ (104)	(93)+(151)+ (224)	(96)+(101)+ (123)	(99)+(100)+ (138)	(105)+(106)+ (107)	
Dibutyl Phthalate(DBP)	mg/kg	30	N.D.	N.D.	N.D.	N.D.	N.D.	N.D.	1000
Benzyl Butyl Phthalate(BBP)	mg/kg	30	N.D.	N.D.	N.D.	N.D.	N.D.	N.D.	1000
Bis-(2-ethylhexyl) Phthalate (DEHP)	mg/kg	30	N.D.	N.D.	N.D.	N.D.	N.D.	N.D.	1000
Diisobutyl phthalate(DIBP)	mg/kg	30	N.D.	N.D.	N.D.	N.D.	N.D.	N.D.	1000
Conclusion	/	/	Pass	Pass	Pass	Pass	Pass	Pass	/

Bay Area Compliance Laboratories Corp. (Shenzhen)

5/F. (B-West), 6&7/F., The 3rd Phase of Wanli Industrial Building D, Shihua Road, Fubao Community, Fubao Subdistrict, Futian District, Shenzhen, Guangdong, China

QB-CH-R001 (V1.0)

Tel: +86-755-33320018 Fax: +86-755-33320008

TEST REPORT

Report No.: 2401T77469E

Date: June 25, 2024

Page 20 of 44

Item	Unit	MDL	Result						Limit
			(108)+(109) +(130)	(115)+(231) +(270)	(118)+(127) +(132)	(120)+(350)	(125)+(126)	(131)+(134) +(183)	
Dibutyl Phthalate(DBP)	mg/kg	30	N.D.	N.D.	N.D.	N.D.	N.D.	N.D.	1000
Benzyl Butyl Phthalate(BBP)	mg/kg	30	N.D.	N.D.	N.D.	N.D.	N.D.	N.D.	1000
Bis-(2-ethylhexyl) Phthalate (DEHP)	mg/kg	30	N.D.	N.D.	N.D.	N.D.	N.D.	N.D.	1000
Diisobutyl phthalate(DIBP)	mg/kg	30	N.D.	N.D.	N.D.	N.D.	N.D.	N.D.	1000
Conclusion	/	/	Pass	Pass	Pass	Pass	Pass	Pass	/

Item	Unit	MDL	Result						Limit
			(135)+(170) +(180)	(136)+(143) +(145)	(139)+(153) +(154)	(152)+(160) +(163)	(167)+(168) +(169)	(175)+(176) +(177)	
Dibutyl Phthalate(DBP)	mg/kg	30	N.D.	N.D.	N.D.	N.D.	N.D.	N.D.	1000
Benzyl Butyl Phthalate(BBP)	mg/kg	30	N.D.	N.D.	N.D.	N.D.	N.D.	N.D.	1000
Bis-(2-ethylhexyl) Phthalate (DEHP)	mg/kg	30	N.D.	N.D.	N.D.	N.D.	N.D.	N.D.	1000
Diisobutyl phthalate(DIBP)	mg/kg	30	N.D.	N.D.	N.D.	N.D.	N.D.	N.D.	1000
Conclusion	/	/	Pass	Pass	Pass	Pass	Pass	Pass	/

Item	Unit	MDL	Result						Limit
			(178)+(220) +(246)	(182)+(201) +(203)	(184)+(191) +(192)	(193)+(194) +(196)	(197)+(198) +(199)	(204)+(215) +(223)	
Dibutyl Phthalate(DBP)	mg/kg	30	N.D.	N.D.	N.D.	N.D.	N.D.	N.D.	1000
Benzyl Butyl Phthalate(BBP)	mg/kg	30	N.D.	N.D.	N.D.	N.D.	N.D.	N.D.	1000
Bis-(2-ethylhexyl) Phthalate (DEHP)	mg/kg	30	N.D.	N.D.	N.D.	N.D.	N.D.	N.D.	1000
Diisobutyl phthalate(DIBP)	mg/kg	30	N.D.	N.D.	N.D.	N.D.	N.D.	N.D.	1000
Conclusion	/	/	Pass	Pass	Pass	Pass	Pass	Pass	/

Item	Unit	MDL	Result						Limit
			(205)+(208) +(210)	(211)+(216) +(230)	(213)+(263) +(264)	(221)+(358)	(232)+(235) +(318)	(233)+(236) +(239)	
Dibutyl Phthalate(DBP)	mg/kg	30	N.D.	N.D.	N.D.	N.D.	N.D.	N.D.	1000
Benzyl Butyl Phthalate(BBP)	mg/kg	30	N.D.	N.D.	N.D.	N.D.	N.D.	N.D.	1000
Bis-(2-ethylhexyl) Phthalate (DEHP)	mg/kg	30	N.D.	N.D.	N.D.	N.D.	N.D.	N.D.	1000
Diisobutyl phthalate(DIBP)	mg/kg	30	N.D.	N.D.	N.D.	N.D.	N.D.	N.D.	1000
Conclusion	/	/	Pass	Pass	Pass	Pass	Pass	Pass	/

Bay Area Compliance Laboratories Corp. (Shenzhen)

5/F. (B-West), 6&7/F., The 3rd Phase of Wanli Industrial Building D, Shihua Road, Fubao Community, Fubao Subdistrict, Futian District, Shenzhen, Guangdong, China

QB-CH-R001 (V1.0)

Tel: +86-755-33320018 Fax: +86-755-33320008

TEST REPORT

Report No.: 2401T77469E

Date: June 25, 2024

Page 21 of 44

Item	Unit	MDL	Result						Limit
			(241)+(242) +(244)	(251)+(254) +(256)	(258)+(261) +(277)	(265)+(266) +(267)	(268)+(293) +(294)	(275)+(328)	
Dibutyl Phthalate(DBP)	mg/kg	30	N.D.	N.D.	N.D.	N.D.	N.D.	N.D.	1000
Benzyl Butyl Phthalate(BBP)	mg/kg	30	N.D.	N.D.	N.D.	N.D.	N.D.	N.D.	1000
Bis-(2-ethylhexyl) Phthalate (DEHP)	mg/kg	30	N.D.	N.D.	N.D.	N.D.	N.D.	N.D.	1000
Diisobutyl phthalate(DIBP)	mg/kg	30	N.D.	N.D.	N.D.	N.D.	N.D.	N.D.	1000
Conclusion	/	/	Pass	Pass	Pass	Pass	Pass	Pass	/

Item	Unit	MDL	Result						Limit
			(279)+(281) +(283)	(285)+(288) +(291)	(295)+(296) +(297)	(298)+(299) +(300)	(301)+(302) +(305)	(306)+(307) +(308)	
Dibutyl Phthalate(DBP)	mg/kg	30	N.D.	N.D.	N.D.	N.D.	N.D.	N.D.	1000
Benzyl Butyl Phthalate(BBP)	mg/kg	30	N.D.	N.D.	N.D.	N.D.	N.D.	N.D.	1000
Bis-(2-ethylhexyl) Phthalate (DEHP)	mg/kg	30	N.D.	N.D.	N.D.	N.D.	N.D.	N.D.	1000
Diisobutyl phthalate(DIBP)	mg/kg	30	N.D.	N.D.	N.D.	N.D.	N.D.	N.D.	1000
Conclusion	/	/	Pass	Pass	Pass	Pass	Pass	Pass	/

Item	Unit	MDL	Result						Limit
			(309)+(312) +(330)	(311)	(313)+(356) +(362)	(316)+(320) +(335)	(323)+(324) +(325)	(329)+(349) +(351)	
Dibutyl Phthalate(DBP)	mg/kg	30	N.D.	N.D.	N.D.	N.D.	N.D.	N.D.	1000
Benzyl Butyl Phthalate(BBP)	mg/kg	30	N.D.	N.D.	N.D.	N.D.	N.D.	N.D.	1000
Bis-(2-ethylhexyl) Phthalate (DEHP)	mg/kg	30	N.D.	N.D.	N.D.	N.D.	N.D.	N.D.	1000
Diisobutyl phthalate(DIBP)	mg/kg	30	N.D.	N.D.	N.D.	N.D.	N.D.	N.D.	1000
Conclusion	/	/	Pass	Pass	Pass	Pass	Pass	Pass	/

Item	Unit	MDL	Result						Limit
			(333)+(345)	(338)+(339) +(340)	(341)+(342) +(343)	(344)+(352) +(353)	(346)+(347) +(360)	(348)	
Dibutyl Phthalate(DBP)	mg/kg	30	N.D.	N.D.	N.D.	N.D.	N.D.	N.D.	1000
Benzyl Butyl Phthalate(BBP)	mg/kg	30	N.D.	N.D.	N.D.	N.D.	N.D.	N.D.	1000
Bis-(2-ethylhexyl) Phthalate (DEHP)	mg/kg	30	N.D.	N.D.	N.D.	N.D.	N.D.	N.D.	1000
Diisobutyl phthalate(DIBP)	mg/kg	30	N.D.	N.D.	N.D.	N.D.	N.D.	N.D.	1000
Conclusion	/	/	Pass	Pass	Pass	Pass	Pass	Pass	/

Bay Area Compliance Laboratories Corp. (Shenzhen)

5/F. (B-West), 6&7/F., The 3rd Phase of Wanli Industrial Building D, Shihua Road, Fubao Community, Fubao Subdistrict, Futian District, Shenzhen, Guangdong, China

QB-CH-R001 (V1.0)

Tel: +86-755-33320018 Fax: +86-755-33320008



TEST REPORT

Report No.: 2401T77469E

Date: June 25, 2024

Page 22 of 44

Note:

- N.D.= Not Detected or less than MDL
- MDL = Method Detection Limit
- "+" = Composite testing.
- The Result less than MDL are not taken into account while calculating the sum contents.

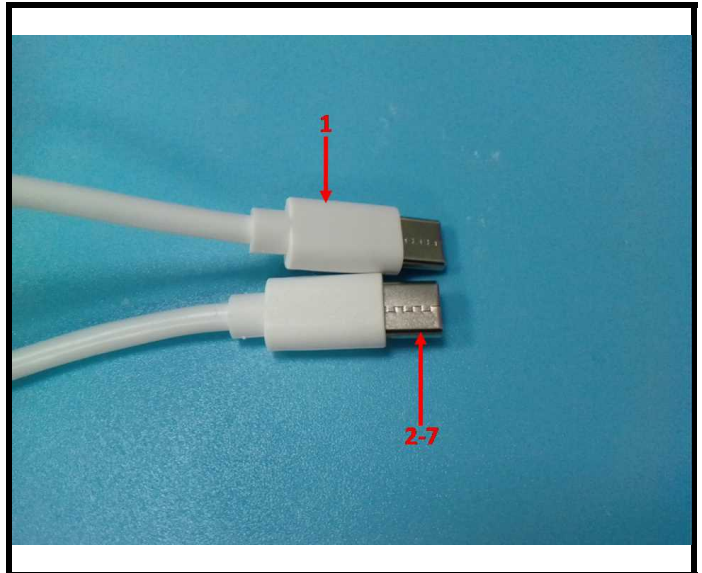
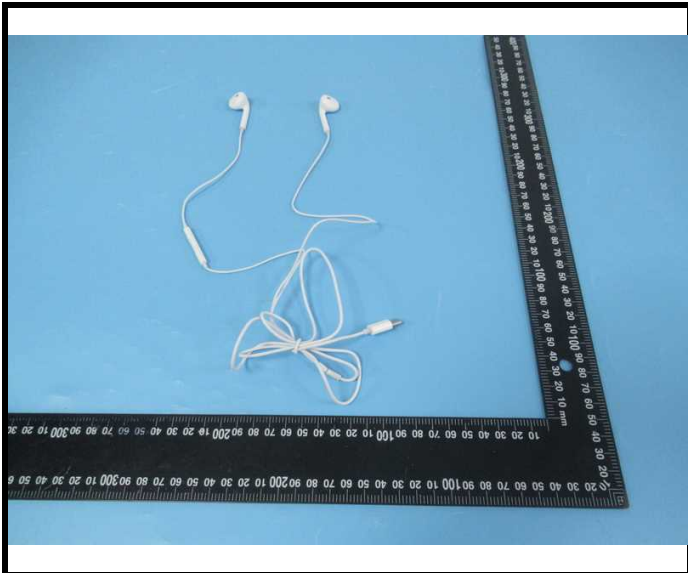
TEST REPORT

Report No.: 2401T77469E

Date: June 25, 2024

Page 23 of 44

Photograph of Sample

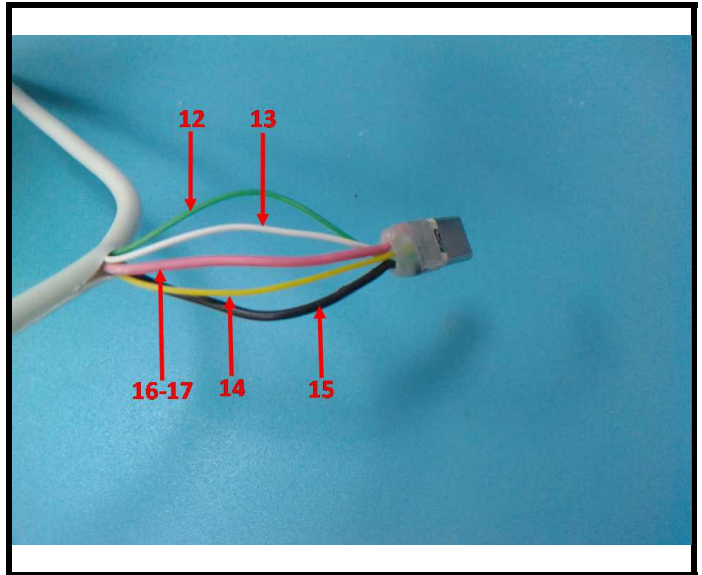
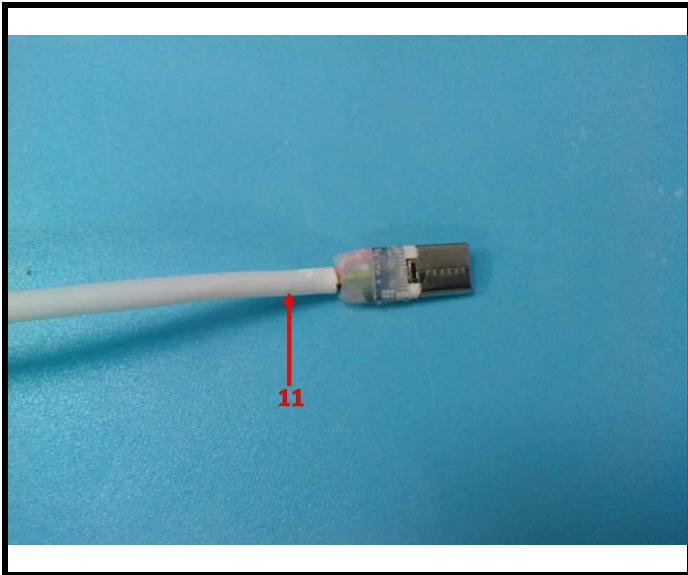
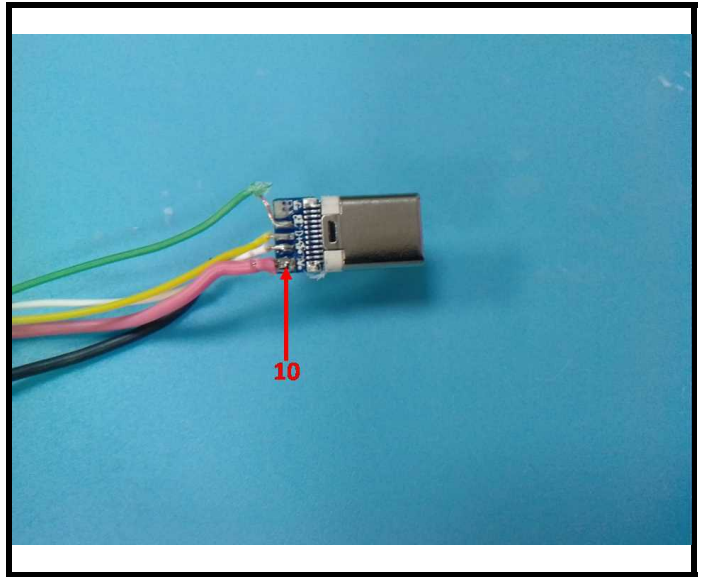
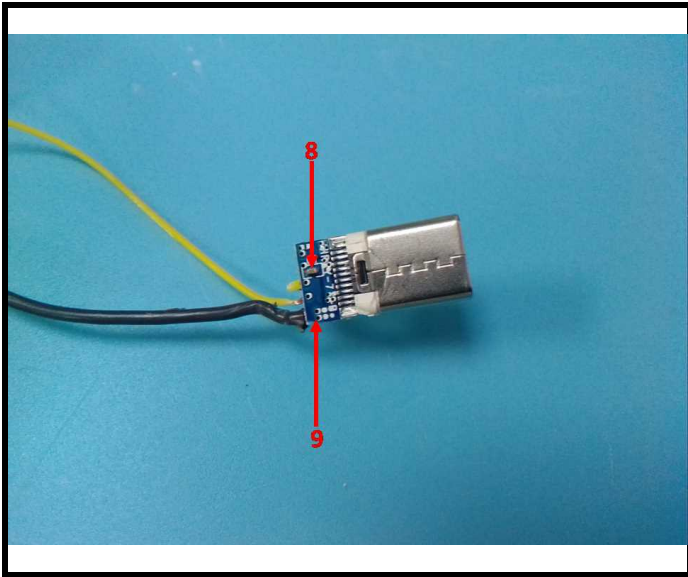


TEST REPORT

Report No.: 2401T77469E

Date: June 25, 2024

Page 24 of 44

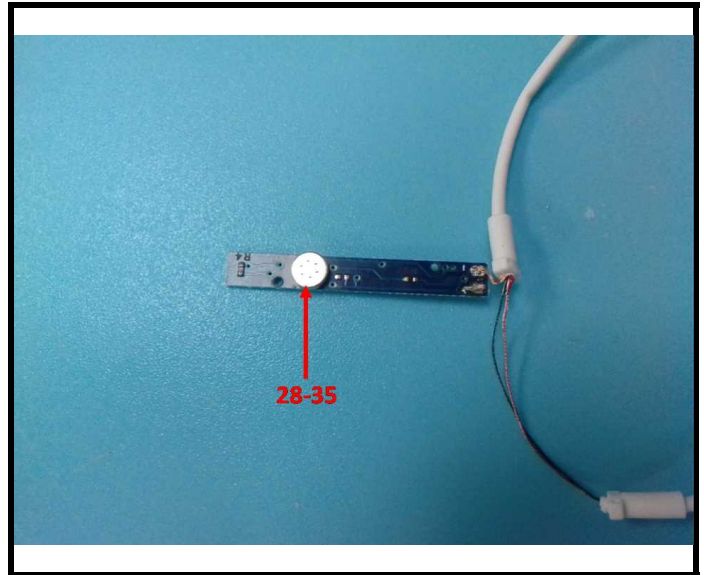
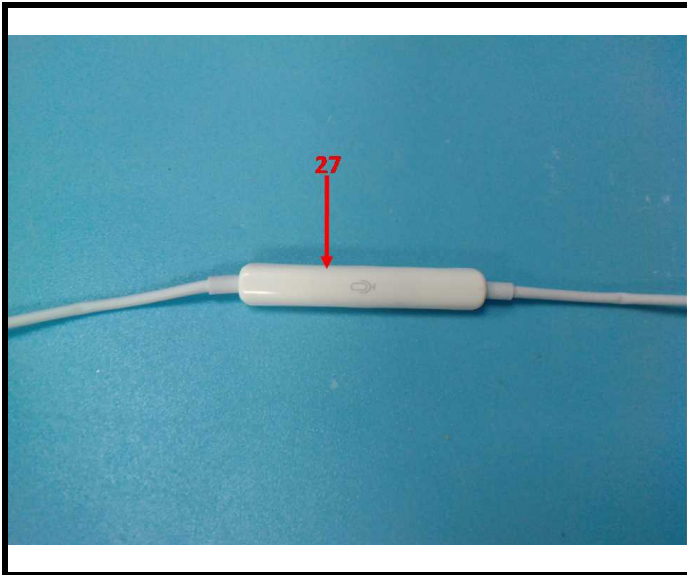
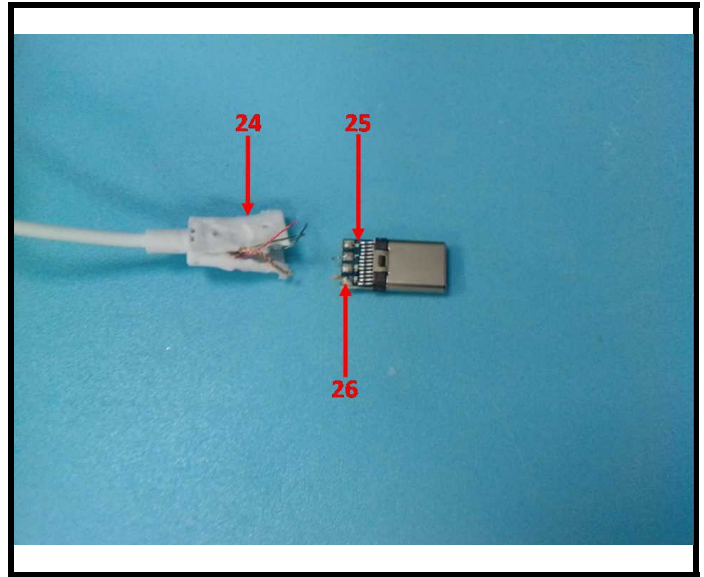
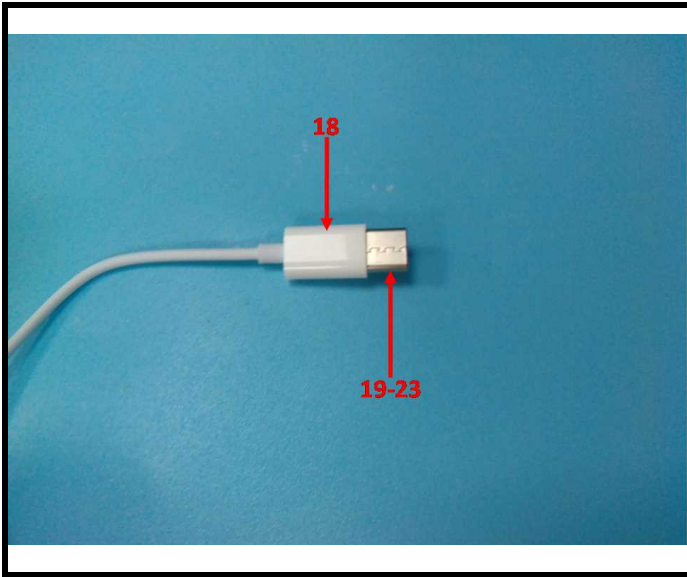


TEST REPORT

Report No.: 2401T77469E

Date: June 25, 2024

Page 25 of 44

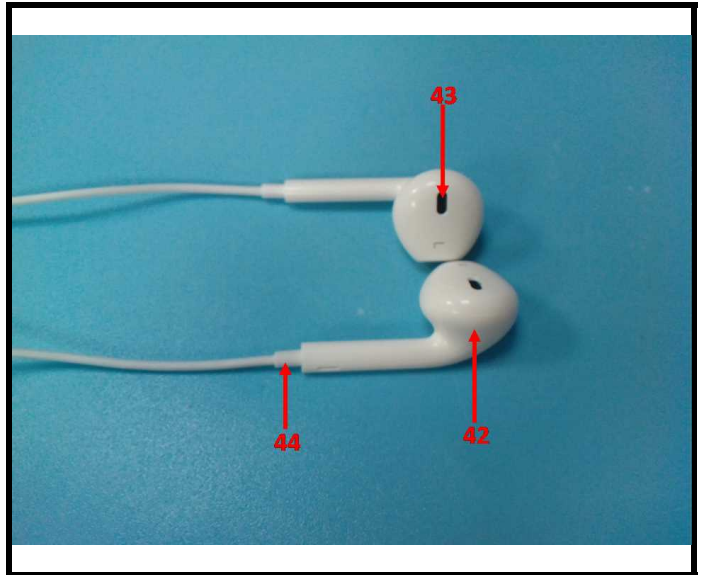
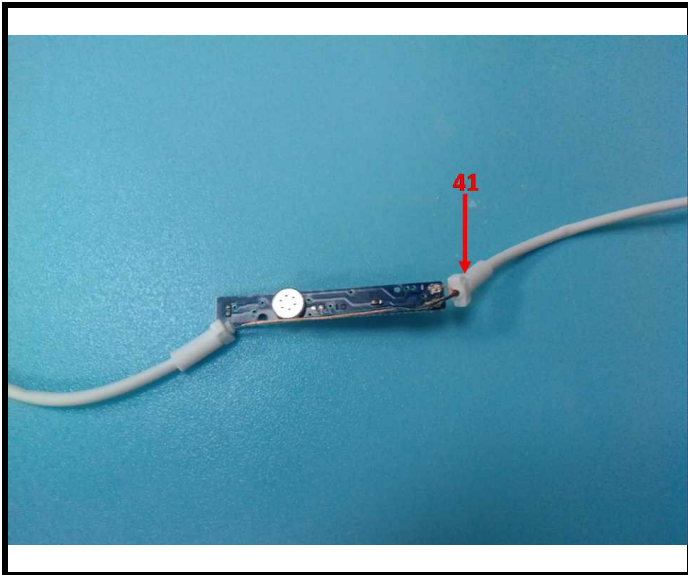
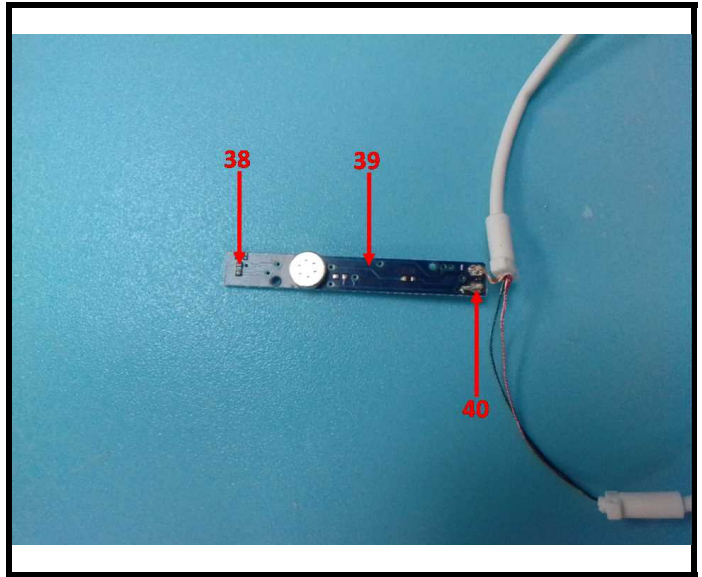
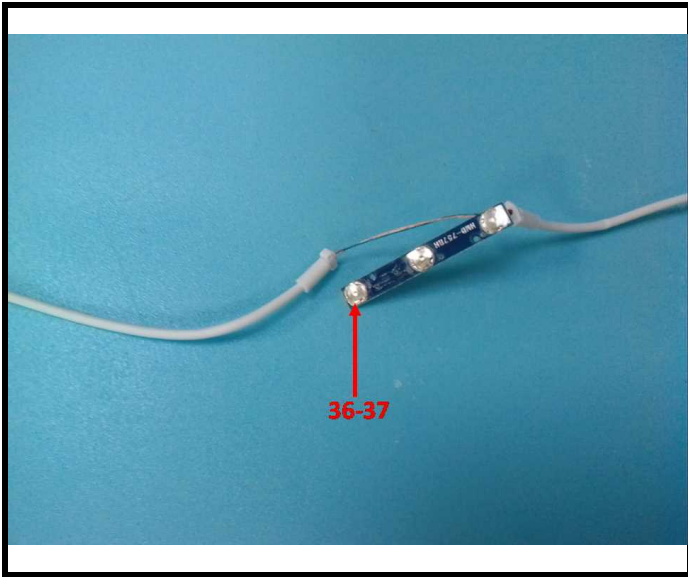


TEST REPORT

Report No.: 2401T77469E

Date: June 25, 2024

Page 26 of 44

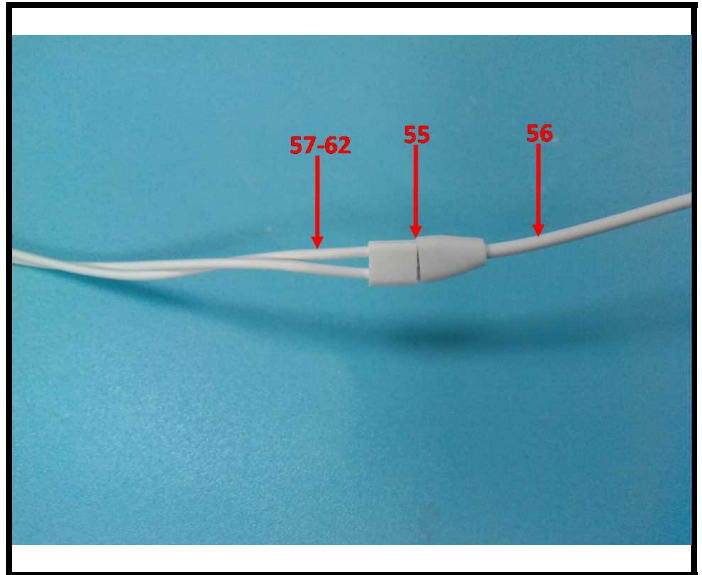
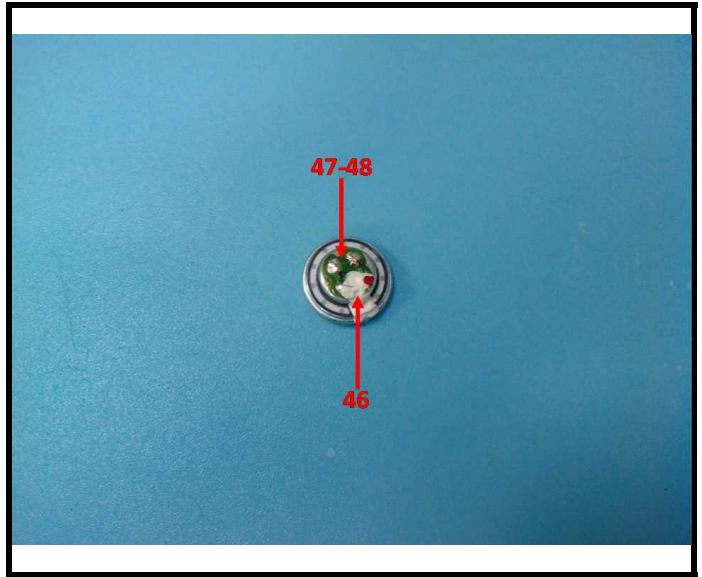
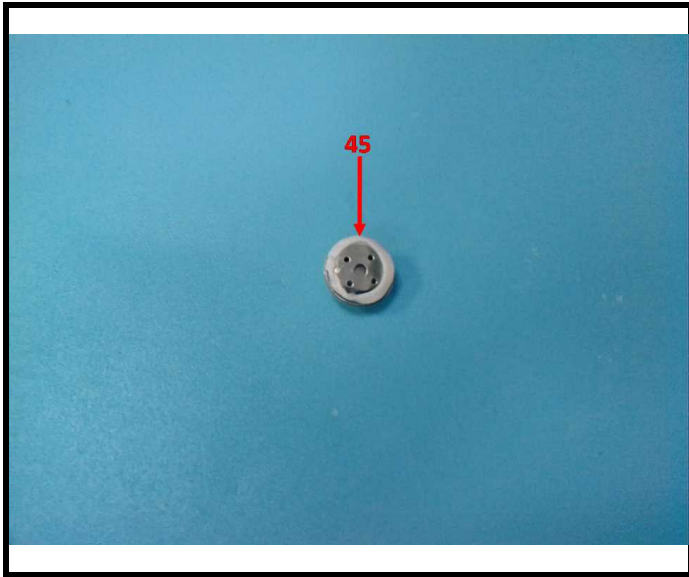


TEST REPORT

Report No.: 2401T77469E

Date: June 25, 2024

Page 27 of 44

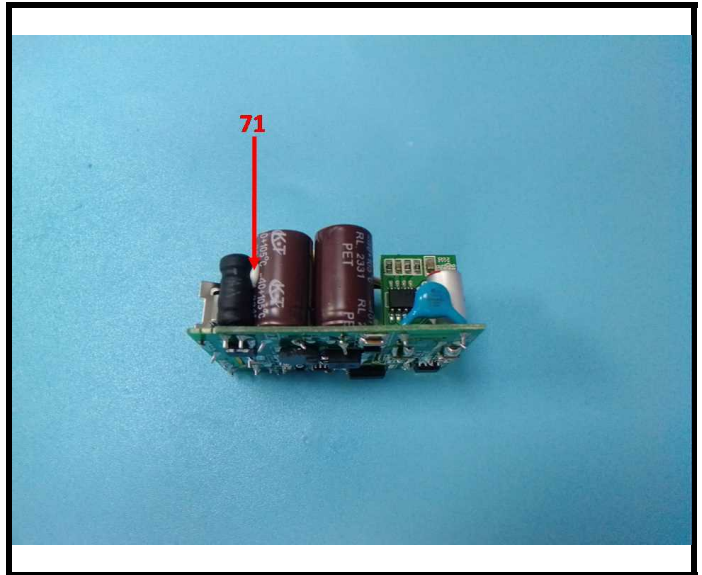
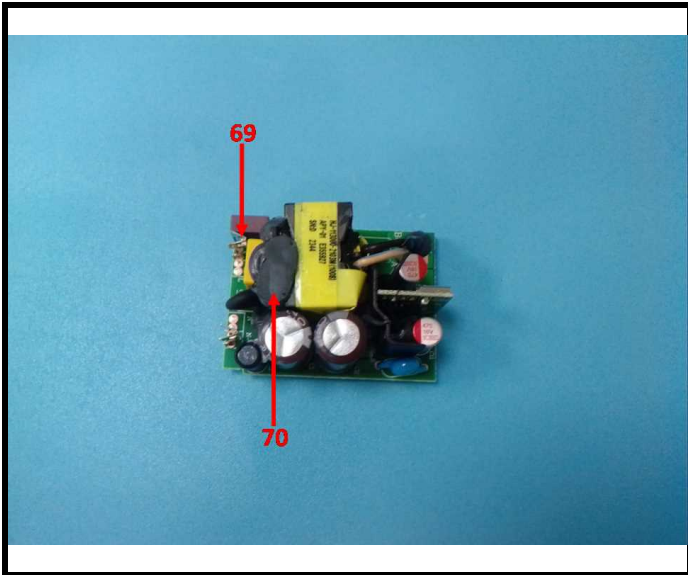
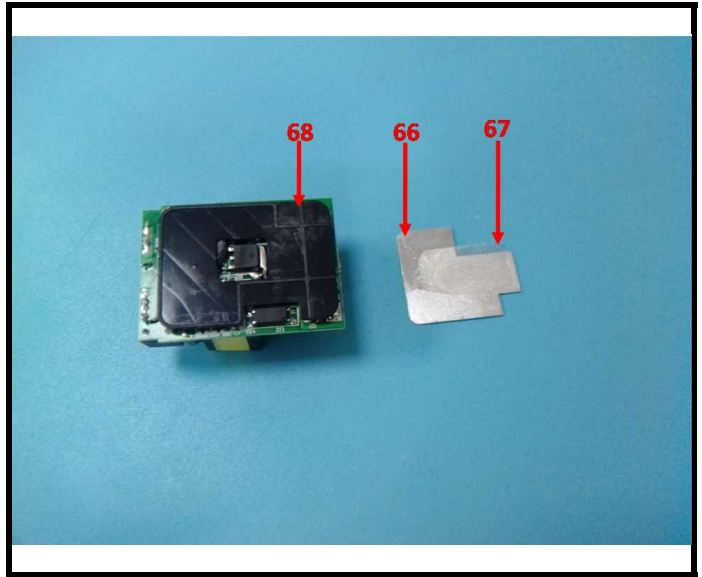
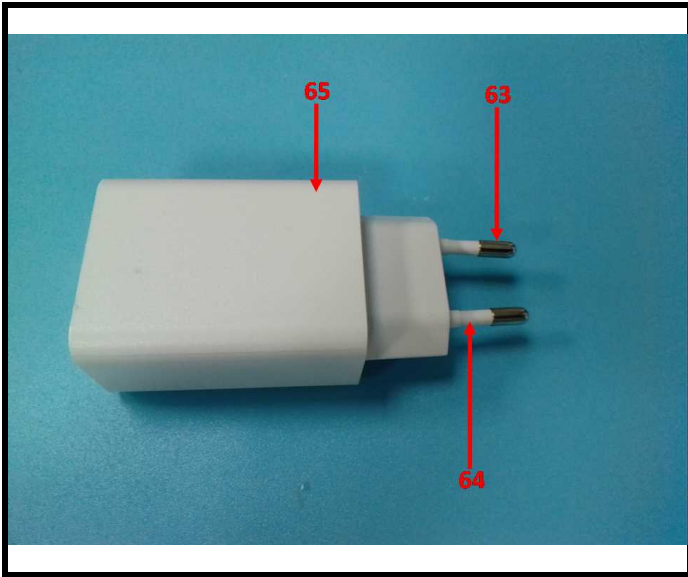


TEST REPORT

Report No.: 2401T77469E

Date: June 25, 2024

Page 28 of 44

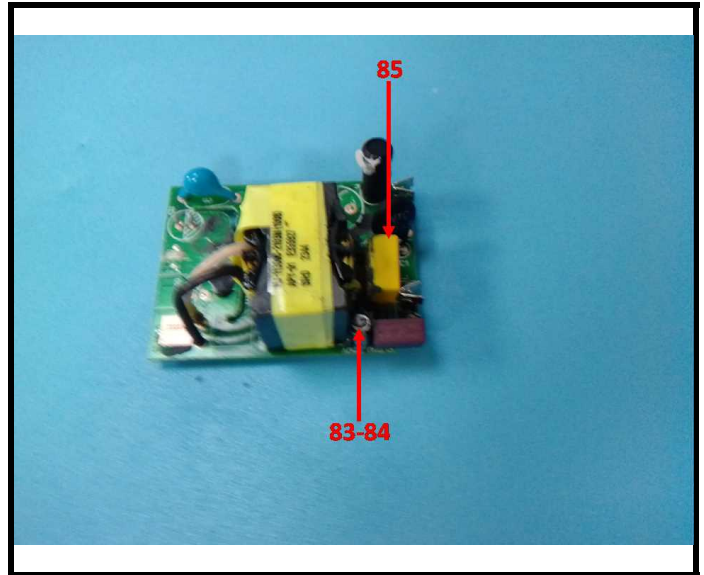
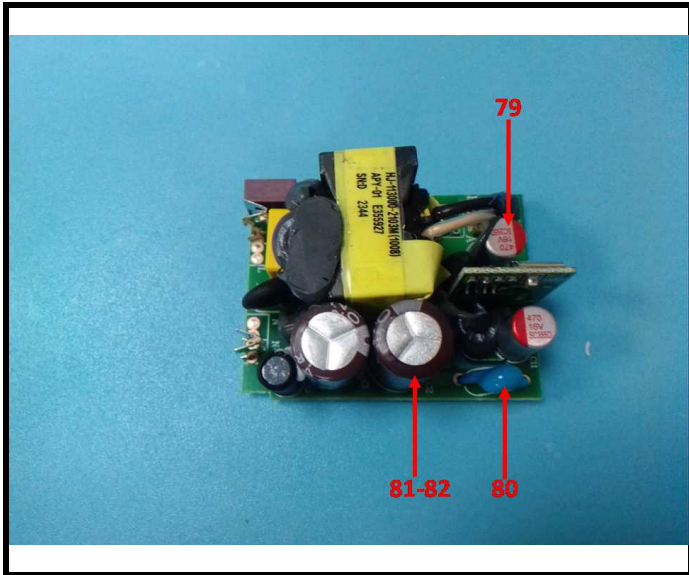
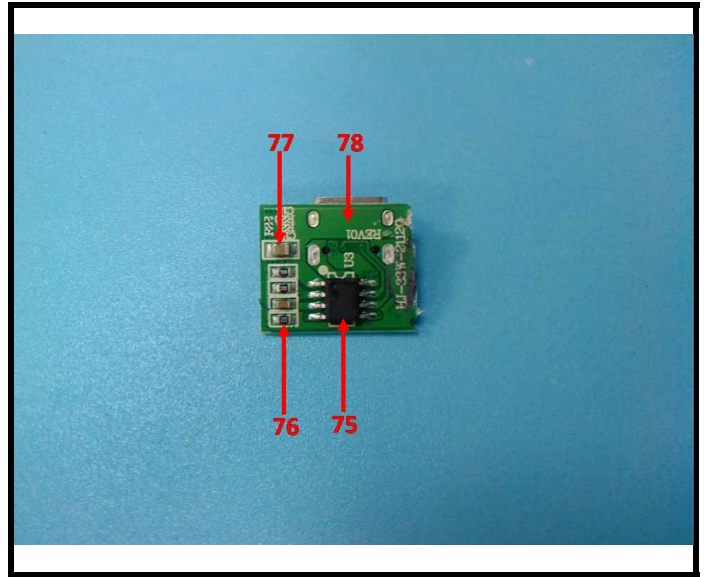
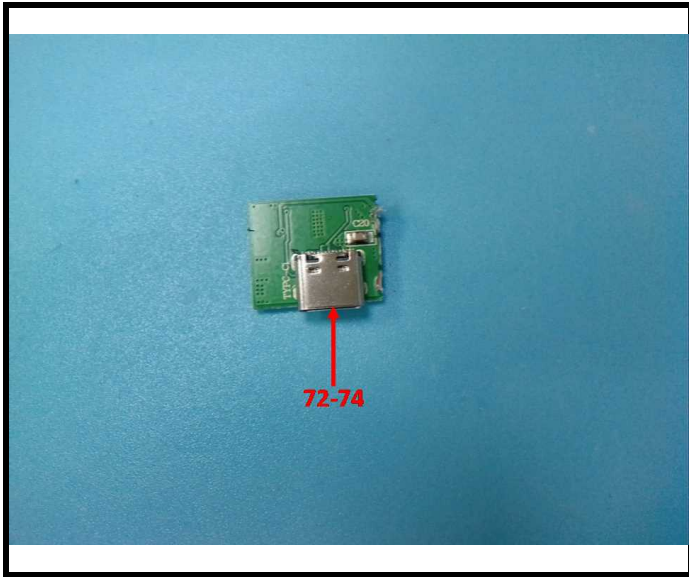


TEST REPORT

Report No.: 2401T77469E

Date: June 25, 2024

Page 29 of 44

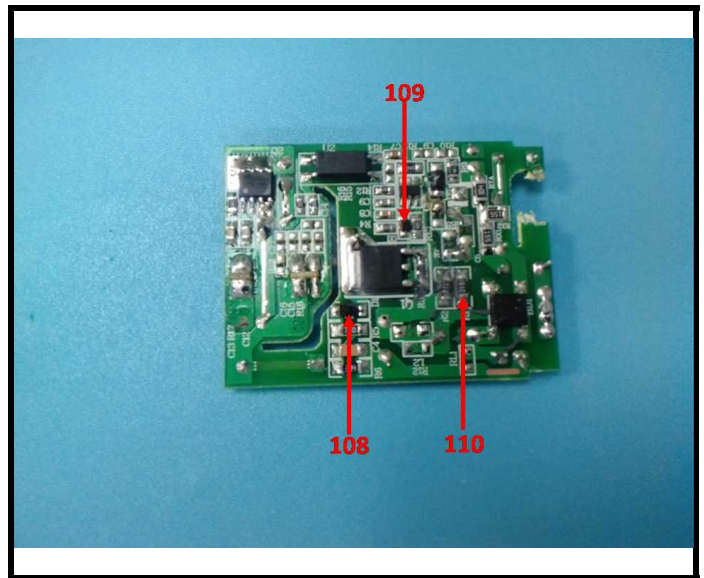
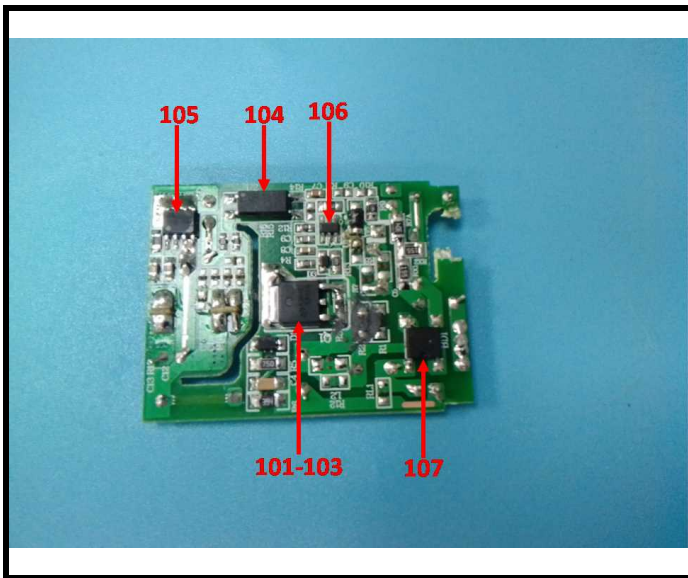
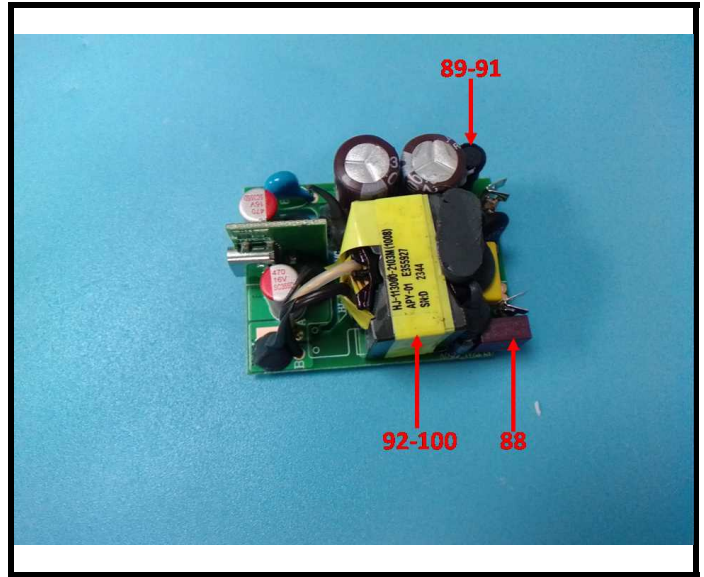
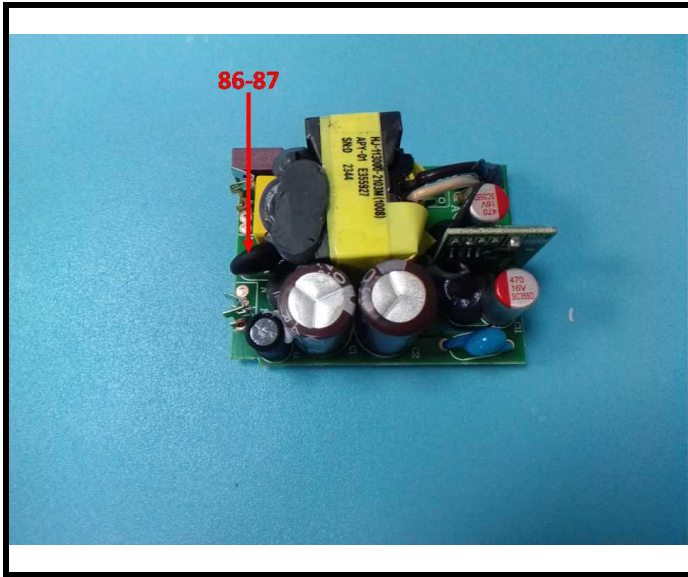


TEST REPORT

Report No.: 2401T77469E

Date: June 25, 2024

Page 30 of 44

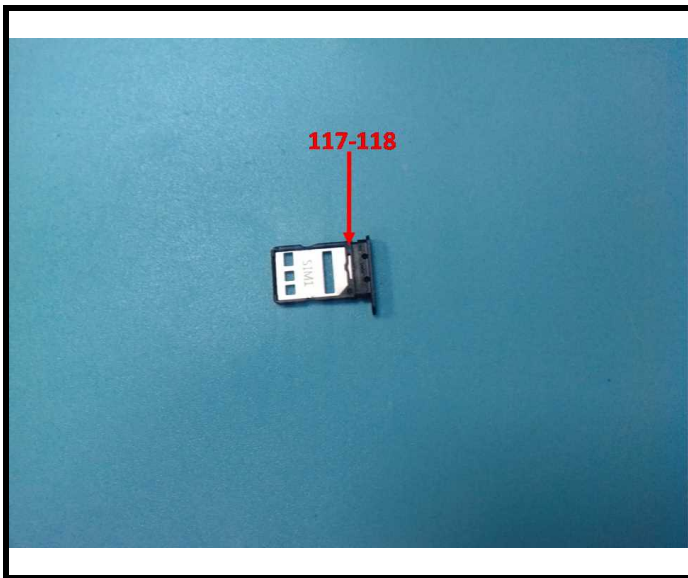
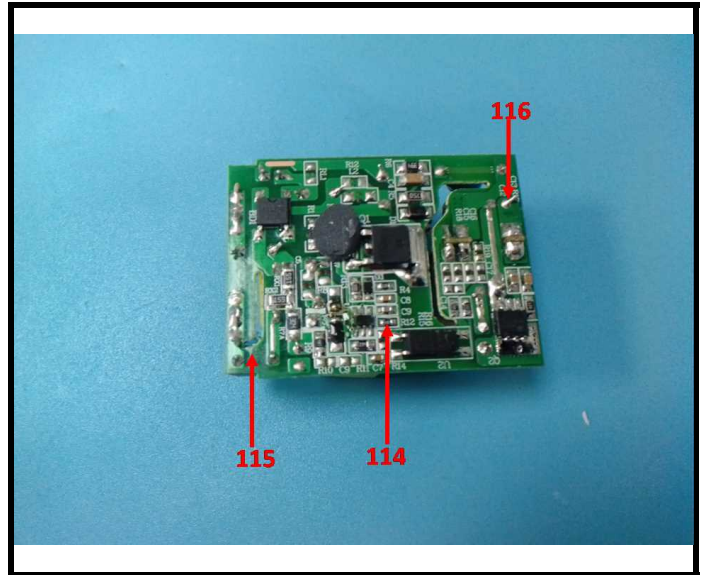
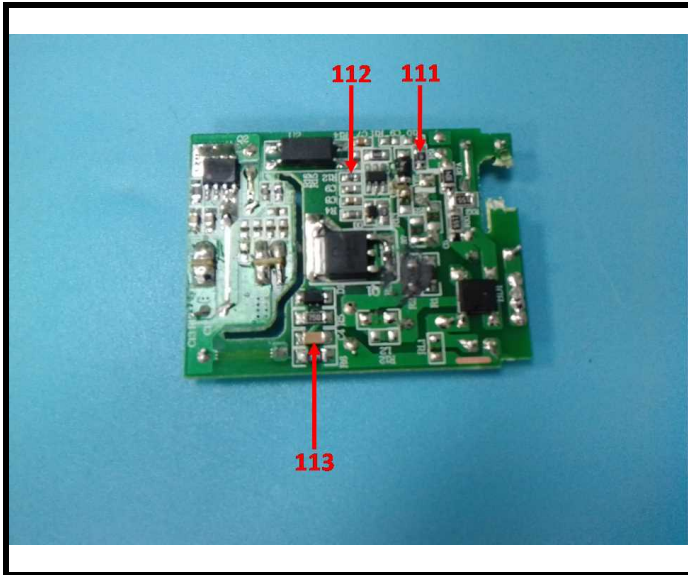


TEST REPORT

Report No.: 2401T77469E

Date: June 25, 2024

Page 31 of 44

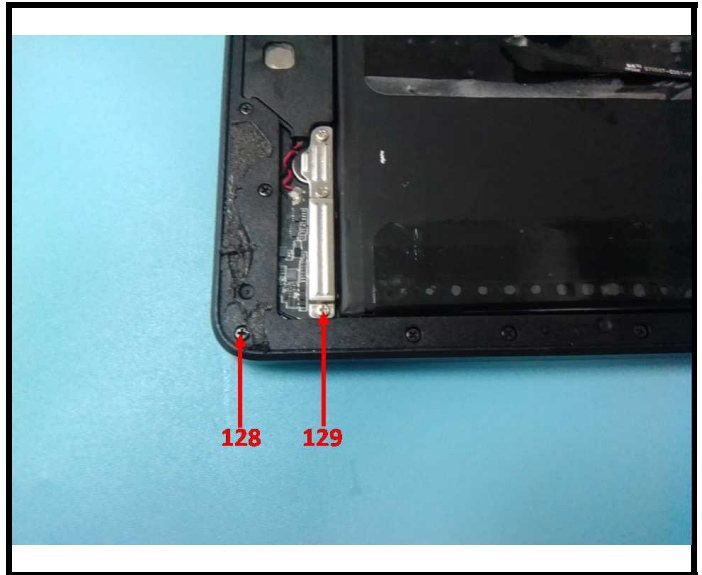
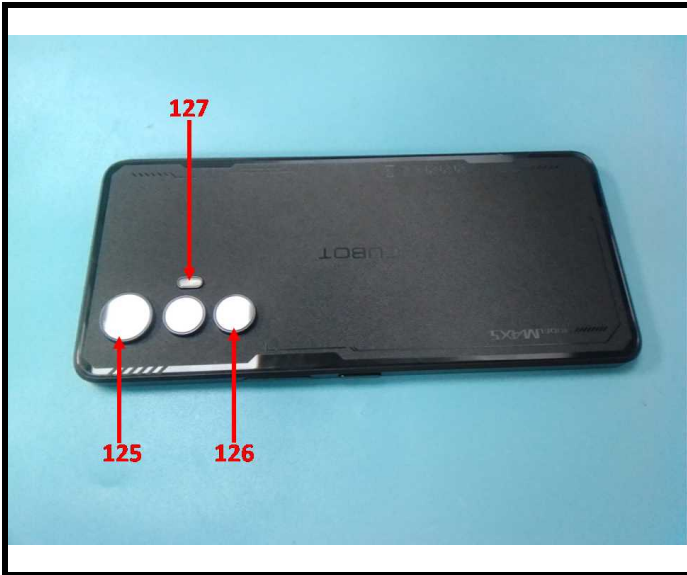
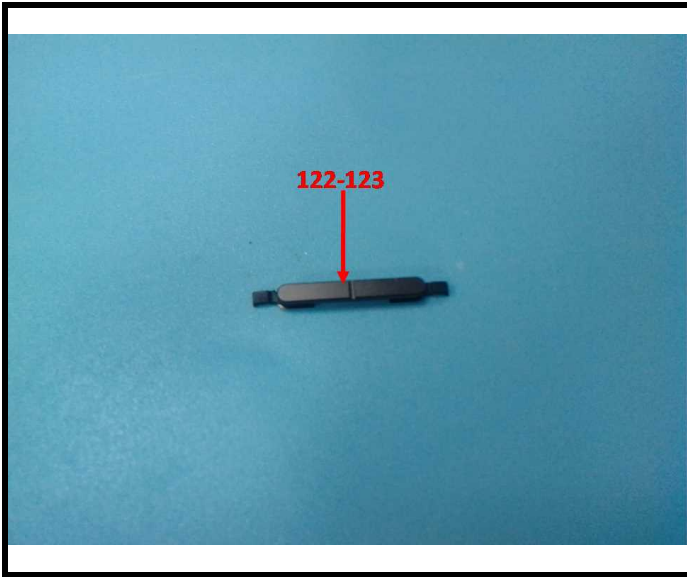


TEST REPORT

Report No.: 2401T77469E

Date: June 25, 2024

Page 32 of 44

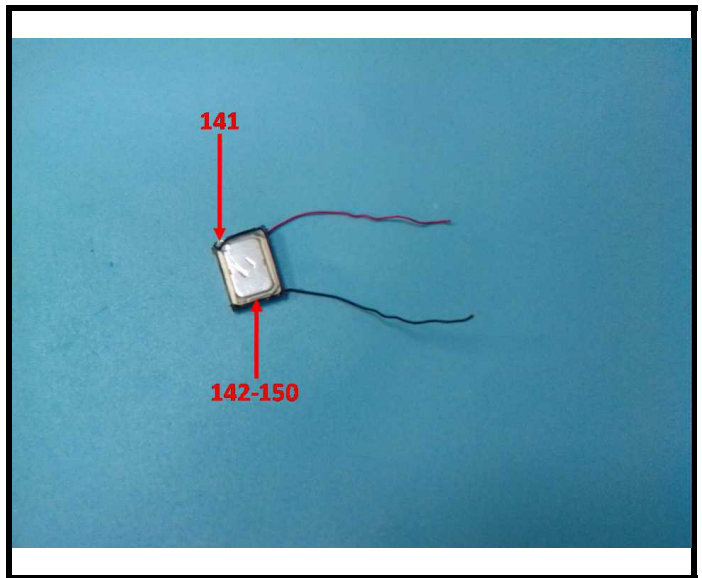
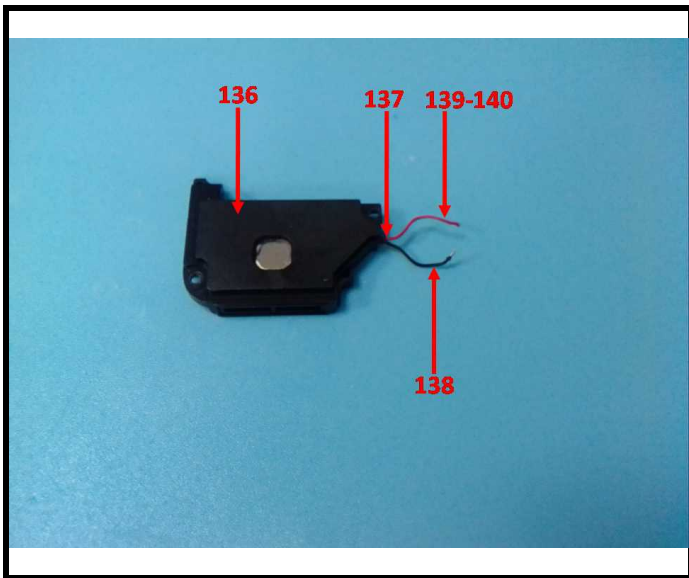
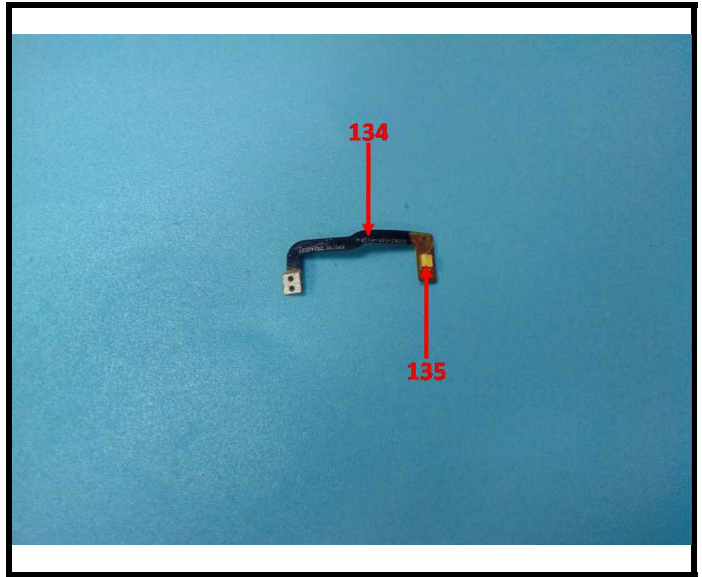


TEST REPORT

Report No.: 2401T77469E

Date: June 25, 2024

Page 33 of 44

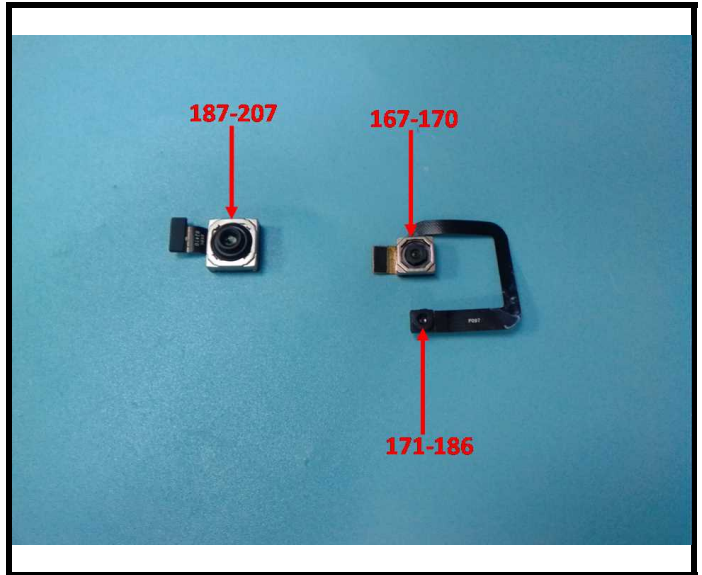
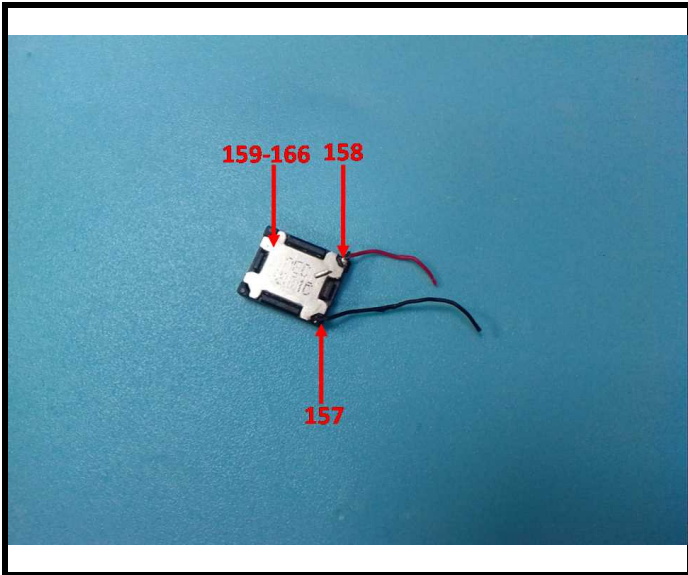
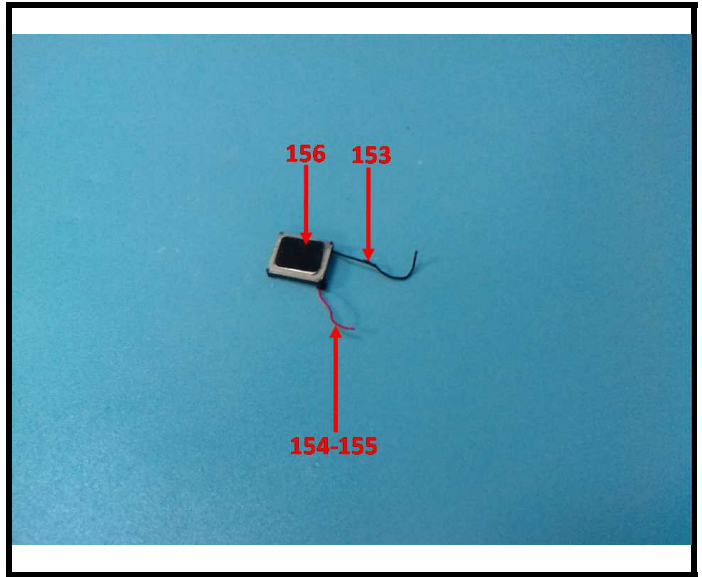
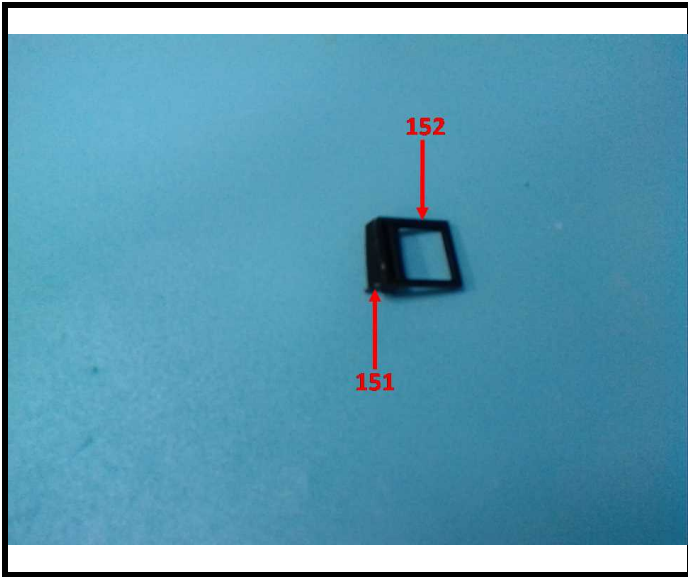


TEST REPORT

Report No.: 2401T77469E

Date: June 25, 2024

Page 34 of 44

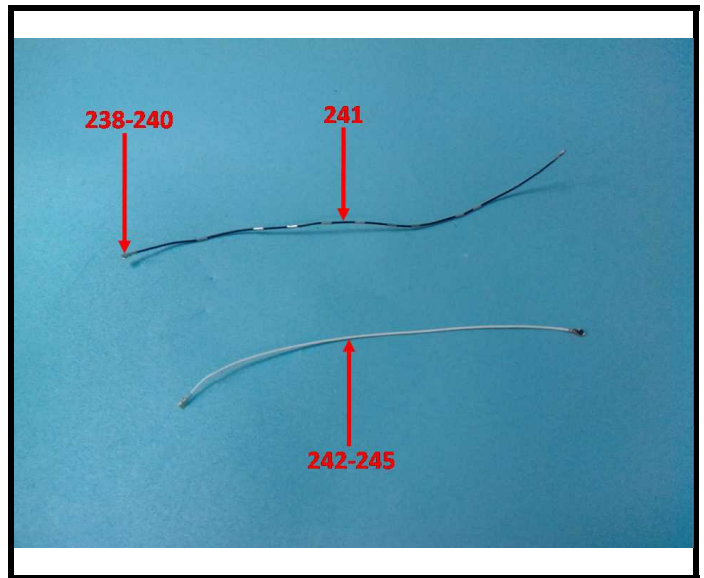
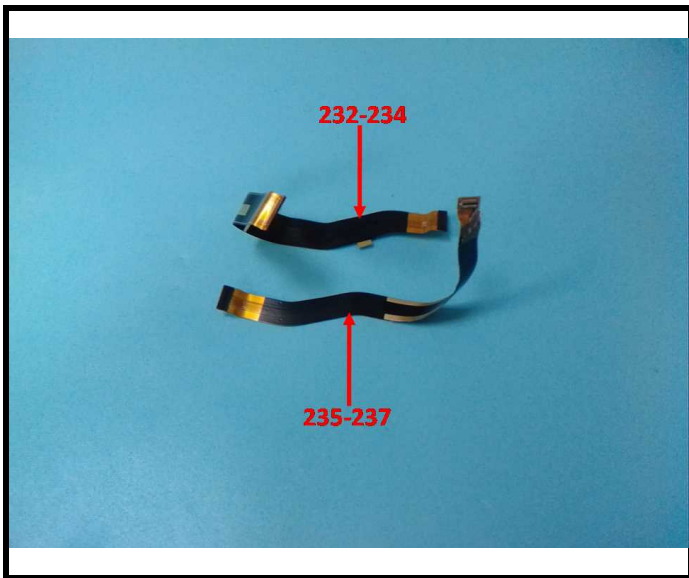
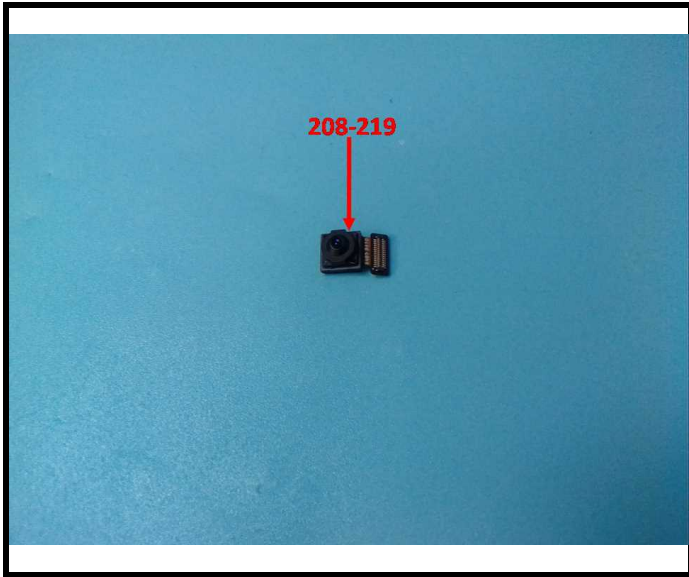


TEST REPORT

Report No.: 2401T77469E

Date: June 25, 2024

Page 35 of 44

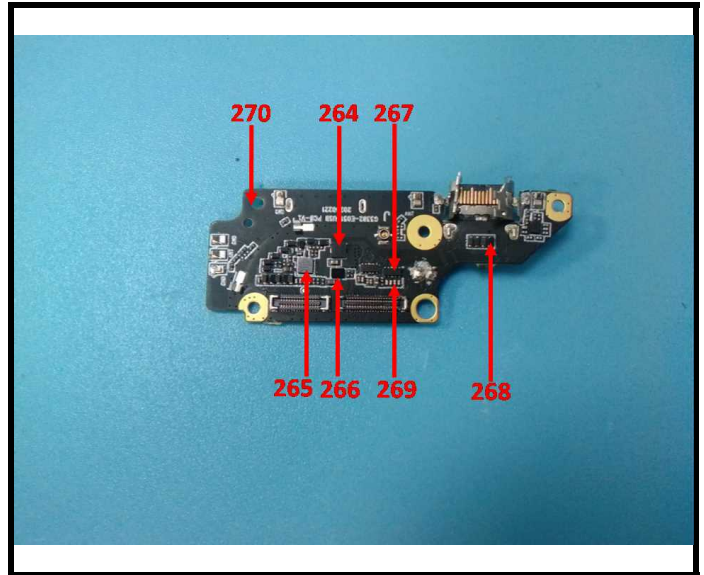
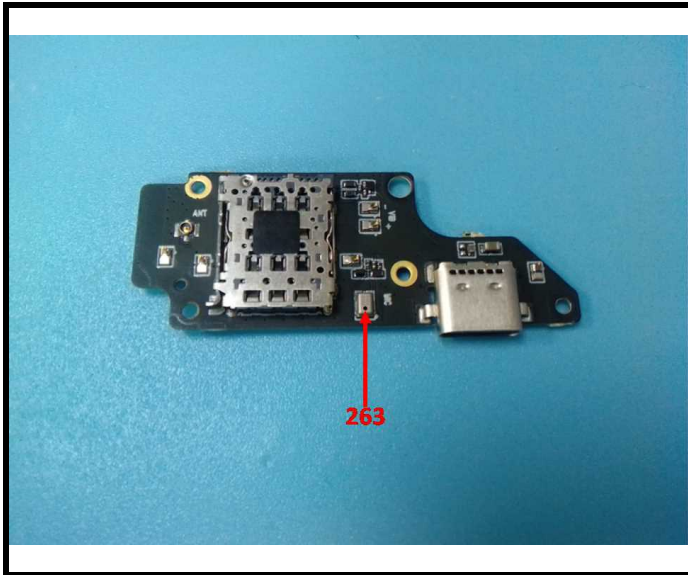
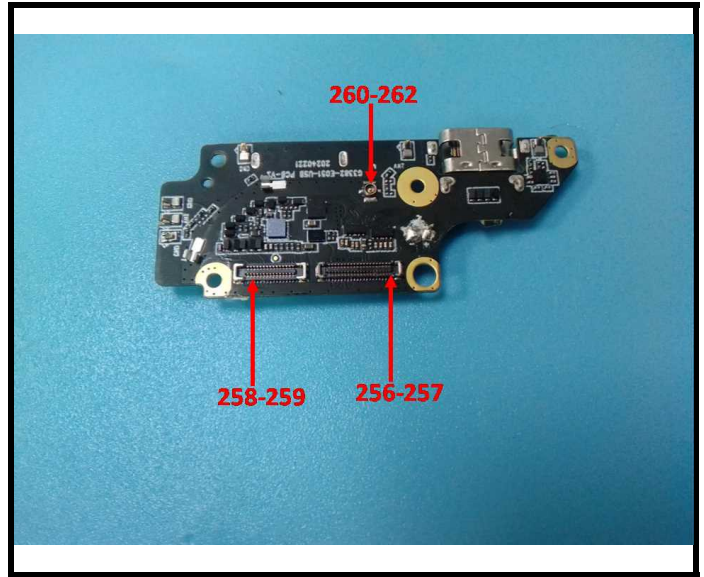
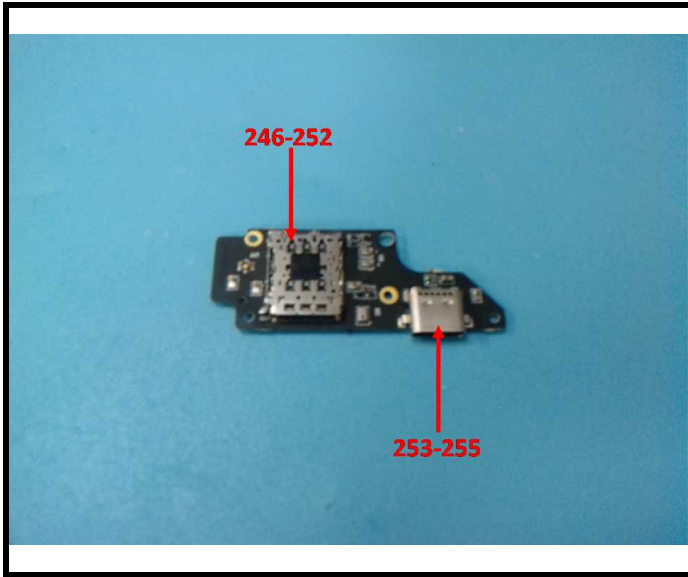


TEST REPORT

Report No.: 2401T77469E

Date: June 25, 2024

Page 36 of 44

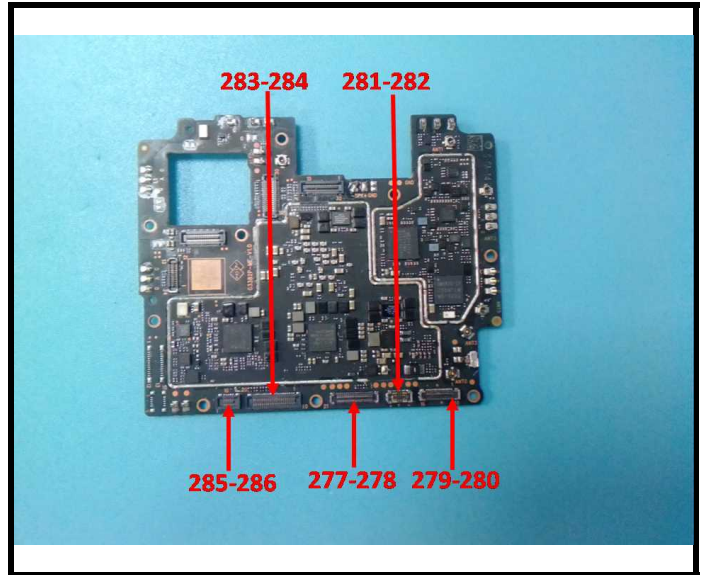
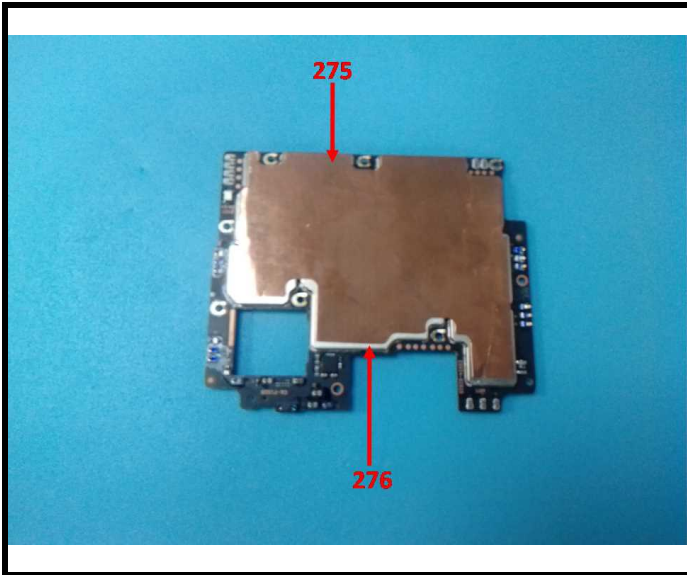
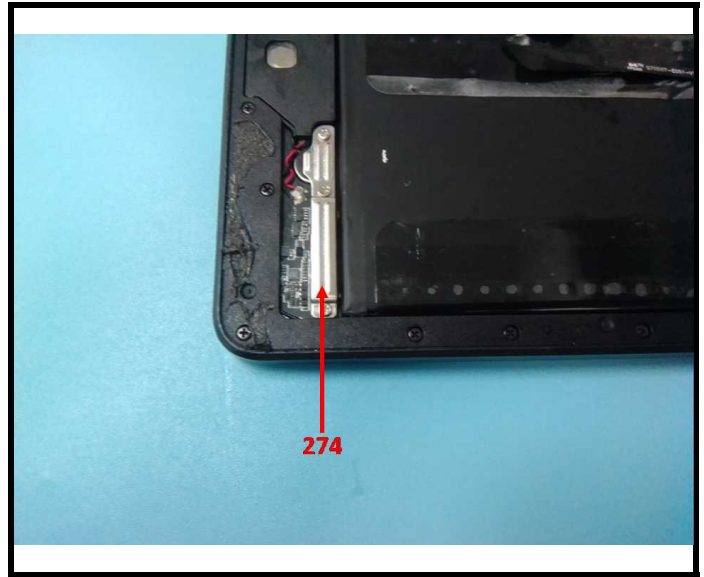
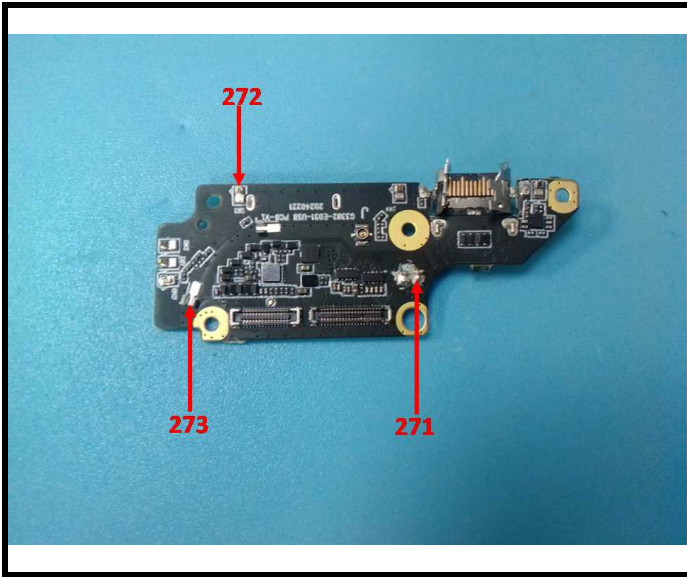


TEST REPORT

Report No.: 2401T77469E

Date: June 25, 2024

Page 37 of 44

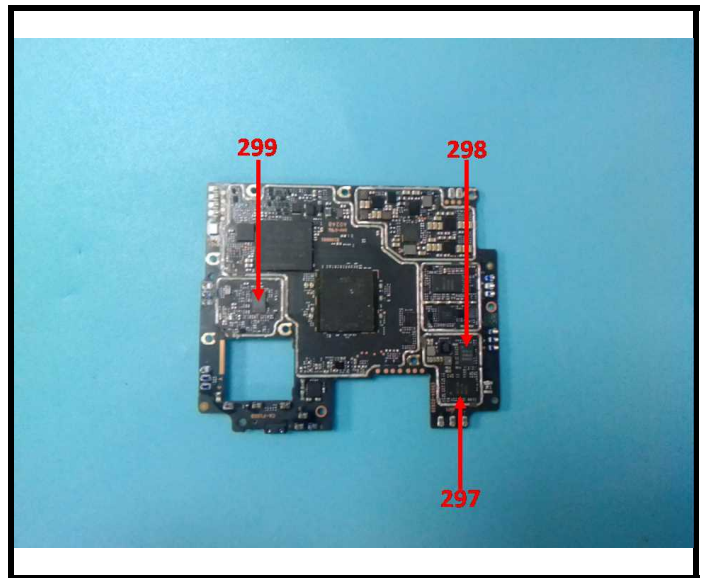
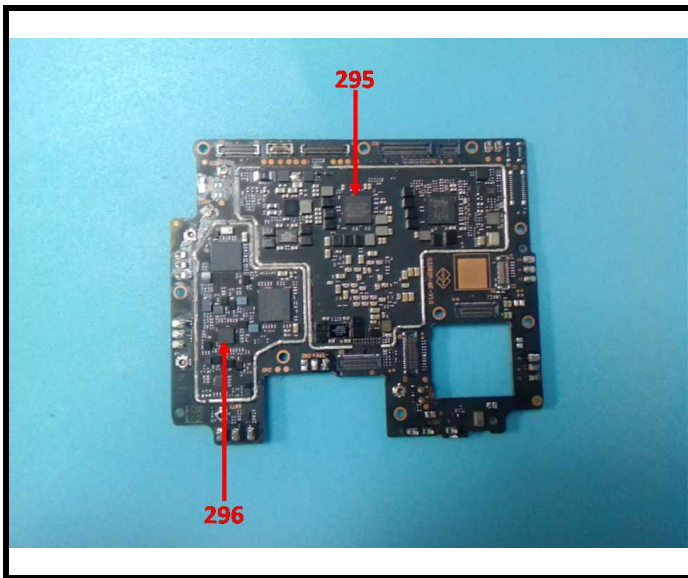
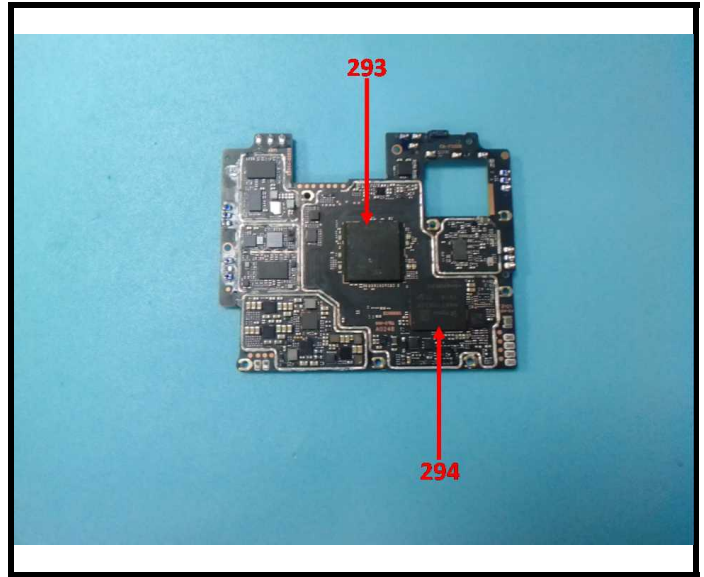
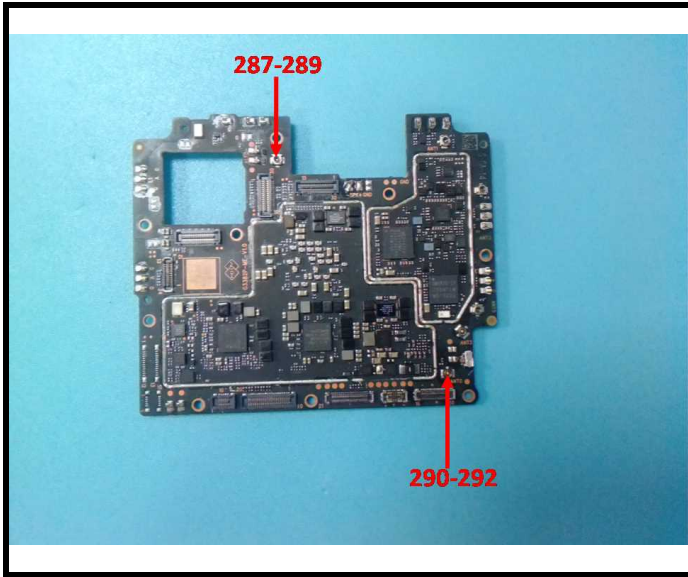


TEST REPORT

Report No.: 2401T77469E

Date: June 25, 2024

Page 38 of 44

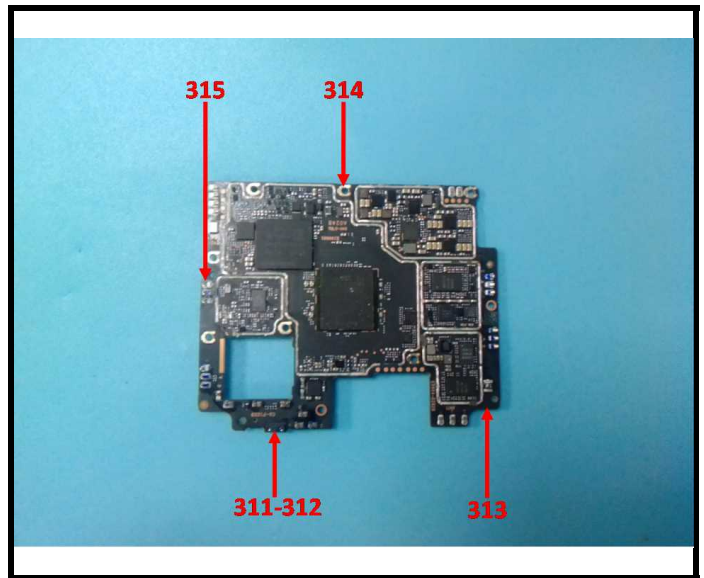
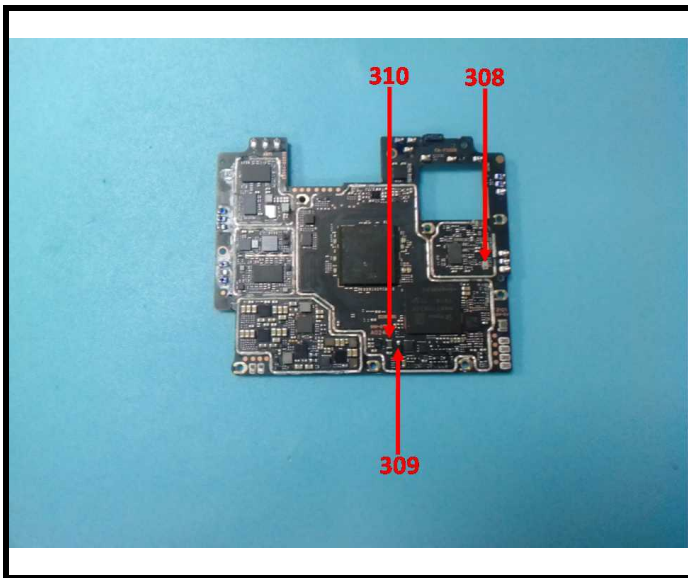
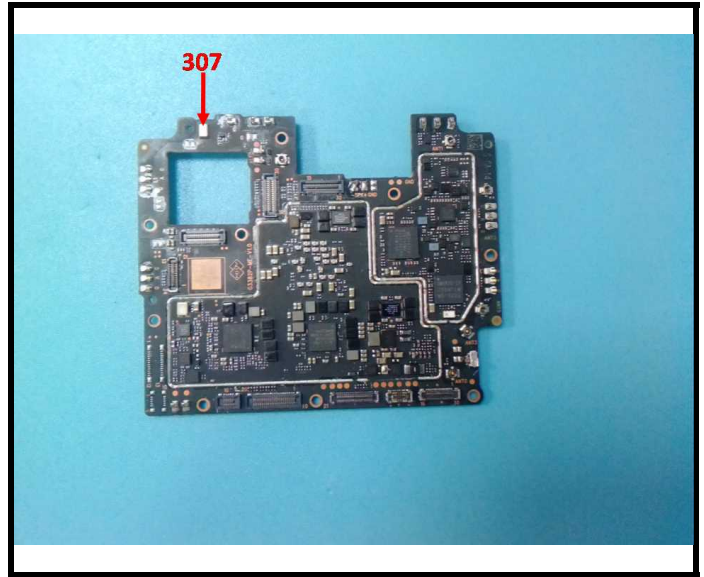
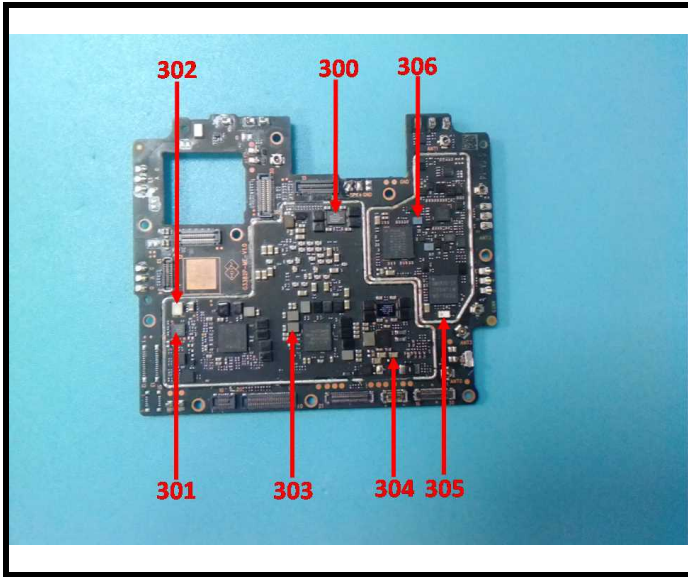


TEST REPORT

Report No.: 2401T77469E

Date: June 25, 2024

Page 39 of 44

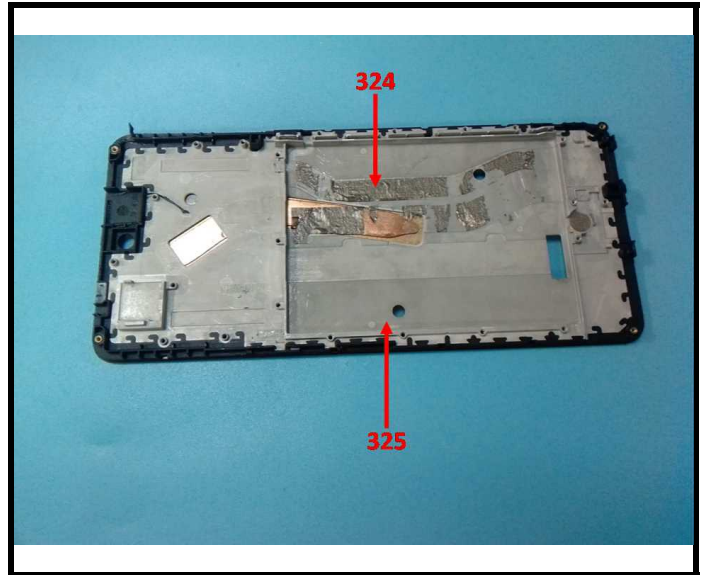
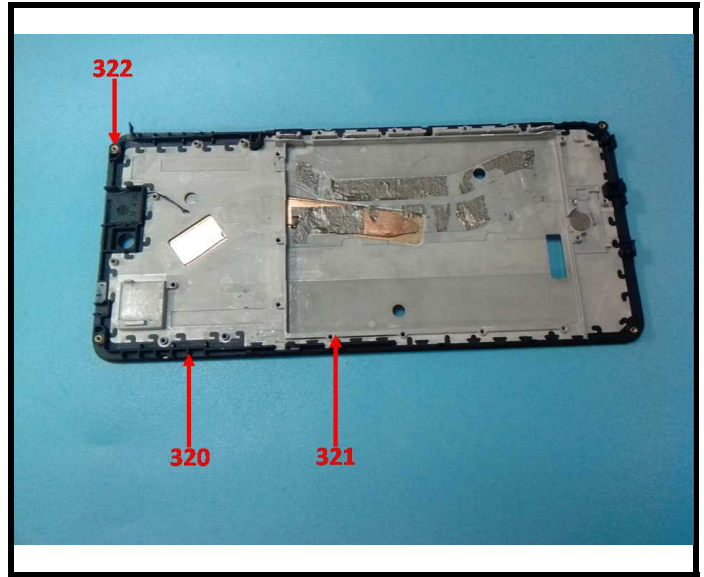
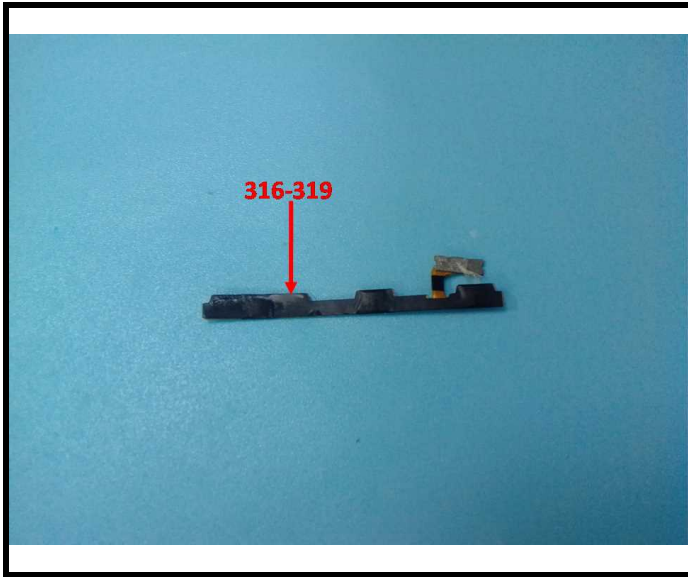


TEST REPORT

Report No.: 2401T77469E

Date: June 25, 2024

Page 40 of 44

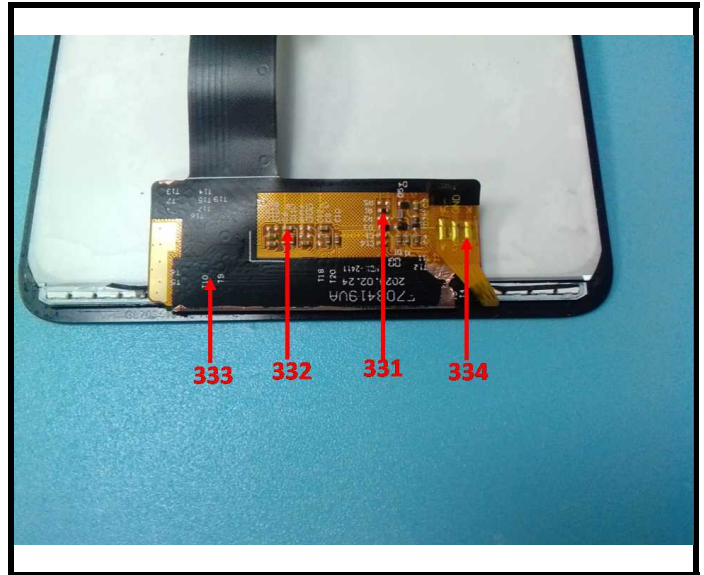
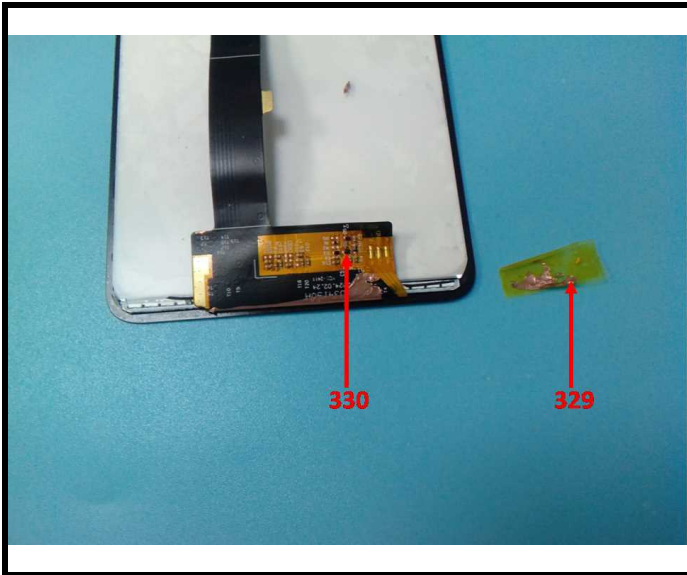
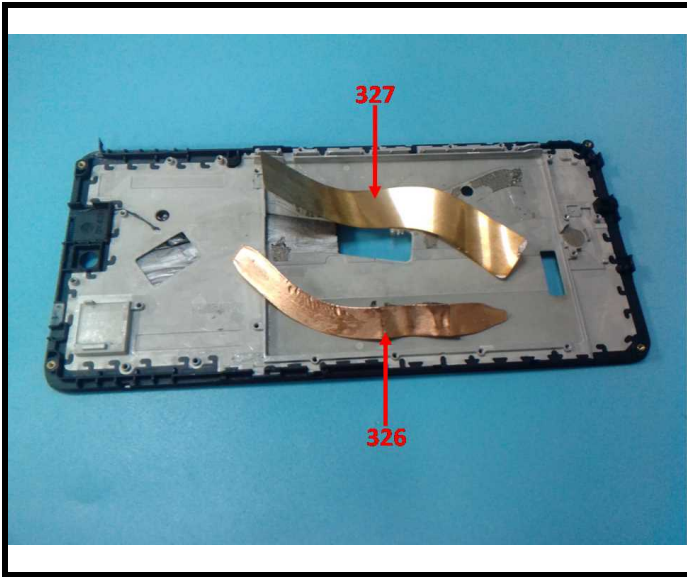


TEST REPORT

Report No.: 2401T77469E

Date: June 25, 2024

Page 41 of 44

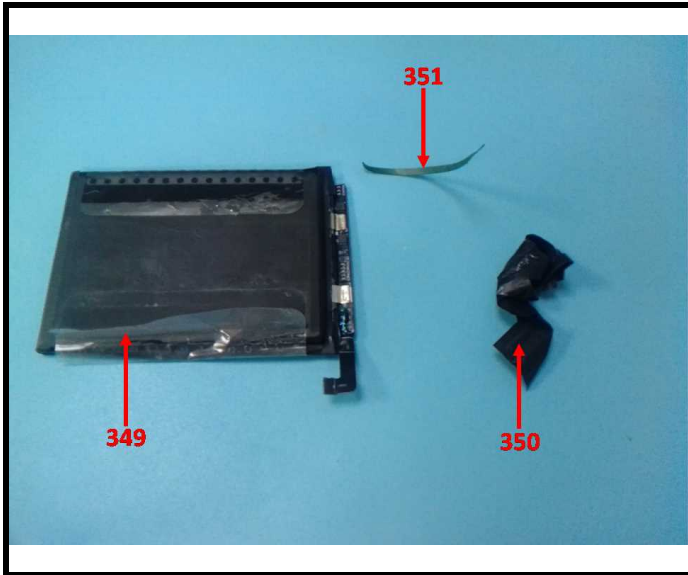
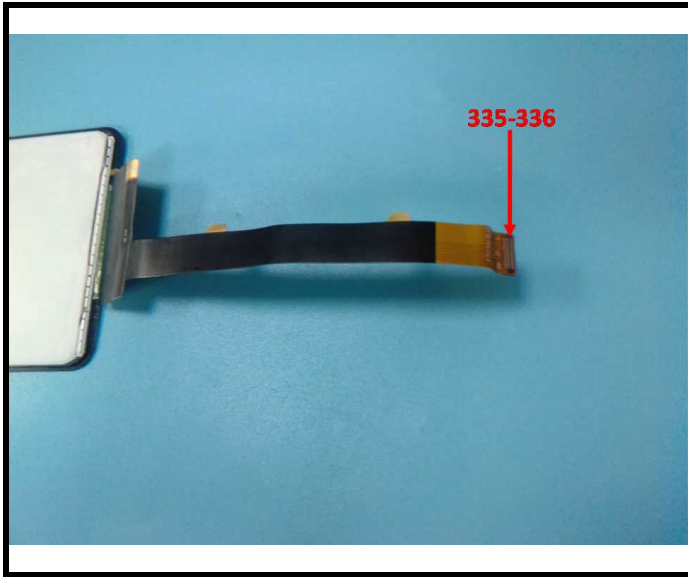


TEST REPORT

Report No.: 2401T77469E

Date: June 25, 2024

Page 42 of 44

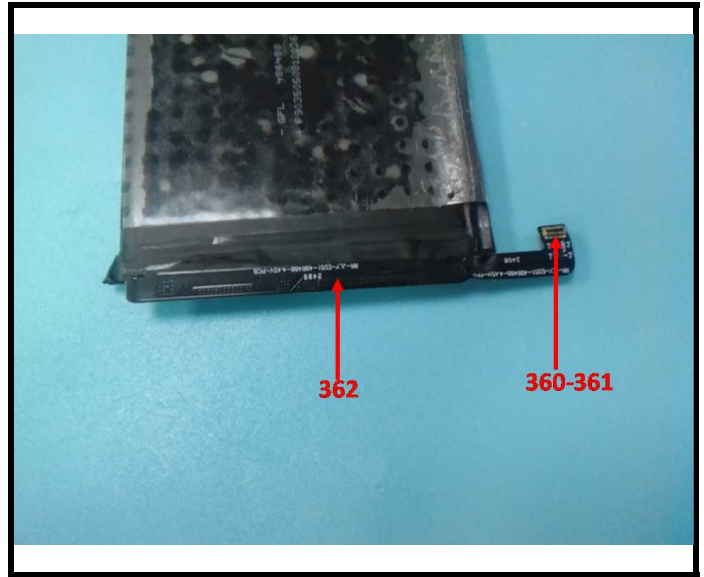
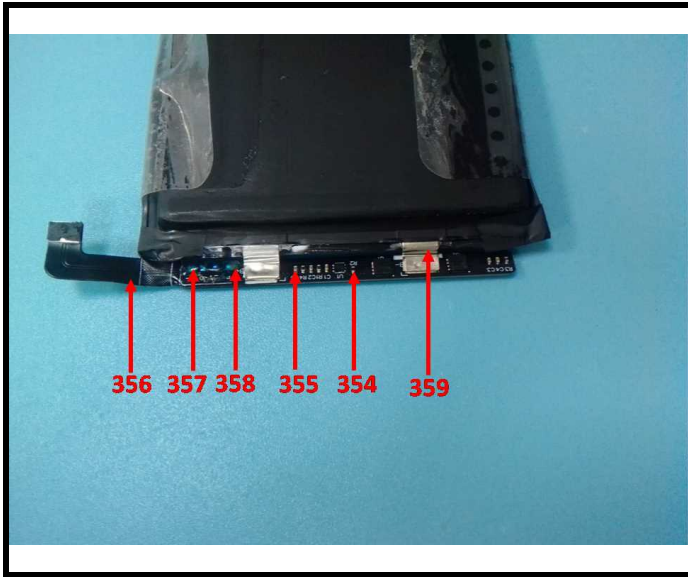


TEST REPORT

Report No.: 2401T77469E

Date: June 25, 2024

Page 43 of 44



BACL authenticate the photo on original report only

TEST REPORT

Report No.: 2401T77469E

Date: June 25, 2024

Page 44 of 44

Statement:

- 1.This report cannot be reproduced except in full, without prior written approval of the Company.
- 2.Unless otherwise stated the results shown in this test report refer only to the sample(s) tested and such sample(s) are retained for 30 days only.
- 3.This report is valid only with a valid digital signature. The digital signature may be available only under the Adobe software above version 7.0.
- 4.Otherwise required by the applicant or Product Regulations, Decision Rule in this report did not consider the uncertainty.
- 5.The information which provided by the applicant, such as sample description, sample name, material component, style/item No. , P.O. No. , manufacturer, age phase, the laboratory is not responsible for its authenticity and this information can affect the validity of the result in the test report.
- 6.The test samples were in good condition before testing.

*** End of Report ***