



# TEST REPORT

**Applicant** : Shenzhen Huafurui Technology Co., Ltd.  
**Address** : Unit 601-03, 6/F, Block A, Building 1, Ganfeng Technology Building, No. 993  
Jiaxian Road, Xiangjiaotang Community, Bantian Street, Longgang  
District, Shenzhen, P.R. China

## Report on the submitted samples said to be:

**Sample Name(s)** : Smartphone  
**Trade Mark** : CUBOT  
**Tested Model No.** : KINGKONG ES  
**Sample Received Date** : May 22, 2024  
**Testing Period** : May 22, 2024 ~ May 29, 2024  
**Date of Report** : May 30, 2024  
**Testing Location** : 901, No.40 Building, Xialang Industrial Zone, Heshuikou Community,  
Matian Street, Guangming District, Shenzhen, Guangdong, China  
**Results** : Please refer to next page(s).

| TEST REQUEST   | CONCLUSION |
|--|------------|
| As specified by client, based on the performed tests on submitted sample, the result of Lead(Pb), Cadmium(Cd), Mercury(Hg), Hexavalent Chromium(Cr(VI)), PBBs, PBDEs, Dibutyl Phthalate(DBP), Butylbenzyl Phthalate(BBP), Di-2-ethylhexyl Phthalate(DEHP) and Diisobutyl phthalate(DIBP) content comply with the limits set by RoHS Directive 2011/65/EU with amendment (EU) 2015/863. | PASS       |

Signed for and on behalf of LCS

Terry Luo



**A. EU RoHS Directive 2011/65/EU and its amendment directives**

Test method: Refer to IEC 62321-1:2013&IEC 62321-2:2021&IEC 62321-3-1:2013, Screening by X-ray Fluorescence Spectroscopy (XRF).

Test result(s):

| Sample No. | Sample Description                   | Screening Result(s) |    |    |                 |                 |       | Date of sample submission/ Resubmission |
|------------|--------------------------------------|---------------------|----|----|-----------------|-----------------|-------|---|
|            |                                      | Cd                  | Pb | Hg | Cr <sup>▼</sup> | Br <sup>▼</sup> |       |   |
|            |                                      |                     |    |    |                 | PBBs            | PBDEs |   |
| 1          | Black semi transparent glass screen  | BL                  | BL | BL | BL              | BL              | BL    | 2024-05-22                              |
| 2          | Grey cloth adhesive                  | BL                  | BL | BL | BL              | BL              | BL    | 2024-05-22                              |
| 3          | Black plastic tape                   | BL                  | BL | BL | BL              | BL              | BL    | 2024-05-22                              |
| 4          | Silver metal shell                   | BL                  | BL | BL | BL              | /               | /     | 2024-05-22                              |
| 5          | Green FPC                            | BL                  | BL | BL | BL              | BL              | BL    | 2024-05-22                              |
| 6          | White printed black FPC              | BL                  | BL | BL | BL              | BL              | BL    | 2024-05-22                              |
| 7          | Gold metal pin                       | BL                  | BL | BL | BL              | /               | /     | 2024-05-22                              |
| 8          | Black plastic port housing           | BL                  | BL | BL | BL              | BL              | BL    | 2024-05-22                              |
| 9          | Yellow semi transparent plastic tape | BL                  | BL | BL | BL              | BL              | BL    | 2024-05-22                              |
| 10         | Brown body (SMT capacitor)           | BL                  | BL | BL | BL              | BL              | BL    | 2024-05-22                              |
| 11         | Black body (T1)                      | BL                  | BL | BL | BL              | BL              | BL    | 2024-05-22                              |
| 12         | White plastic frame                  | BL                  | BL | BL | BL              | BL              | BL    | 2024-05-22                              |
| 13         | Black semi transparent glass screen  | BL                  | BL | BL | BL              | BL              | BL    | 2024-05-22                              |
| 14         | Black semi transparent plastic film  | BL                  | BL | BL | BL              | BL              | BL    | 2024-05-22                              |
| 15         | White body (LED)                     | BL                  | BL | BL | BL              | BL              | BL    | 2024-05-22                              |
| 16         | White FPC                            | BL                  | BL | BL | BL              | BL              | BL    | 2024-05-22                              |
| 17         | Silver semi transparent plastic film | BL                  | BL | BL | BL              | BL              | BL    | 2024-05-22                              |
| 18         | White plastic film                   | BL                  | BL | BL | BL              | BL              | BL    | 2024-05-22                              |
| 19         | Silver plastic film                  | BL                  | BL | BL | BL              | BL              | BL    | 2024-05-22                              |
| 20         | Colorless transparent plastic board  | BL                  | BL | BL | BL              | BL              | BL    | 2024-05-22                              |
| 21         | Silver metal plate                   | BL                  | BL | BL | BL              | /               | /     | 2024-05-22                              |
| 22         | Silver metal screw                   | BL                  | BL | BL | BL              | /               | /     | 2024-05-22                              |
| 23         | Black plastic shell                  | BL                  | BL | BL | BL              | BL              | BL    | 2024-05-22                              |
| 24         | Grey foam adhesive                   | BL                  | BL | BL | BL              | BL              | BL    | 2024-05-22                              |



Shenzhen LCS Compliance Testing Laboratory Ltd.

Add: 901, No.40 Building, Xialang Industrial Zone, Heshuikou Community, Matian Street, Guangming District, Shenzhen, Guangdong, China

Tel: +(86) 0755-82591330 | E-mail: webmaster@lcs-cert.com | Web: www.lcs-cert.com

Scan code to check authenticity

Document No:TRF-4-R-027 Ver. A/0



| Sample No. | Sample Description                   | Screening Result(s) |    |    |                 |                 |       | Date of sample submission/ Resubmission |
|------------|--------------------------------------|---------------------|----|----|-----------------|-----------------|-------|---|
|            |                                      | Cd                  | Pb | Hg | Cr <sup>▼</sup> | Br <sup>▼</sup> |       |   |
|            |                                      |                     |    |    |                 | PBBs            | PBDEs |   |
| 25         | Black soft plastic pad with adhesive | BL                  | BL | BL | BL              | BL              | BL    | 2024-05-22                              |
| 26         | Gold metal nut                       | BL                  | BL | BL | BL              | /               | /     | 2024-05-22                              |
| 27         | Orange plastic shell                 | BL                  | BL | BL | BL              | BL              | BL    | 2024-05-22                              |
| 28         | Yellow FPC                           | BL                  | BL | BL | BL              | BL              | BL    | 2024-05-22                              |
| 29         | Black plastic shell                  | BL                  | BL | BL | BL              | BL              | BL    | 2024-05-22                              |
| 30         | Grey cloth with black foam           | BL                  | BL | BL | BL              | BL              | BL    | 2024-05-22                              |
| 31         | Black plastic mesh                   | BL                  | BL | BL | BL              | BL              | BL    | 2024-05-22                              |
| 32         | Black soft plastic pad with adhesive | BL                  | BL | BL | BL              | BL              | BL    | 2024-05-22                              |
| 33         | Red plastic wire skin                | BL                  | BL | BL | BL              | BL              | BL    | 2024-05-22                              |
| 34         | Blue plastic wire skin               | BL                  | BL | BL | BL              | BL              | BL    | 2024-05-22                              |
| 35         | Silver metal wire core               | BL                  | BL | BL | BL              | /               | /     | 2024-05-22                              |
| 36         | Silver metal shell                   | BL                  | BL | BL | BL              | /               | /     | 2024-05-22                              |
| 37         | Yellow FPC                           | BL                  | BL | BL | BL              | BL              | BL    | 2024-05-22                              |
| 38         | Silver metal shell                   | BL                  | BL | BL | BL              | /               | /     | 2024-05-22                              |
| 39         | Silver metal sheet                   | BL                  | BL | BL | BL              | /               | /     | 2024-05-22                              |
| 40         | Gold metal wire                      | BL                  | BL | BL | BL              | /               | /     | 2024-05-22                              |
| 41         | Silver metal magnet                  | BL                  | BL | BL | BL              | /               | /     | 2024-05-22                              |
| 42         | Green PCB board                      | BL                  | BL | BL | BL              | BL              | BL    | 2024-05-22                              |
| 43         | Copper colored metal bearings        | BL                  | BL | BL | BL              | /               | /     | 2024-05-22                              |
| 44         | White plastic gasket                 | BL                  | BL | BL | BL              | BL              | BL    | 2024-05-22                              |
| 45         | Gold metal port housing              | BL                  | BL | BL | BL              | /               | /     | 2024-05-22                              |
| 46         | Soldering                            | BL                  | BL | BL | BL              | /               | /     | 2024-05-22                              |
| 47         | Black plastic sheet                  | BL                  | BL | BL | BL              | BL              | BL    | 2024-05-22                              |
| 48         | Silver metal pin                     | BL                  | BL | BL | BL              | /               | /     | 2024-05-22                              |
| 49         | Black plastic port housing           | BL                  | BL | BL | BL              | BL              | BL    | 2024-05-22                              |
| 50         | Gold metal pins                      | BL                  | BL | BL | BL              | /               | /     | 2024-05-22                              |
| 51         | Silver metal port housing            | BL                  | BL | BL | BL              | /               | /     | 2024-05-22                              |
| 52         | Silver metal pins                    | BL                  | BL | BL | BL              | /               | /     | 2024-05-22                              |
| 53         | Gold metal pin                       | BL                  | BL | BL | BL              | /               | /     | 2024-05-22                              |
| 54         | Black plastic sheet                  | BL                  | BL | BL | BL              | BL              | BL    | 2024-05-22                              |
| 55         | Black plastic wire leather           | BL                  | BL | BL | BL              | BL              | BL    | 2024-05-22                              |



Shenzhen LCS Compliance Testing Laboratory Ltd.

Add: 901, No.40 Building, Xialang Industrial Zone, Heshuikou Community, Matian Street, Guangming District, Shenzhen, Guangdong, China

Tel: +(86) 0755-82591330 | E-mail: webmaster@lcs-cert.com | Web: www.lcs-cert.com

Scan code to check authenticity

Document No:TRF-4-R-027 Ver. A/0



| Sample No. | Sample Description                   | Screening Result(s) |    |    |                 |                 |       | Date of sample submission/ Resubmission |
|------------|--------------------------------------|---------------------|----|----|-----------------|-----------------|-------|---|
|            |                                      | Cd                  | Pb | Hg | Cr <sup>▼</sup> | Br <sup>▼</sup> |       |   |
|            |                                      |                     |    |    |                 | PBBs            | PBDEs |   |
| 56         | Silver metal wire core               | BL                  | BL | BL | BL              | /               | /     | 2024-05-22                              |
| 57         | Silver metal pins                    | BL                  | BL | BL | BL              | /               | /     | 2024-05-22                              |
| 58         | Silver metal shell                   | BL                  | BL | BL | BL              | /               | /     | 2024-05-22                              |
| 59         | Black plastic shell                  | BL                  | BL | BL | BL              | BL              | BL    | 2024-05-22                              |
| 60         | Red plastic wire skin                | BL                  | BL | BL | BL              | BL              | BL    | 2024-05-22                              |
| 61         | Silver metal magnet                  | BL                  | BL | BL | BL              | /               | /     | 2024-05-22                              |
| 62         | Gold metal wire                      | BL                  | BL | BL | BL              | /               | /     | 2024-05-22                              |
| 63         | Silver metal sheet                   | BL                  | BL | BL | BL              | /               | /     | 2024-05-22                              |
| 64         | Gold metal plug housing              | BL                  | BL | BL | BL              | /               | /     | 2024-05-22                              |
| 65         | Black plastic wire leather           | BL                  | BL | BL | BL              | BL              | BL    | 2024-05-22                              |
| 66         | Silver metal wire core               | BL                  | BL | BL | BL              | /               | /     | 2024-05-22                              |
| 67         | Copper colored metal film            | BL                  | BL | BL | BL              | /               | /     | 2024-05-22                              |
| 68         | Silver metal shell                   | BL                  | BL | BL | BL              | /               | /     | 2024-05-22                              |
| 69         | Brown plastic sheet                  | BL                  | BL | BL | BL              | BL              | BL    | 2024-05-22                              |
| 70         | Black plastic shell                  | BL                  | BL | BL | BL              | BL              | BL    | 2024-05-22                              |
| 71         | Colorless transparent plastic lenses | BL                  | BL | BL | BL              | BL              | BL    | 2024-05-22                              |
| 72         | White printed yellow FPC             | BL                  | BL | BL | BL              | BL              | BL    | 2024-05-22                              |
| 73         | Green glass screen                   | BL                  | BL | BL | BL              | BL              | BL    | 2024-05-22                              |
| 74         | Black plastic shell                  | BL                  | BL | BL | BL              | BL              | BL    | 2024-05-22                              |
| 75         | Colorless transparent glass screen   | BL                  | BL | BL | BL              | BL              | BL    | 2024-05-22                              |
| 76         | Black body (IC)                      | BL                  | BL | BL | BL              | BL              | BL    | 2024-05-22                              |
| 77         | Black body (IC)                      | BL                  | BL | BL | BL              | BL              | BL    | 2024-05-22                              |
| 78         | Black body (IC)                      | BL                  | BL | BL | BL              | BL              | BL    | 2024-05-22                              |
| 79         | Black body (magnetic beads)          | BL                  | BL | BL | BL              | BL              | BL    | 2024-05-22                              |
| 80         | Black body (IC)                      | BL                  | BL | BL | BL              | BL              | BL    | 2024-05-22                              |
| 81         | Silver crystal oscillator            | BL                  | BL | BL | BL              | /               | /     | 2024-05-22                              |
| 82         | White body (LED)                     | BL                  | BL | BL | BL              | BL              | BL    | 2024-05-22                              |
| 83         | Black body (lamp beads)              | BL                  | BL | BL | BL              | BL              | BL    | 2024-05-22                              |
| 84         | Gold metal pins (slot)               | BL                  | BL | BL | BL              | /               | /     | 2024-05-22                              |
| 85         | Black plastic shell (card slot)      | BL                  | BL | BL | BL              | BL              | BL    | 2024-05-22                              |



Shenzhen LCS Compliance Testing Laboratory Ltd.

Add: 901, No.40 Building, Xialang Industrial Zone, Heshuikou Community, Matian Street, Guangming District, Shenzhen, Guangdong, China

Tel: +(86) 0755-82591330 | E-mail: webmaster@lcs-cert.com | Web: www.lcs-cert.com

Scan code to check authenticity

Document No:TRF-4-R-027 Ver. A/0



| Sample No. | Sample Description                   | Screening Result(s) |    |    |                 |                 |       | Date of sample submission/ Resubmission |
|------------|--------------------------------------|---------------------|----|----|-----------------|-----------------|-------|---|
|            |                                      | Cd                  | Pb | Hg | Cr <sup>▼</sup> | Br <sup>▼</sup> |       |   |
|            |                                      |                     |    |    |                 | PBBs            | PBDEs |   |
| 86         | Silver metal shell (card slot)       | BL                  | BL | BL | BL              | /               | /     | 2024-05-22                              |
| 87         | Silver metal fastener (slot)         | BL                  | BL | BL | BL              | /               | /     | 2024-05-22                              |
| 88         | Black plastic shell                  | BL                  | BL | BL | BL              | BL              | BL    | 2024-05-22                              |
| 89         | Yellow FPC                           | BL                  | BL | BL | BL              | BL              | BL    | 2024-05-22                              |
| 90         | Yellow plastic board                 | BL                  | BL | BL | BL              | BL              | BL    | 2024-05-22                              |
| 91         | Yellow body (LED)                    | BL                  | BL | BL | BL              | BL              | BL    | 2024-05-22                              |
| 92         | Silver metal shell                   | BL                  | BL | BL | BL              | /               | /     | 2024-05-22                              |
| 93         | White printed brown FPC              | BL                  | BL | BL | BL              | BL              | BL    | 2024-05-22                              |
| 94         | Silver metal sheet                   | BL                  | BL | BL | BL              | /               | /     | 2024-05-22                              |
| 95         | Copper colored metal wire            | BL                  | BL | BL | BL              | /               | /     | 2024-05-22                              |
| 96         | Black plastic shell                  | BL                  | BL | BL | BL              | BL              | BL    | 2024-05-22                              |
| 97         | Colorless transparent glass screen   | BL                  | BL | BL | BL              | BL              | BL    | 2024-05-22                              |
| 98         | Black printed white label adhesive   | BL                  | BL | BL | BL              | BL              | BL    | 2024-05-22                              |
| 99         | Black body (IC)                      | BL                  | BL | BL | BL              | BL              | BL    | 2024-05-22                              |
| 100        | Black body (IC)                      | BL                  | BL | BL | BL              | BL              | BL    | 2024-05-22                              |
| 101        | Black magnetic core (inductor)       | BL                  | BL | BL | BL              | /               | /     | 2024-05-22                              |
| 102        | Soldering                            | BL                  | BL | BL | BL              | /               | /     | 2024-05-22                              |
| 103        | Black PCB board                      | BL                  | BL | BL | BL              | BL              | BL    | 2024-05-22                              |
| 104        | Black body (SMT resistor)            | BL                  | BL | BL | BL              | BL              | BL    | 2024-05-22                              |
| 105        | Black plastic shell                  | BL                  | BL | BL | BL              | BL              | BL    | 2024-05-22                              |
| 106        | Black FPC                            | BL                  | BL | BL | BL              | BL              | BL    | 2024-05-22                              |
| 107        | Black FPC                            | BL                  | BL | BL | BL              | BL              | BL    | 2024-05-22                              |
| 108        | Yellow semi transparent plastic tape | BL                  | BL | BL | BL              | BL              | BL    | 2024-05-22                              |
| 109        | Colorless transparent plastic sheet  | BL                  | BL | BL | BL              | BL              | BL    | 2024-05-22                              |
| 110        | Silver battery body                  | BL                  | BL | BL | BL              | BL              | BL    | 2024-05-22                              |
| 111        | Silver metal buttons                 | BL                  | BL | BL | BL              | /               | /     | 2024-05-22                              |
| 112        | Silver metal plate                   | BL                  | BL | BL | BL              | /               | /     | 2024-05-22                              |
| 113        | Silver metal shrapnel                | BL                  | BL | BL | BL              | /               | /     | 2024-05-22                              |
| 114        | Silver metal plate                   | BL                  | BL | BL | BL              | /               | /     | 2024-05-22                              |
| 115        | Colorless transparent plastic tape   | BL                  | BL | BL | BL              | BL              | BL    | 2024-05-22                              |



Shenzhen LCS Compliance Testing Laboratory Ltd.

Add: 901, No.40 Building, Xialang Industrial Zone, Heshuikou Community, Matian Street, Guangming District, Shenzhen, Guangdong, China

Tel: +(86) 0755-82591330 | E-mail: webmaster@lcs-cert.com | Web: www.lcs-cert.com

Scan code to check authenticity

Document No:TRF-4-R-027 Ver. A/0



| Sample No. | Sample Description                        | Screening Result(s) |    |    |                 |                 |       | Date of sample submission/ Resubmission |
|------------|---|---------------------|----|----|-----------------|-----------------|-------|---|
|            |   | Cd                  | Pb | Hg | Cr <sup>▼</sup> | Br <sup>▼</sup> |       |   |
|            |   |                     |    |    |                 | PBBs            | PBDEs |   |
| 116        | Black plated silver metal screws          | BL                  | BL | BL | BL              | /               | /     | 2024-05-22                              |
| 117        | Silver metal shell                        | BL                  | BL | BL | BL              | /               | /     | 2024-05-22                              |
| 118        | White dry glue                            | BL                  | BL | BL | BL              | BL              | BL    | 2024-05-22                              |
| 119        | Black soft plastic stopper                | BL                  | BL | BL | BL              | BL              | BL    | 2024-05-22                              |
| 120        | Black plated silver metal screws          | BL                  | BL | BL | BL              | /               | /     | 2024-05-22                              |
| 121        | Black soft plastic outer skin             | BL                  | BL | BL | BL              | BL              | BL    | 2024-05-22                              |
| 122        | Black plastic board                       | BL                  | BL | BL | BL              | BL              | BL    | 2024-05-22                              |
| 123        | Silver metal shell with orange coating    | BL                  | BL | BL | BL              | /               | /     | 2024-05-22                              |
| 124        | Colorless transparent glass screen        | BL                  | BL | BL | BL              | BL              | BL    | 2024-05-22                              |
| 125        | Colorless transparent plastic lampshade   | BL                  | BL | BL | BL              | BL              | BL    | 2024-05-22                              |
| 126        | White plastic shell                       | BL                  | BL | BL | BL              | BL              | BL    | 2024-05-22                              |
| 127        | Black plastic mesh                        | BL                  | BL | BL | BL              | BL              | BL    | 2024-05-22                              |
| 128        | White foam adhesive                       | BL                  | BL | BL | BL              | BL              | BL    | 2024-05-22                              |
| 129        | Silver metal shell                        | BL                  | BL | BL | BL              | /               | /     | 2024-05-22                              |
| 130        | Green PCB board                           | BL                  | BL | BL | BL              | BL              | BL    | 2024-05-22                              |
| 131        | White flexible plastic cable fixing parts | BL                  | BL | BL | BL              | BL              | BL    | 2024-05-22                              |
| 132        | White plastic shell                       | BL                  | BL | BL | BL              | BL              | BL    | 2024-05-22                              |
| 133        | Silver metal shrapnel                     | BL                  | BL | BL | BL              | /               | /     | 2024-05-22                              |
| 134        | Blue PCB board                            | BL                  | BL | BL | BL              | BL              | BL    | 2024-05-22                              |
| 135        | Silver metal body                         | BL                  | BL | BL | BL              | /               | /     | 2024-05-22                              |
| 136        | Soldering                                 | BL                  | BL | BL | BL              | /               | /     | 2024-05-22                              |
| 137        | White plastic wire skin                   | BL                  | BL | BL | BL              | BL              | BL    | 2024-05-22                              |
| 138        | Gold metal wire                           | BL                  | BL | BL | BL              | /               | /     | 2024-05-22                              |
| 139        | Red enameled wire                         | BL                  | BL | BL | BL              | /               | /     | 2024-05-22                              |
| 140        | Green enameled wire                       | BL                  | BL | BL | BL              | /               | /     | 2024-05-22                              |
| 141        | White plastic shell                       | BL                  | BL | BL | BL              | BL              | BL    | 2024-05-22                              |
| 142        | Silver metal pin                          | BL                  | BL | BL | BL              | /               | /     | 2024-05-22                              |
| 143        | Blue PCB board                            | BL                  | BL | BL | BL              | BL              | BL    | 2024-05-22                              |
| 144        | Black plastic shell                       | BL                  | BL | BL | BL              | BL              | BL    | 2024-05-22                              |
| 145        | Silver metal port                         | BL                  | BL | BL | BL              | /               | /     | 2024-05-22                              |
| 146        | White plastic wire cover (outer)          | BL                  | BL | BL | BL              | BL              | BL    | 2024-05-22                              |



Shenzhen LCS Compliance Testing Laboratory Ltd.

Add: 901, No.40 Building, Xialang Industrial Zone, Heshuikou Community, Matian Street, Guangming District, Shenzhen, Guangdong, China

Tel: +(86) 0755-82591330 | E-mail: webmaster@lcs-cert.com | Web: www.lcs-cert.com

Scan code to check authenticity

Document No:TRF-4-R-027 Ver. A/0



| Sample No. | Sample Description             | Screening Result(s) |    |    |     |      |       | Date of sample submission/ Resubmission |
|------------|--------------------------------|---------------------|----|----|-----|------|-------|---|
|            |                                | Cd                  | Pb | Hg | Cr▼ | Br▼  |       |   |
|            |                                |                     |    |    |     | PBBs | PBDEs |   |
| 147        | White plastic plug housing     | BL                  | BL | BL | BL  | BL   | BL    | 2024-05-22                              |
| 148        | Silver metal plug housing      | BL                  | BL | BL | BL  | /    | /     | 2024-05-22                              |
| 149        | Green plastic wire skin        | BL                  | BL | BL | BL  | BL   | BL    | 2024-05-22                              |
| 150        | White plastic wire skin        | BL                  | BL | BL | BL  | BL   | BL    | 2024-05-22                              |
| 151        | Red plastic wire skin          | BL                  | BL | BL | BL  | BL   | BL    | 2024-05-22                              |
| 152        | Black plastic wire leather     | BL                  | BL | BL | BL  | BL   | BL    | 2024-05-22                              |
| 153        | Copper colored metal wire core | BL                  | BL | BL | BL  | /    | /     | 2024-05-22                              |

Note:

- Results were obtained by XRF for primary screening, and further chemical testing by ICP(for Cd, Pb, Hg), UV-Vis(for Cr(VI)) and GC-MS(for PBBs, PBDEs) are recommended to be performed, if the concentration exceeds the below warning value according to IEC 62321-3-1:2013(Unit: mg/kg).

| Element | Polymers   | Metals   | Composite material                                   |
|---------|--|--|--|
| Cd      | $BL \leq (70-3\sigma) < X < (130+3\sigma) \leq OL$   | $BL \leq (70-3\sigma) < X < (130+3\sigma) \leq OL$   | $LOD < X < (150+3\sigma) \leq OL$                    |
| Pb      | $BL \leq (700-3\sigma) < X < (1300+3\sigma) \leq OL$ | $BL \leq (700-3\sigma) < X < (1300+3\sigma) \leq OL$ | $BL \leq (500-3\sigma) < X < (1500+3\sigma) \leq OL$ |
| Hg      | $BL \leq (700-3\sigma) < X < (1300+3\sigma) \leq OL$ | $BL \leq (700-3\sigma) < X < (1300+3\sigma) \leq OL$ | $BL \leq (500-3\sigma) < X < (1500+3\sigma) \leq OL$ |
| Cr      | $BL \leq (700-3\sigma) < X$                          | $BL \leq (700-3\sigma) < X$                          | $BL \leq (500-3\sigma) < X$                          |
| Br      | $BL \leq (300-3\sigma) < X$                          | N/A  | $BL \leq (250-3\sigma) < X$                          |

Remark:

- BL= Below Limit
  - OL= Over Limit
  - X= The range of needing to do further testing
  - 3σ= The reproducibility of analytical instruments
  - N/A= Not applicable
  - LOD= Detection limit
- The XRF screening test for RoHS elements – The reading may be different to the actual content in the sample be of non-uniformity composition.
  - The maximum permissible limit is quoted from the document RoHS Directive 2011/65/EU with amendment (EU) 2015/863.
  - ▼=For restricted substances PBBs and PBDEs, the results show the total Br content, the restricted substance was Cr(VI), and the results showed the total Cr content.





| RoHS Restricted Substances           | Maximum Concentration Value (mg/kg)<br>(by weight in homogenous materials) |
|--------------------------------------|--|
| Cadmium(Cd)                          | 100  |
| Lead(Pb)                             | 1000   |
| Mercury(Hg)                          | 1000   |
| Hexavalent Chromium(Cr(VI))          | 1000   |
| Polybrominated biphenyls(PBBs)       | 1000   |
| Polybrominated diphenylethers(PBDEs) | 1000   |
| Dibutyl Phthalate(DBP)               | 1000   |
| Butylbenzyl Phthalate(BBP)           | 1000   |
| Di-(2-ethylhexyl) Phthalate(DEHP)    | 1000   |
| Diisobutyl phthalate(DIBP)           | 1000   |

Disclaimers:

This XRF Screening report is for reference purposes only. The applicant shall make its/his/her own judgment as to whether the information provided in this XRF screening report is sufficient for its/his/her purposes. The result shown in this XRF screening report will differ based on various factors, including but not limited to, the sample size, thickness, area, surface flatness, equipment parameters and matrix effect (e.g. plastic, rubber, metal, glass, ceramic etc.). Further wet chemical pre-treatment with relevant chemical equipment analysis are required to obtain quantitative data.





**B. EU RoHS Directive 2011/65/EU with amendment (EU) 2015/863 on DBP, BBP, DEHP & DIBP content**

Test method:

Phthalates(DBP, BBP, DEHP &amp;DIBP) Content:

Refer to IEC 62321-8:2017, by solvent extraction and analysis was performed by gas chromatography-mass spectrometer (GC-MS).

Test result(s):

**1) Phthalates(DBP, BBP, DEHP &DIBP)**

| Tested Item(s)                            | MDL (mg/kg) | Test Result(s) (mg/kg) |       | Limit (mg/kg) |
|---|-------------|------------------------|-------|---------------|
|   |             | (146)                  | (147) |               |
| Dibutyl Phthalate(DBP) Content            | 50          | N.D.                   | N.D.  | 1000          |
| Butylbenzyl Phthalate(BBP) Content        | 50          | N.D.                   | N.D.  | 1000          |
| Di-(2-ethylhexyl) Phthalate(DEHP) Content | 50          | N.D.                   | N.D.  | 1000          |
| Diisobutyl phthalate(DIBP) Content        | 50          | N.D.                   | N.D.  | 1000          |

| Tested Item(s)                            | MDL (mg/kg) | Test Result(s) (mg/kg) | Limit (mg/kg) |
|---|-------------|------------------------|---------------|
|   |             | (9+10+11+12+13+14)     |               |
| Dibutyl Phthalate(DBP) Content            | 50          | N.D.                   | 1000          |
| Butylbenzyl Phthalate(BBP) Content        | 50          | N.D.                   | 1000          |
| Di-(2-ethylhexyl) Phthalate(DEHP) Content | 50          | N.D.                   | 1000          |
| Diisobutyl phthalate(DIBP) Content        | 50          | N.D.                   | 1000          |

| Tested Item(s)                            | MDL (mg/kg) | Test Result(s) (mg/kg) | Limit (mg/kg) |
|---|-------------|------------------------|---------------|
|   |             | (1+2+3+5+6+8)          |               |
| Dibutyl Phthalate(DBP) Content            | 50          | N.D.                   | 1000          |
| Butylbenzyl Phthalate(BBP) Content        | 50          | N.D.                   | 1000          |
| Di-(2-ethylhexyl) Phthalate(DEHP) Content | 50          | N.D.                   | 1000          |
| Diisobutyl phthalate(DIBP) Content        | 50          | N.D.                   | 1000          |





| Tested Item(s)                            | MDL<br>(mg/kg) | Test Result(s)<br>(mg/kg) | Limit<br>(mg/kg) |
|---|----------------|---------------------------|------------------|
|   |                | (15+16+17+18+19+20)       |                  |
| Dibutyl Phthalate(DBP) Content            | 50             | N.D.                      | 1000             |
| Butylbenzyl Phthalate(BBP) Content        | 50             | N.D.                      | 1000             |
| Di-(2-ethylhexyl) Phthalate(DEHP) Content | 50             | N.D.                      | 1000             |
| Diisobutyl phthalate(DIBP) Content        | 50             | N.D.                      | 1000             |

| Tested Item(s)                            | MDL<br>(mg/kg) | Test Result(s)<br>(mg/kg) | Limit<br>(mg/kg) |
|---|----------------|---------------------------|------------------|
|   |                | (23+24+25+27+28+29)       |                  |
| Dibutyl Phthalate(DBP) Content            | 50             | N.D.                      | 1000             |
| Butylbenzyl Phthalate(BBP) Content        | 50             | N.D.                      | 1000             |
| Di-(2-ethylhexyl) Phthalate(DEHP) Content | 50             | N.D.                      | 1000             |
| Diisobutyl phthalate(DIBP) Content        | 50             | N.D.                      | 1000             |

| Tested Item(s)                            | MDL<br>(mg/kg) | Test Result(s)<br>(mg/kg) | Limit<br>(mg/kg) |
|---|----------------|---------------------------|------------------|
|   |                | (30+31+32+33+34+37)       |                  |
| Dibutyl Phthalate(DBP) Content            | 50             | N.D.                      | 1000             |
| Butylbenzyl Phthalate(BBP) Content        | 50             | N.D.                      | 1000             |
| Di-(2-ethylhexyl) Phthalate(DEHP) Content | 50             | N.D.                      | 1000             |
| Diisobutyl phthalate(DIBP) Content        | 50             | N.D.                      | 1000             |

| Tested Item(s)                            | MDL<br>(mg/kg) | Test Result(s)<br>(mg/kg) | Limit<br>(mg/kg) |
|---|----------------|---------------------------|------------------|
|   |                | (42+44+47+49+54+55)       |                  |
| Dibutyl Phthalate(DBP) Content            | 50             | N.D.                      | 1000             |
| Butylbenzyl Phthalate(BBP) Content        | 50             | N.D.                      | 1000             |
| Di-(2-ethylhexyl) Phthalate(DEHP) Content | 50             | N.D.                      | 1000             |
| Diisobutyl phthalate(DIBP) Content        | 50             | N.D.                      | 1000             |





| Tested Item(s)                            | MDL<br>(mg/kg) | Test Result(s)<br>(mg/kg) | Limit<br>(mg/kg) |
|---|----------------|---------------------------|------------------|
|   |                | (59+60+65+69+70+71)       |                  |
| Dibutyl Phthalate(DBP) Content            | 50             | N.D.                      | 1000             |
| Butylbenzyl Phthalate(BBP) Content        | 50             | N.D.                      | 1000             |
| Di-(2-ethylhexyl) Phthalate(DEHP) Content | 50             | N.D.                      | 1000             |
| Diisobutyl phthalate(DIBP) Content        | 50             | N.D.                      | 1000             |

| Tested Item(s)                            | MDL<br>(mg/kg) | Test Result(s)<br>(mg/kg) | Limit<br>(mg/kg) |
|---|----------------|---------------------------|------------------|
|   |                | (72+73+74+75+76+77)       |                  |
| Dibutyl Phthalate(DBP) Content            | 50             | N.D.                      | 1000             |
| Butylbenzyl Phthalate(BBP) Content        | 50             | N.D.                      | 1000             |
| Di-(2-ethylhexyl) Phthalate(DEHP) Content | 50             | N.D.                      | 1000             |
| Diisobutyl phthalate(DIBP) Content        | 50             | N.D.                      | 1000             |

| Tested Item(s)                            | MDL<br>(mg/kg) | Test Result(s)<br>(mg/kg) | Limit<br>(mg/kg) |
|---|----------------|---------------------------|------------------|
|   |                | (78+79+80+82+83+85)       |                  |
| Dibutyl Phthalate(DBP) Content            | 50             | N.D.                      | 1000             |
| Butylbenzyl Phthalate(BBP) Content        | 50             | N.D.                      | 1000             |
| Di-(2-ethylhexyl) Phthalate(DEHP) Content | 50             | N.D.                      | 1000             |
| Diisobutyl phthalate(DIBP) Content        | 50             | N.D.                      | 1000             |

| Tested Item(s)                            | MDL<br>(mg/kg) | Test Result(s)<br>(mg/kg) | Limit<br>(mg/kg) |
|---|----------------|---------------------------|------------------|
|   |                | (88+89+90+91+93+96)       |                  |
| Dibutyl Phthalate(DBP) Content            | 50             | N.D.                      | 1000             |
| Butylbenzyl Phthalate(BBP) Content        | 50             | N.D.                      | 1000             |
| Di-(2-ethylhexyl) Phthalate(DEHP) Content | 50             | N.D.                      | 1000             |
| Diisobutyl phthalate(DIBP) Content        | 50             | N.D.                      | 1000             |





| Tested Item(s)                            | MDL<br>(mg/kg) | Test Result(s)<br>(mg/kg) | Limit<br>(mg/kg) |
|---|----------------|---------------------------|------------------|
|   |                | (97+98+99+100+103+104)    |                  |
| Dibutyl Phthalate(DBP) Content            | 50             | N.D.                      | 1000             |
| Butylbenzyl Phthalate(BBP) Content        | 50             | N.D.                      | 1000             |
| Di-(2-ethylhexyl) Phthalate(DEHP) Content | 50             | N.D.                      | 1000             |
| Diisobutyl phthalate(DIBP) Content        | 50             | N.D.                      | 1000             |

| Tested Item(s)                            | MDL<br>(mg/kg) | Test Result(s)<br>(mg/kg) | Limit<br>(mg/kg) |
|---|----------------|---------------------------|------------------|
|   |                | (105+106+107+108+109+110) |                  |
| Dibutyl Phthalate(DBP) Content            | 50             | N.D.                      | 1000             |
| Butylbenzyl Phthalate(BBP) Content        | 50             | N.D.                      | 1000             |
| Di-(2-ethylhexyl) Phthalate(DEHP) Content | 50             | N.D.                      | 1000             |
| Diisobutyl phthalate(DIBP) Content        | 50             | N.D.                      | 1000             |

| Tested Item(s)                            | MDL<br>(mg/kg) | Test Result(s)<br>(mg/kg) | Limit<br>(mg/kg) |
|---|----------------|---------------------------|------------------|
|   |                | (115+118+119+121+122+124) |                  |
| Dibutyl Phthalate(DBP) Content            | 50             | N.D.                      | 1000             |
| Butylbenzyl Phthalate(BBP) Content        | 50             | N.D.                      | 1000             |
| Di-(2-ethylhexyl) Phthalate(DEHP) Content | 50             | N.D.                      | 1000             |
| Diisobutyl phthalate(DIBP) Content        | 50             | N.D.                      | 1000             |

| Tested Item(s)                            | MDL<br>(mg/kg) | Test Result(s)<br>(mg/kg) | Limit<br>(mg/kg) |
|---|----------------|---------------------------|------------------|
|   |                | (125+126+127+128+130+131) |                  |
| Dibutyl Phthalate(DBP) Content            | 50             | N.D.                      | 1000             |
| Butylbenzyl Phthalate(BBP) Content        | 50             | N.D.                      | 1000             |
| Di-(2-ethylhexyl) Phthalate(DEHP) Content | 50             | N.D.                      | 1000             |
| Diisobutyl phthalate(DIBP) Content        | 50             | N.D.                      | 1000             |





| Tested Item(s)                            | MDL<br>(mg/kg) | Test Result(s)<br>(mg/kg) | Limit<br>(mg/kg) |
|---|----------------|---------------------------|------------------|
|   |                | (132+134+137+141+143+144) |                  |
| Dibutyl Phthalate(DBP) Content            | 50             | N.D.                      | 1000             |
| Butylbenzyl Phthalate(BBP) Content        | 50             | N.D.                      | 1000             |
| Di-(2-ethylhexyl) Phthalate(DEHP) Content | 50             | N.D.                      | 1000             |
| Diisobutyl phthalate(DIBP) Content        | 50             | N.D.                      | 1000             |

| Tested Item(s)                            | MDL<br>(mg/kg) | Test Result(s)<br>(mg/kg) | Limit<br>(mg/kg) |
|---|----------------|---------------------------|------------------|
|   |                | (149+150+151+152)         |                  |
| Dibutyl Phthalate(DBP) Content            | 50             | N.D.                      | 1000             |
| Butylbenzyl Phthalate(BBP) Content        | 50             | N.D.                      | 1000             |
| Di-(2-ethylhexyl) Phthalate(DEHP) Content | 50             | N.D.                      | 1000             |
| Diisobutyl phthalate(DIBP) Content        | 50             | N.D.                      | 1000             |

## Note:

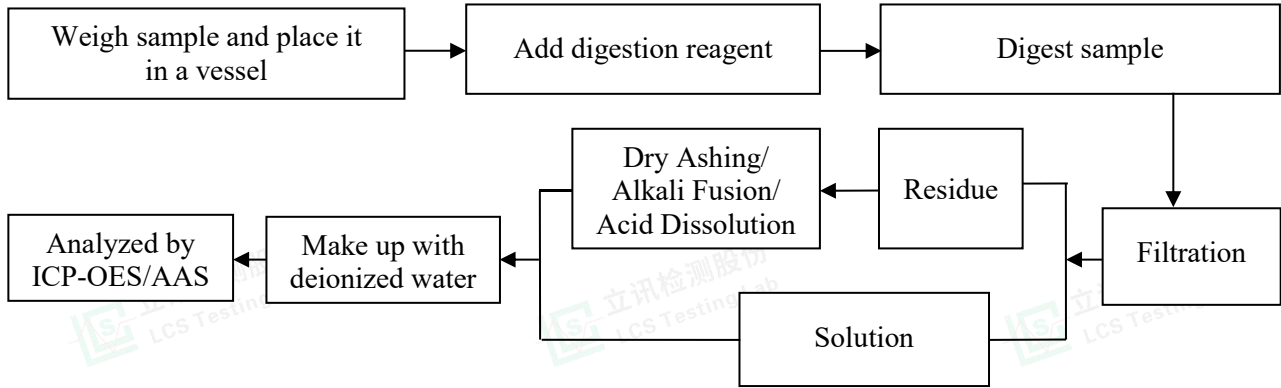
- MDL = Method Detection Limit
- N.D. = Not Detected (<MDL)
- mg/kg= milligram per kilogram=ppm
- According to customer's requirement, only the appointed materials have been tested.



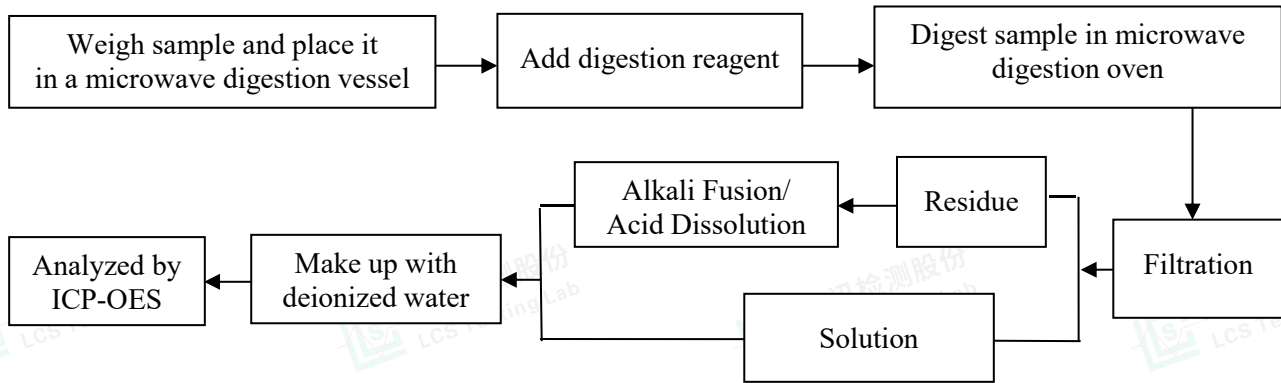


### Test Process

#### 1. Lead(Pb) & Cadmium(Cd): IEC 62321-5:2013

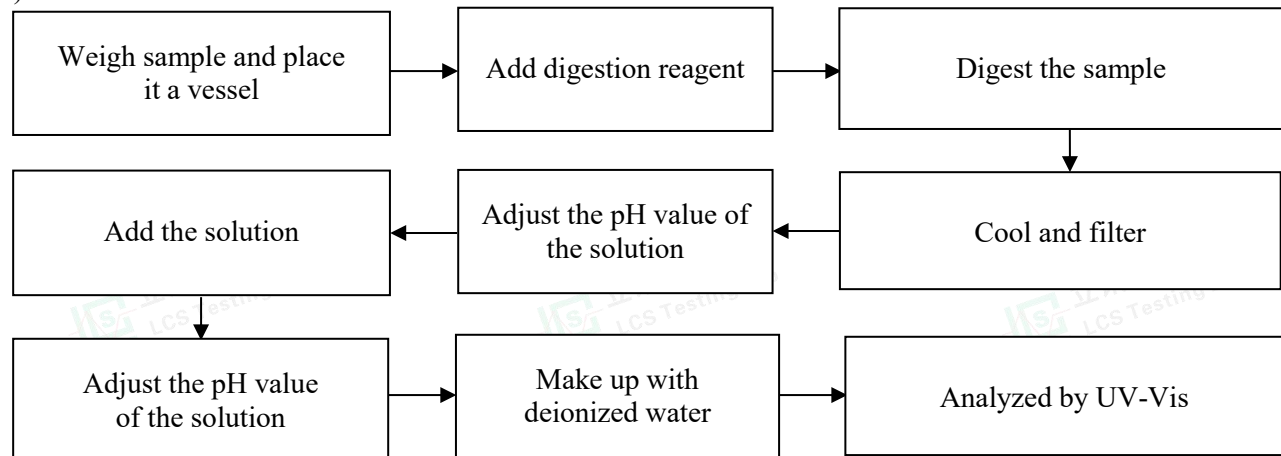


#### 2. Mercury(Hg): IEC 62321-4:2013+AMD1:2017 CSV



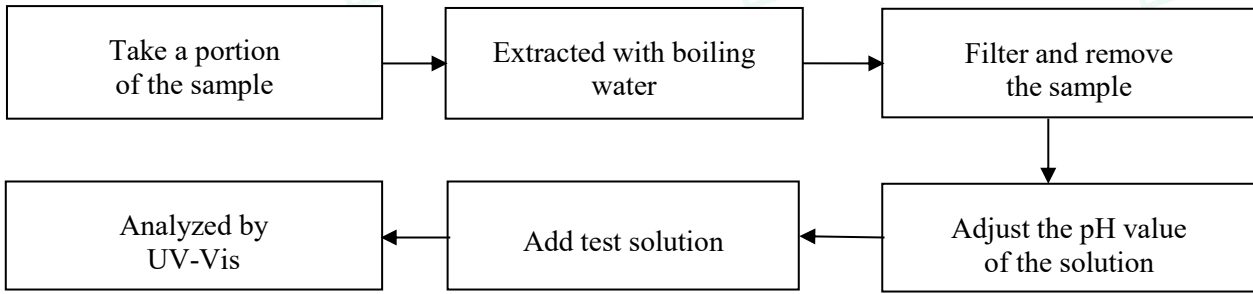
#### 3. Hexavalent Chromium(Cr(VI))

##### 1) IEC 62321-7-2:2017

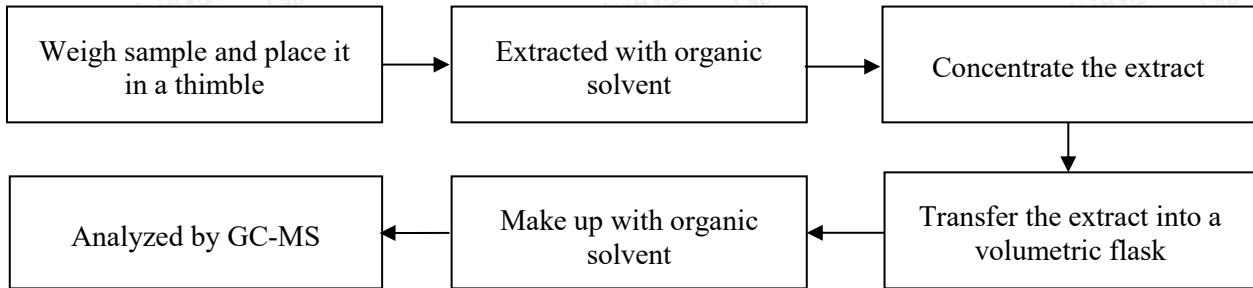




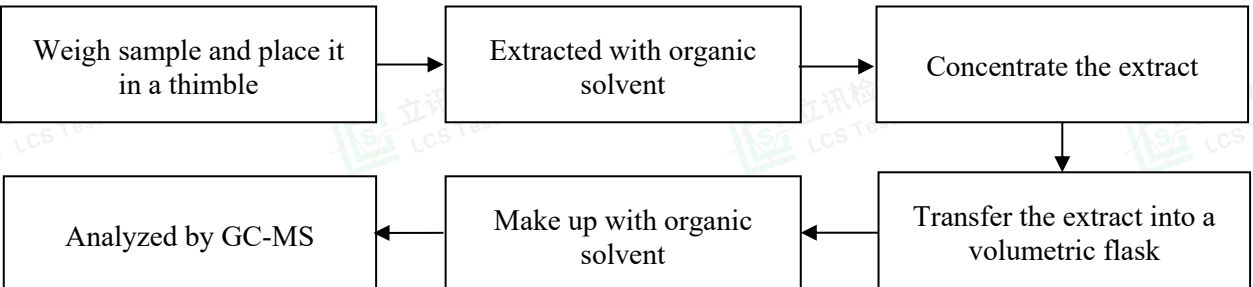
2) IEC 62321-7-1:2015



4. Polybrominated Biphenyls(PBBs) & Polybrominated Diphenyl Ethers(PBDEs) : IEC 62321-6:2015



5. Phthalates(DBP, BBP, DEHP & DIBP) : IEC 62321-8:2017

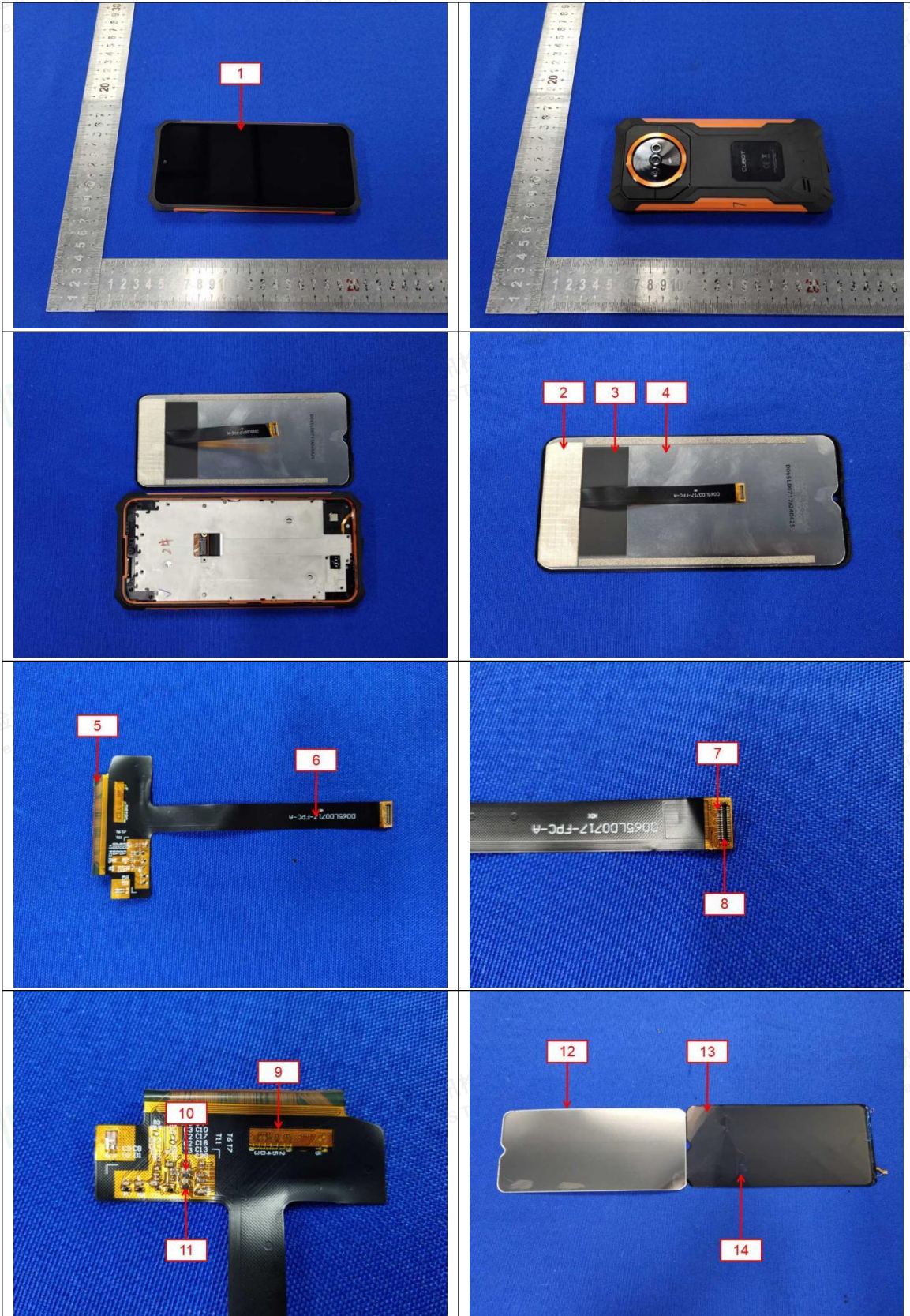


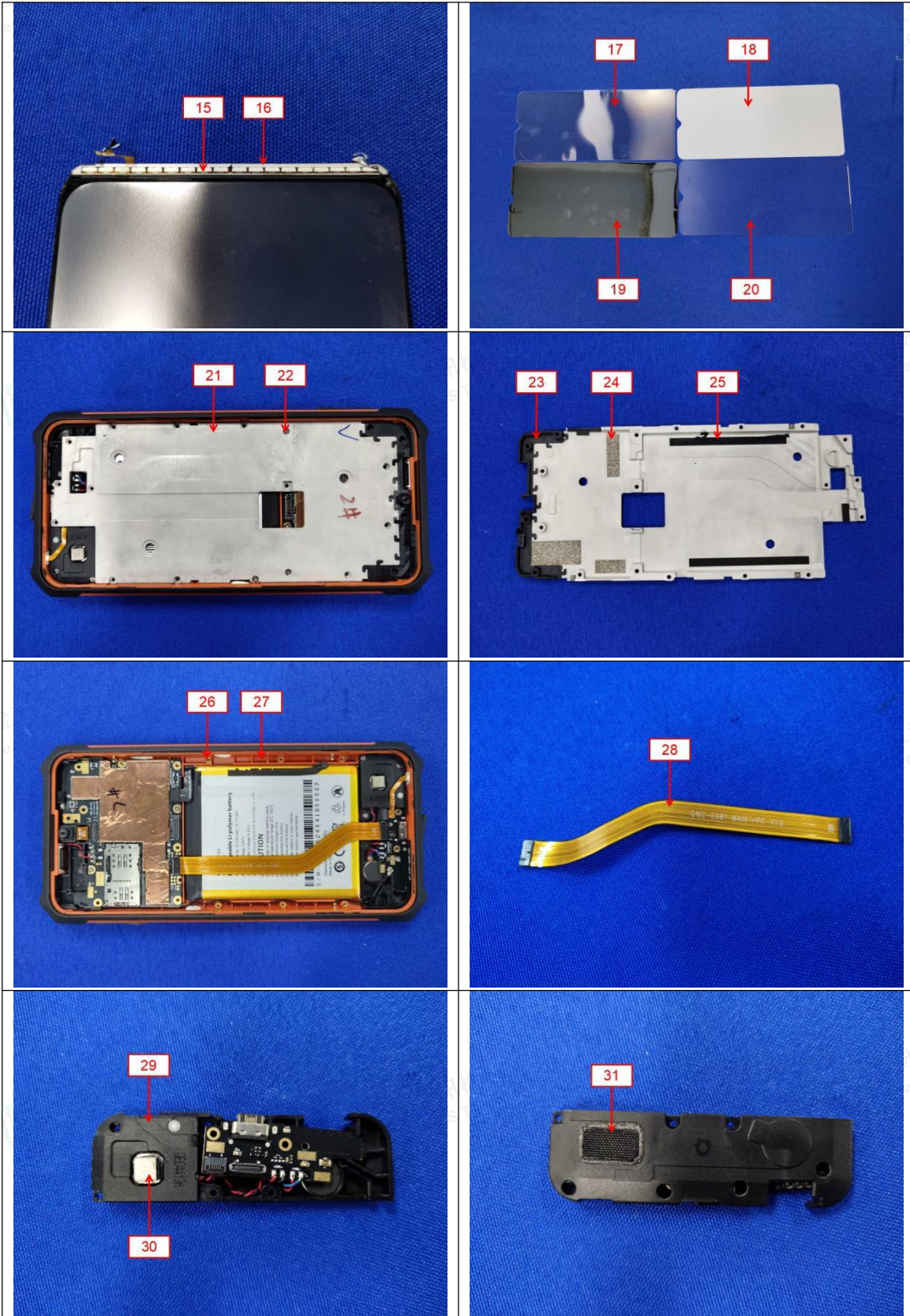


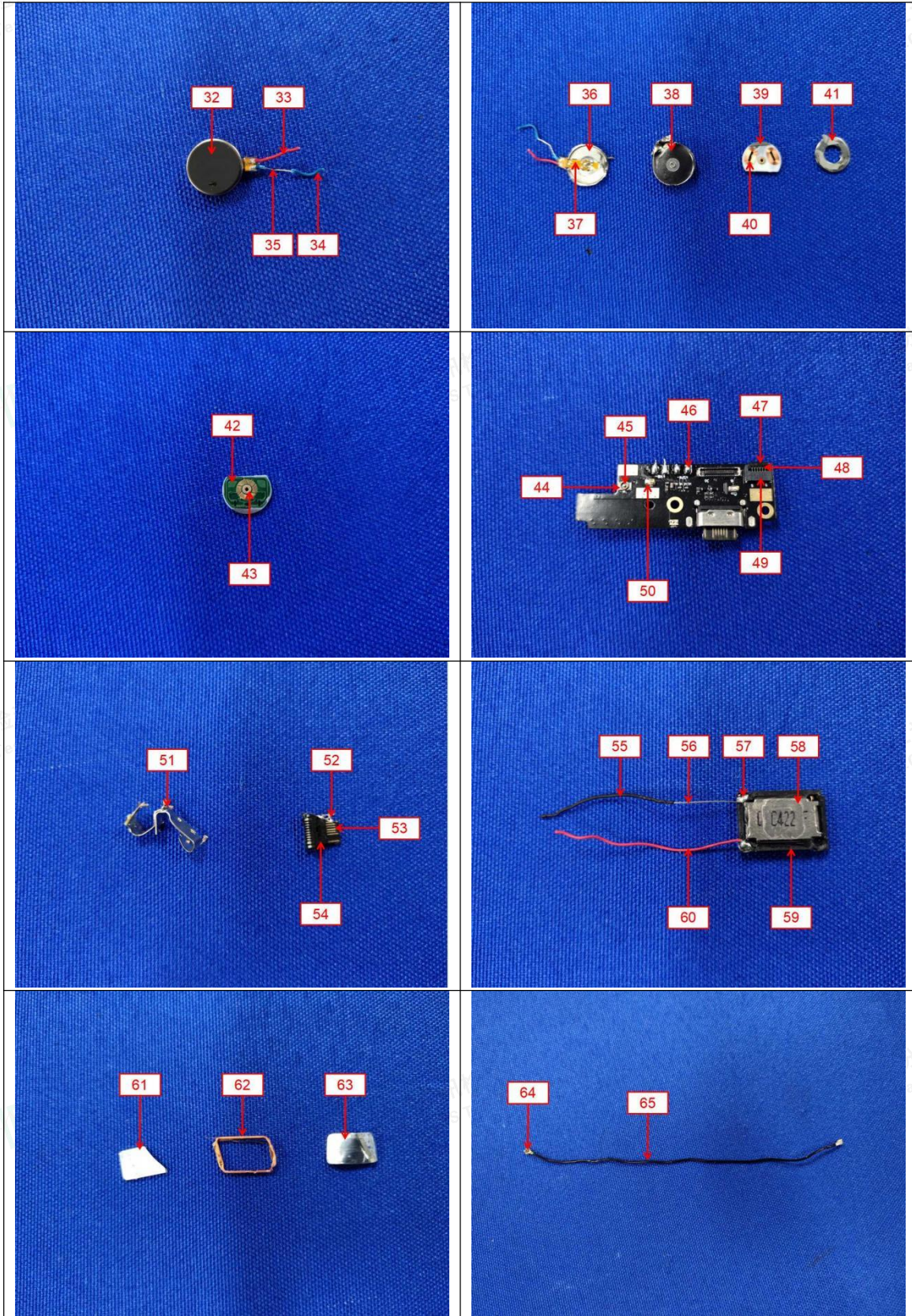
### The photo(s) of the sample

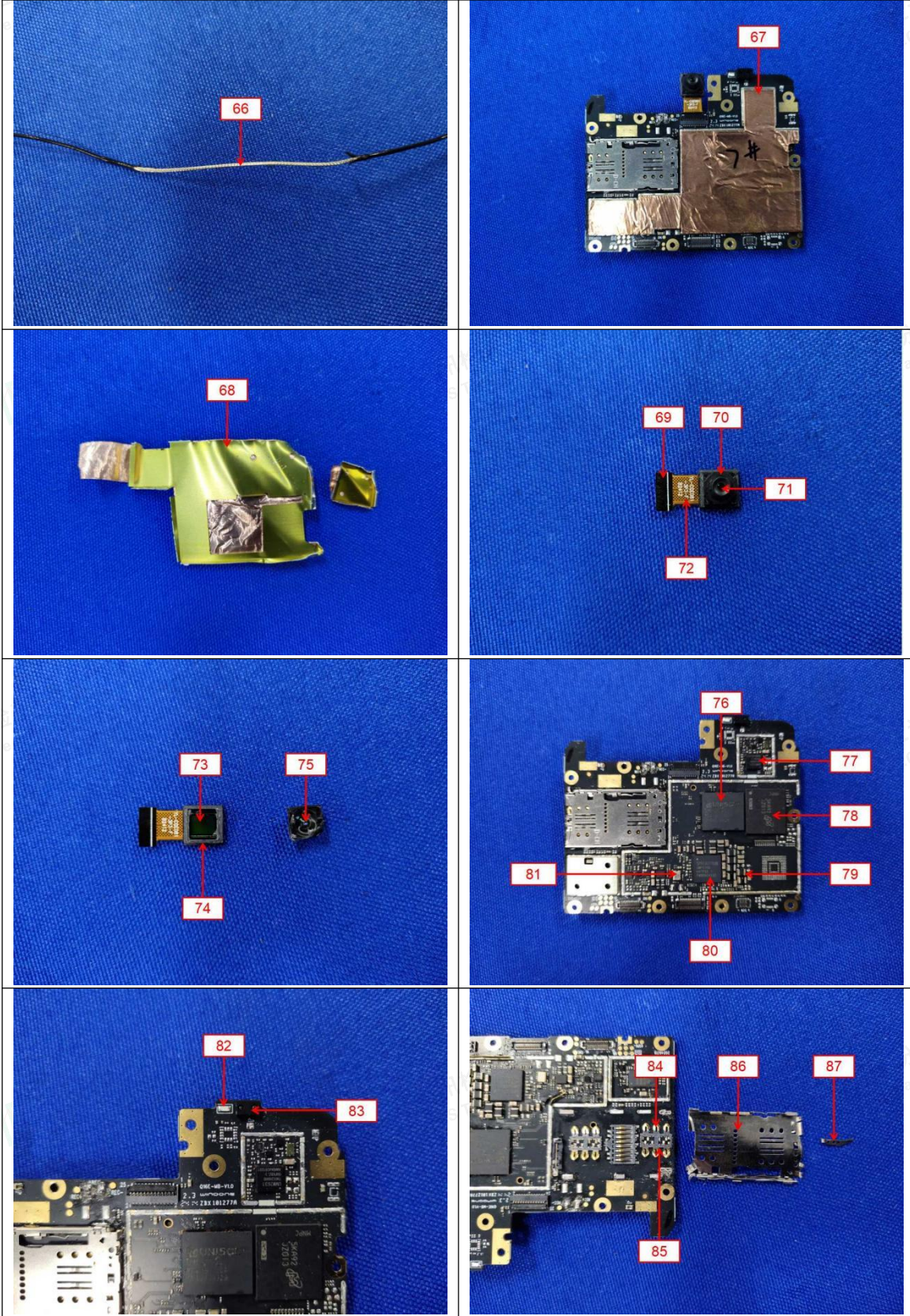


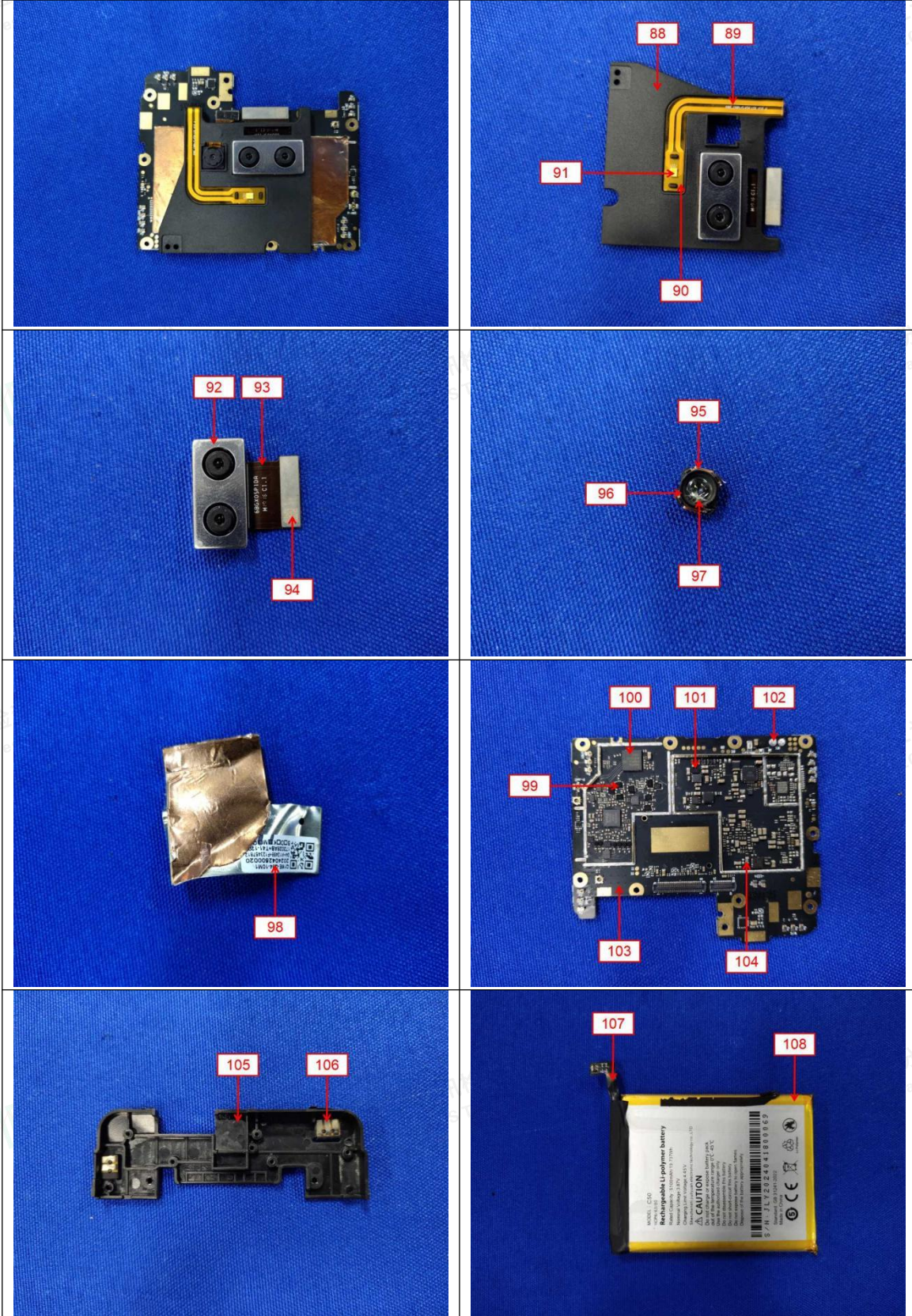


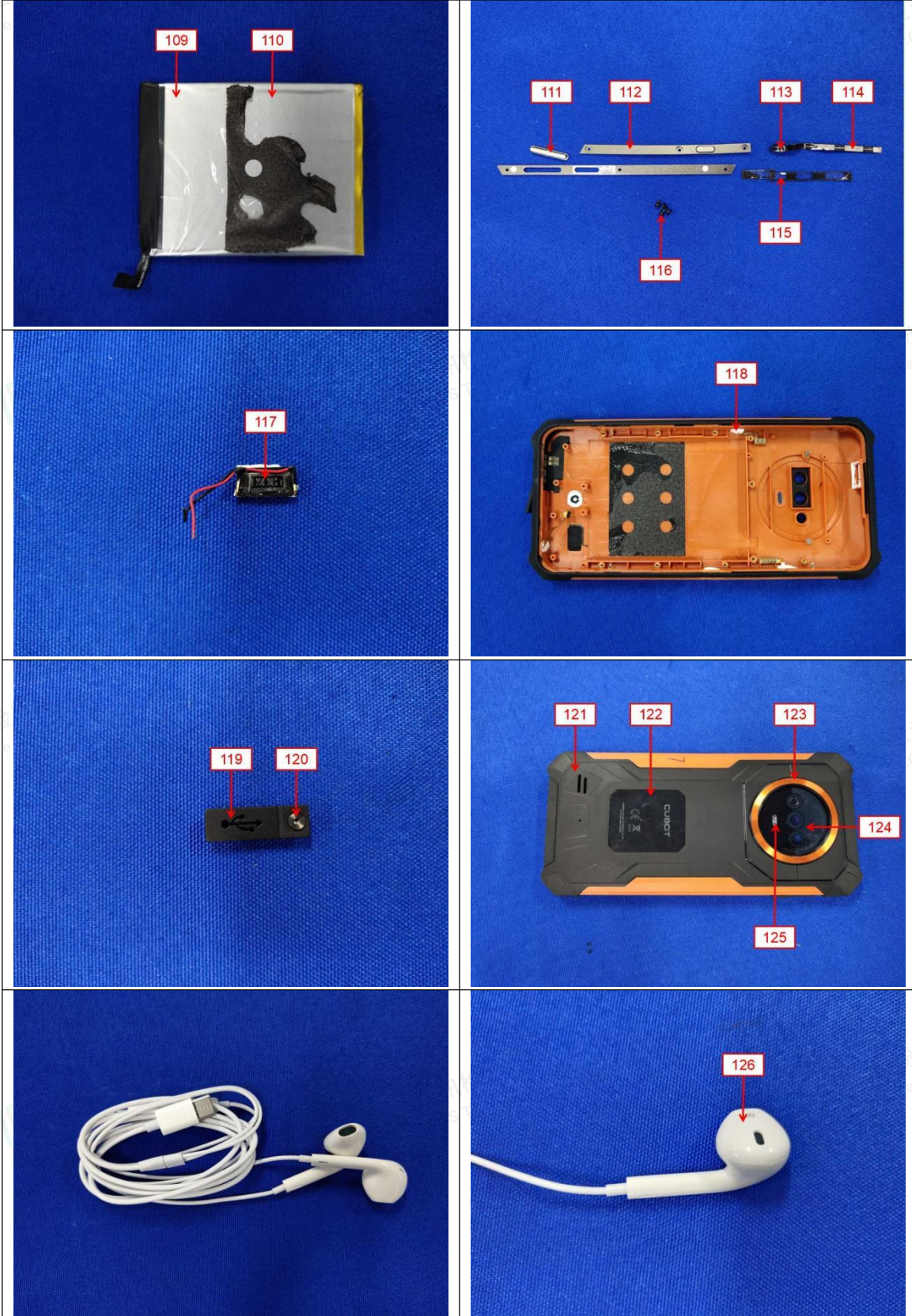


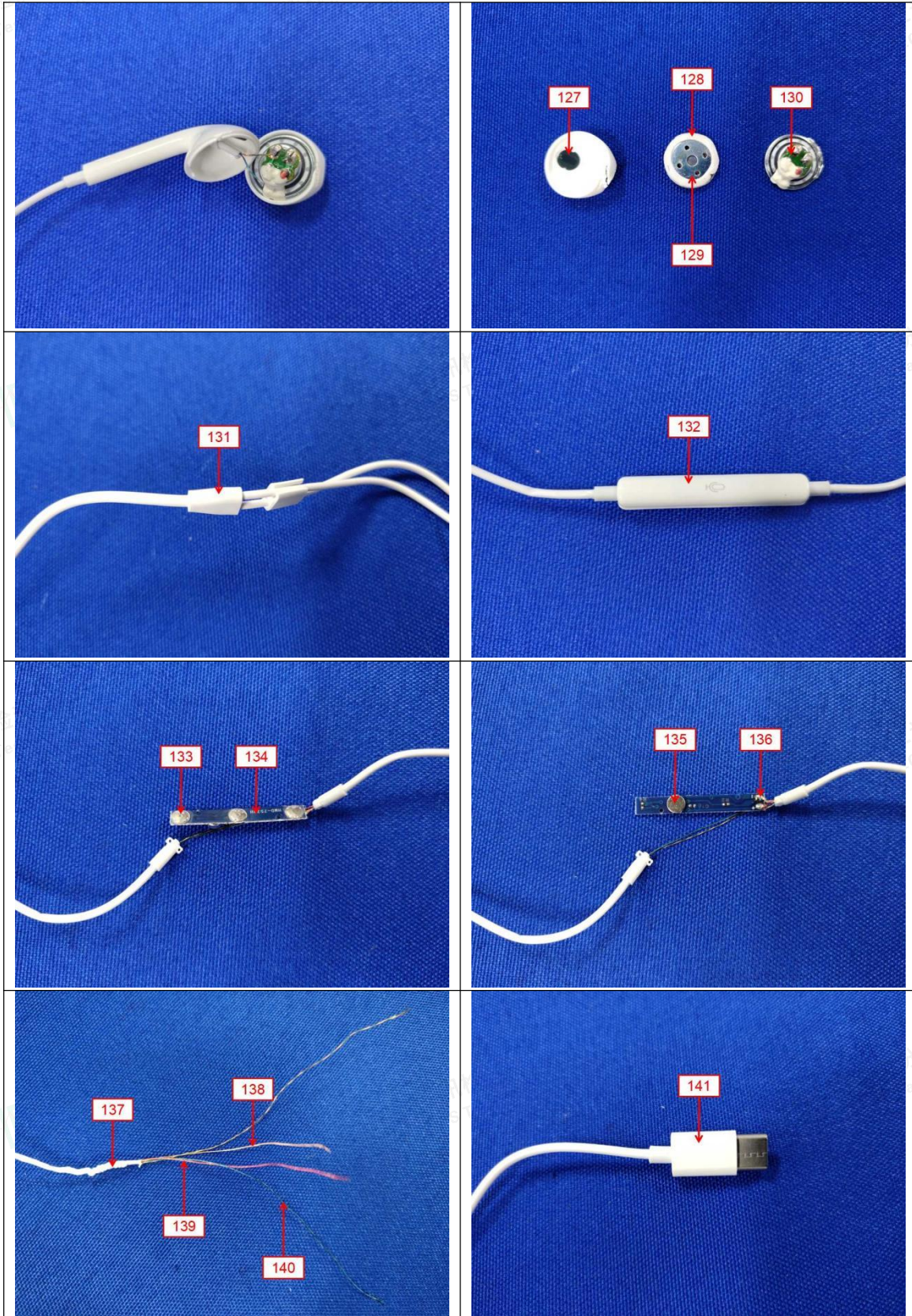


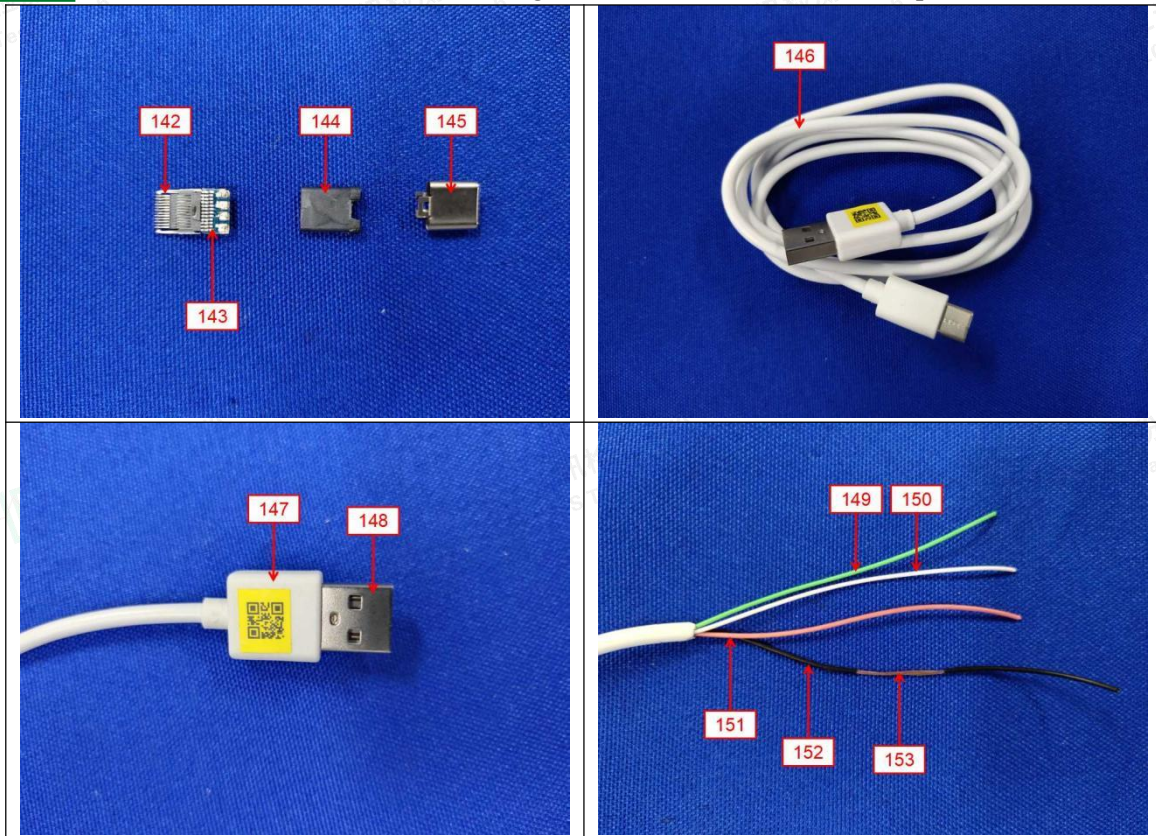












**Statement:**

1. The test report is invalid without the signature of the approver and the special seal for the company's report;
2. The company name, address and sample information shown on the report were provided by the applicant who should be responsible for the authenticity which are not verified by LCS;
3. The test results in this report are only responsible for the tested samples;
4. Without written approval of LCS, this report can't be reproduced except in full;
5. In case of any discrepancy between the corresponding Chinese and English contents in the test report, the Chinese version shall prevail.

\*\*\* End of Report \*\*\*

